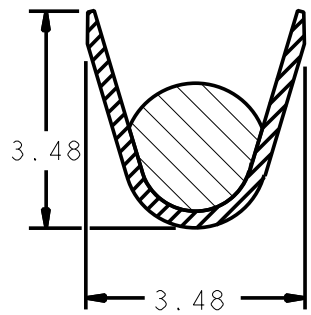
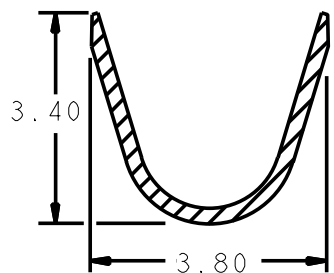
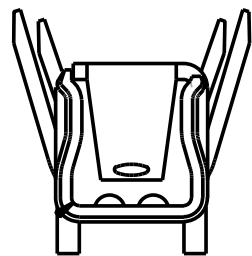


SECTION C-C

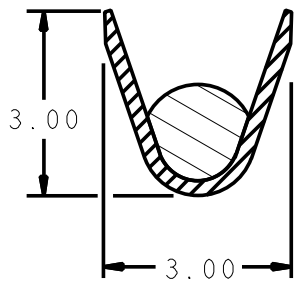


SECTION D-D

P/N 4250000873

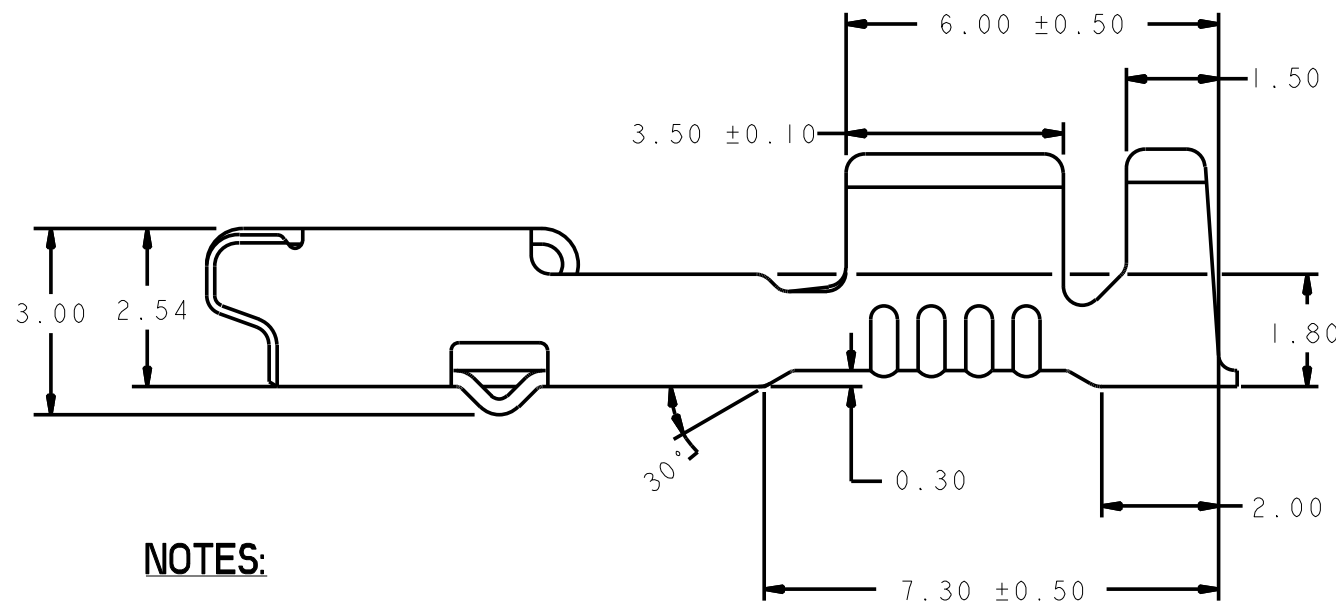
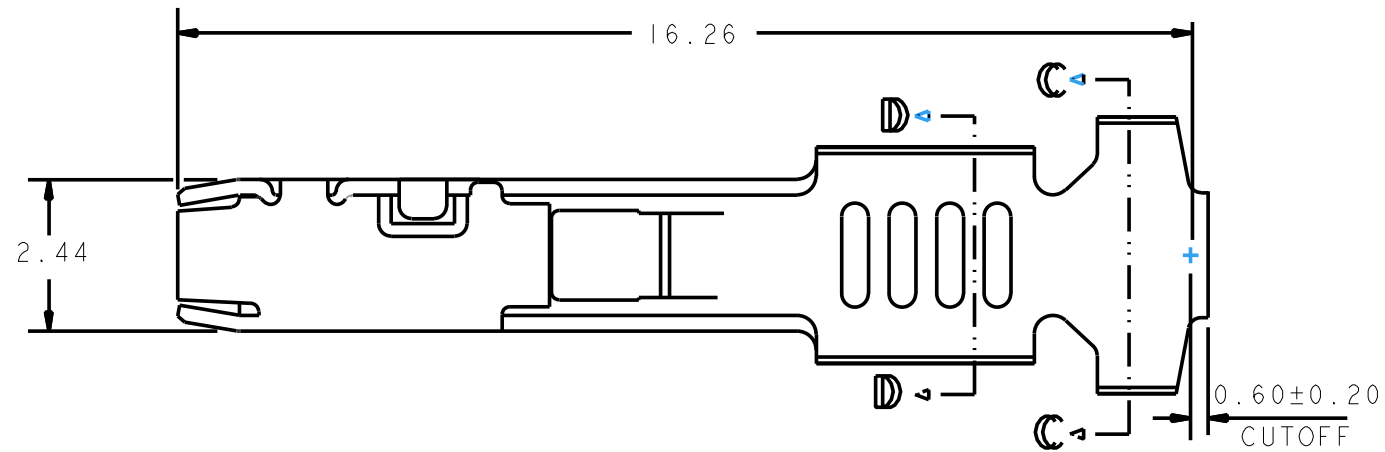


SECTION C-C



SECTION D-D

P/N 4250000872



NOTES:

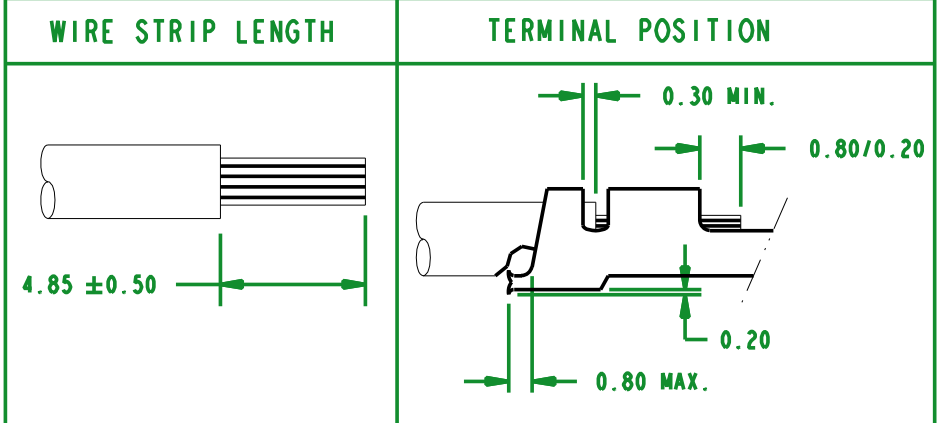
1. TERMINAL MATERIAL: HIGH PERFORMANCE COPPER BASED ALLOY.
2. TERMINAL PRE-PLATED 1.0 MIN MICRON THICKNESS 100% TIN (Sn) OVERALL.
3. TERMINALS SUPPLIED 3,500 EA. PER REEL.
4. TOLERANCES UNLESS OTHERWISE NOTED:
X.X ± 0.5
X.XX ± 0.30
5. ALL DIMENSIONS IN MM UNLESS OTHERWISE SPECIFIED.

DRAWING REVISIONS

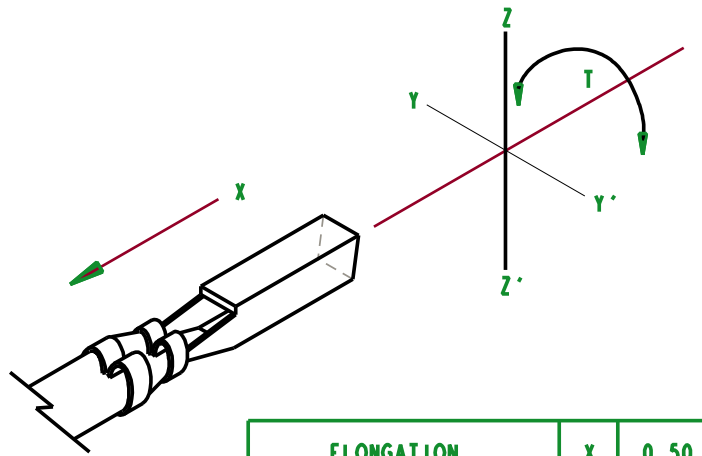
REV	DOCUMENT	APP	DATE
A	PRODUCTION RELEASE ECN #99-1161	RWB	11/99
B	SHEET 1 1.0 MICRON WAS 2.0 MICRON 3.500 WAS 7.00 PER REEL ADD NOTE 4 SHEET 2 UPDATE CRIMP SPEC ECN #00E068	JOD	01/01
C	REVISED PER ECN #01A460	JOD	04/20/01
D	REVISED PER ECN #02A617	AC	08/12/02
E	REM: 18 AWG TXL PER ECN #02A722	AC	09/19/02
F	ADD: 18 AWG TXL PER ECN #03A448	AC	03/03/03
G	ADD: 16 STRAND 18 AWG TXL/GXL PER ECN #03A448	AC	04/23/03
H	ADD: NOTE 5 PER ECN #03A831		

UNITS ENGLISH				PRO/E		Cinch		MODELED BY: NAME	
DO NOT SCALE DRAWING		DRAWN BY R. BYCZEK		DATE 12/21/99		TITLE FEMALE TERMINAL BIR 16/20 AWG UNIVERSAL		1700 FINLEY RD LOMBARD, IL. 60148	
UNLESS OTHERWISE SPECIFIED: ALL DIMENSIONS ARE IN INCHES		DESIGN ENGINEER R. BYCZEK		12/21/99		MATERIAL SEE NOTES		CONTROL SPEC NUMBER -	
FILLET/RADII .02 MAX		DESIGN ENGINEERING MGR. R. BYCZEK		05/09/00		MATERIAL SPEC NUMBER -		FINISH SEE NOTES	
TOLERANCES AND LIMITS APPLY OVER ADDITIVE FINISH		MFG. ENGINEERING P. WALTHALL		05/09/00		CAD FILE NUMBER 4250000872S		DRAWING NUMBER 425 00 00 872S	
THIS DOCUMENT IS THE PROPERTY OF CINCH. NEITHER THIS DOCUMENT NOR ANY OF THE INFORMATION CONTAINED IN IT MAY BE DUPLICATED OR DISCLOSED WITHOUT PRIOR WRITTEN CONSENT OF CINCH.		QUALITY ASSURANCE T. SHAH		05/09/00		CAGE IDENT NO. SIZE 71785 B		SCALE 1:1	
						SHEET 1 OF 2			

STRIP AND CRIMP SPECIFICATIONS

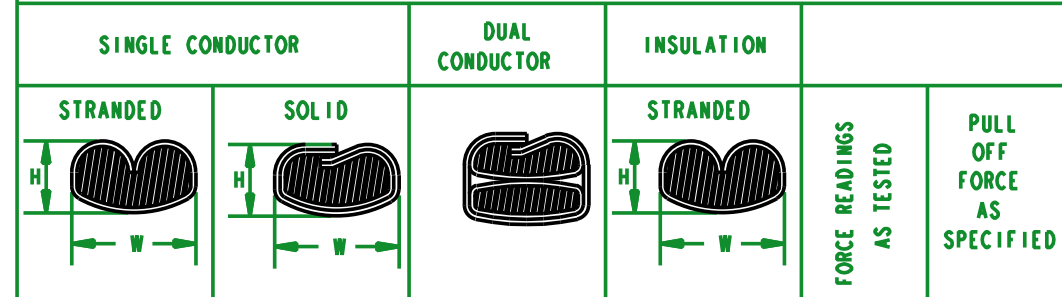


DIMENSIONS AFTER CRIMPING



ELONGATION	X	0.50 MAX.
DEFORMATION	Y	3° MAX.
DEFORMATION	Y'	3° MAX.
FLEX	Z	2° MAX.
FLEX	Z'	3° MAX.
TORSION	T	3° MAX.

CRIMP DIMENSIONS

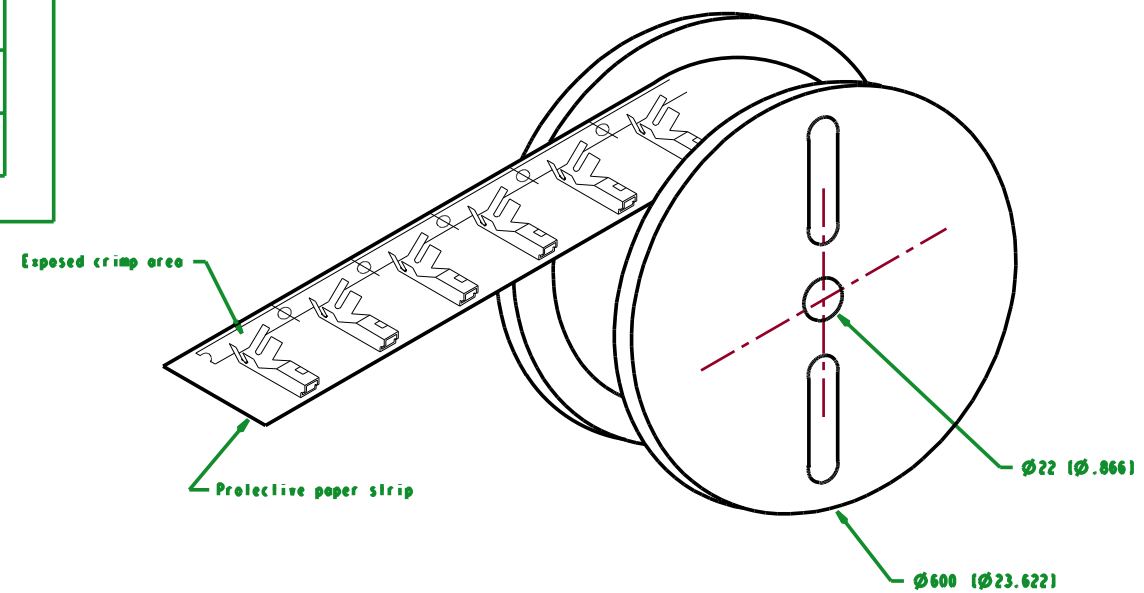


WIRE

WIRE TYPE			INSULATION			TERMINAL PART NUMBER	SINGLE CONDUCTOR		DUAL CONDUCTOR		INSULATION		FORCE READINGS AS TESTED		PULL OFF FORCE AS SPECIFIED	
mm ²	AWG	NUMBER OF STRANDS	TYPE	MAX. DIA.	MIN. DIA.		H	W	H	W	H	L	H	W		AVG.
.5	20	7	GXL	2.11 (.083)	2.03 (.080)	425 00 00 872	1.10	2.04				2.50	2.58	37	36	14.8
.5	20	19	GXL	2.34 (.092)	2.18 (.086)	425 00 00 872	1.10	2.04				2.40	2.55			
.8	18	19	TXL	2.12 (.083)	1.96 (.077)	425 00 00 872	1.20	2.05				2.45	2.55			
.8	18	19	GXL	2.42 (.095)	2.26 (.089)	425 00 00 873	1.20	2.23				2.55	2.82	49	47	19.8
.8	18	16	TXL	2.12 (.083)	1.96 (.077)	425 00 00 872	1.18	2.05				2.35	2.50			
.8	18	16	GXL	2.42 (.095)	2.26 (.089)	425 00 00 873	1.18	2.23				2.45	2.80	43	37	19.8
1.0	16	19	TXL	2.25 (.089)	2.09 (.082)	425 00 00 873	1.30	2.26				2.55	2.88			
1.0	16	19	GXL	2.64 (.104)	2.48 (.098)	425 00 00 873	1.30	2.26				2.58	2.88	62	58	27.0
⑤ 2.0	14	19	TXL	2.66 (.105)	2.50 (.098)	425 00 00 873	1.58	2.29				2.60	2.94			62

NOTES:

- ALL DIMENSIONS IN MILLIMETERS, EXCEPT WHEN SHOWN IN PARENTHESES "()", DIMS ARE IN INCHES.
- ALL FORCES: POUNDS
- CONTACT PART NUMBER: 4250000872/873
- NO WARRANTY OR GUARANTEE EXPRESSED OR IMPLIED IS MADE REGARDING THE INFORMATION PRESENTED HEREIN. IT IS, HOWEVER, TRUE AND ACCURATE TO THE BEST OF OUR KNOWLEDGE.
- ⑤ PRODUCT NOT RATED FOR 14 AWG AMPERAGE (10+ AMPS), HOWEVER CAN BE USED FOR VOLTAGE DROP ONLY.



UNITS	ENGLISH	Cinch		1700 FINLEY RD. LOMBARD, IL. 60148
DO NOT SCALE DRAWING		TITLE FEMALE TERMINAL BIR 16/20 AWG UNIVERSAL		
UNLESS OTHERWISE SPECIFIED: ALL DIMENSIONS ARE IN INCHES		PRO/E DRAWING		
FILLET/RADII .02 MAX	TOLERANCES .X ± .1 .XX ± .01 .XXX ± .005 ANGULAR ± .5°	CAD FILE NUMBER 4250000872S	DRAWING NUMBER 425 00 00 872S	REV H
THIS DOCUMENT IS THE PROPERTY OF CINCH. NEITHER THIS DOCUMENT NOR ANY OF THE INFORMATION CONTAINED IN IT MAY BE DUPLICATED OR DISCLOSED WITHOUT PRIOR WRITTEN CONSENT OF CINCH.		CAGE IDENT NO. 71785	SCALE B 1:250	SHEET 2 OF 2