

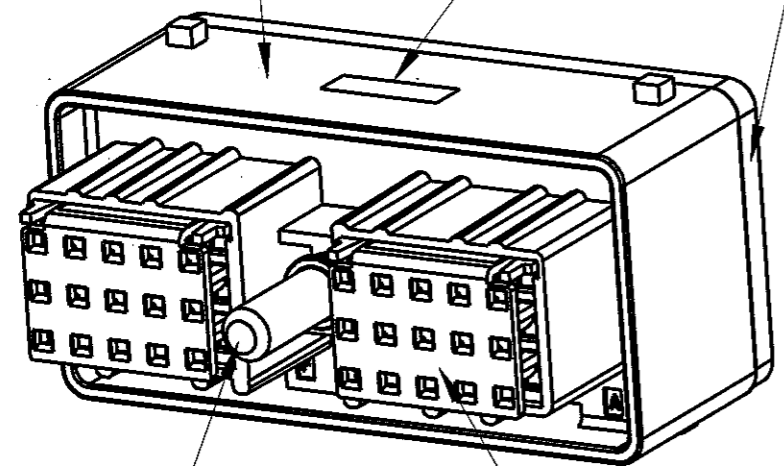
REAR VIEW

2.6 REF [ .10 ]  
SECONDARY LOCK SHIPPED  
IN PRE-STAGED POSITION

INSULATOR COLOR: GREY  
(POLYAMIDE BASED  
ALLOY GLASS-FILLED)

BACK PLATE  
COLOR: GREY  
(GLASS-FILLED POLYESTER)

DATE CODE



JACKSCREW, STEEL  
10-24 UNC THREAD  
(YELLOW CHROMATE)

SECONDARY LOCK  
COLOR: WHITE  
(GLASS-FILLED POLYESTER)

**NOTES:**

- ALL DIMENSIONS ARE IN MILLIMETERS, DIMENSIONS IN [ ] ARE IN INCHES.
- FOR WIRE SIZE APPLICATION, CONSULT FACTORY.
- FEMALE TERMINAL ORDERED SEPARATELY: 425 00 00 873/872.
- MATES WITH CINCH HEADER CONNECTOR (CONSULT FACTORY).
- SEAL PLUG ORDERED SEPARATELY: 581 00 00 011.
- STANDARD CELL PACK: QUANTITY 70 PIECES.
- TOLERANCES UNLESS OTHERWISE SPECIFIED:  
.X ±0.5  
.XX ±0.25
- SEALING RANGE FOR WIRE INSULATION DIA.;  
MAX 2.64MM (.104"), MIN 1.96MM (.077").
- A TRIANGLE ▲ INDICATES CRITICAL FUNCTION DIMENSION.
- IF TIE-WRAP DRESSING CONDUCTORS, CINCH RECOMMENDS A SPACING OF NO LESS THAN 2 INCHES BEHIND THE BACK PLATE.

**DRAWING REVISIONS**

REV	DOCUMENT	APP	DATE
A	RELEASE TO PRODUCTION PER D.O. 99-1161	AC	5/03/01
B	REMOVED 23.4 DIM. ADDED 2.6 REF DIM. ADDED SECONDARY LOCK NOTE. ADDED NOTE 9. ADDED CRITICAL SYMBOL TO DIMENSION 32.3 ADDED DATE CODE NOTE. PER ECN #01A581.	JLD	10/20/01
C	ADD: NOTE 10 ADD: TOL BLOCK COVER PER ECN #04A270.	AC	07/07/04
D	ECN 06RA536 NOTE 10 WAS 4" BEHIND	AC	11/20/06

MODELED BY:  
J. DRYE

METRIC		PRO/E		Cinch		1700 FINLEY RD LOMBARD, IL 60148	
DO NOT SCALE DRAWING		DRAWN BY B. KOSTIC	DATE 5/10/00	TITLE CONNECTOR ASSEMBLY SOCKET 30 POSITION		CONTROL SPEC NUMBER POLAR A	
		DESIGN ENGINEER A. CAINES	5/03/01	MATERIAL SEE VIEW		PROJECT NUMBER A14243	
		DESIGN ENGINEERING MGR. J. DRYE	5/03/01	MATERIAL SPEC NUMBER	FINISH		
		MFG. ENGINEERING P. WALTHALL	5/03/01	CAD FILE NUMBER 5810130027S	DRAWING NUMBER 581 01 30 027S		
		QUALITY ASSURANCE T. SHAH	5/03/01	CAGE IDENT NO. SIZE 71785 B	SCALE 1.000:1	SHEET 1 OF 1	

THIS DOCUMENT IS THE PROPERTY OF CINCH. NEITHER THIS DOCUMENT NOR ANY OF THE INFORMATION CONTAINED IN IT MAY BE DUPLICATED OR DISCLOSED WITHOUT PRIOR WRITTEN CONSENT OF CINCH.