

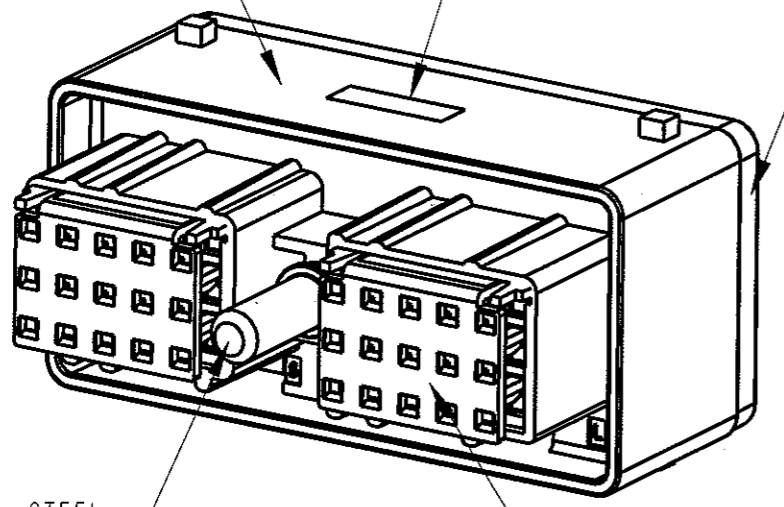
REAR VIEW

2.6 REF [.10]
SECONDARY LOCK SHIPPED
IN PRE-STAGED POSITION

INSULATOR COLOR: BLACK
(POLYAMIDE BASED
ALLOY GLASS-FILLED)

DATE CODE

BACK PLATE
COLOR: BLACK
(GLASS-FILLED POLYESTER)



JACKSCREW, STEEL
10-24 UNC THREAD
(YELLOW CHROMATE)

SECONDARY LOCK
COLOR: WHITE
(GLASS-FILLED POLYESTER)

NOTES:

1. ALL DIMENSIONS ARE IN MILLIMETERS. DIMENSIONS IN [] ARE IN INCHES.
2. FOR WIRE SIZE APPLICATION, CONSULT FACTORY.
3. FEMALE TERMINAL ORDERED SEPARATELY: 425 00 00 873/872.
4. MATES WITH CINCH HEADER CONNECTOR (CONSULT FACTORY).
5. SEAL PLUG ORDERED SEPARATELY: 581 00 00 011.
6. STANDARD CELL PACK: QUANTITY 70 PIECES.
7. TOLERANCES UNLESS OTHERWISE SPECIFIED:
X ±0.5
.XX ±0.25
8. SEALING RANGE FOR WIRE INSULATION DIA.;
MAX 2.64MM (.104"), MIN 1.96MM (.077").
9. A TRIANGLE ▲ INDICATES CRITICAL FUNCTION DIMENSION.
10. IF TIE-WRAP DRESSING CONDUCTORS, CINCH RECOMMENDS A SPACING
OF NO LESS THAN 2 INCHES BEHIND THE BACK PLATE.

DRAWING REVISIONS

SYM	DOCUMENT	APP	DATE
A	RELEASE TO PRODUCTION PER D.O. 99-1161	AC	5/03/01
B	REMOVED 23.4 DIM. ADDED 2.6 REF DIM. ADDED SECONDARY LOCK NOTE. ADDED NOTE 9. ADDED CRITICAL SYMBOL TO DIMENSION 32.3 ADDED DATE CODE NOTE. PER ECN #01A582.	JLD	10/20/01
C	ADD: NOTE 10 ADD: TOL BLOCK COVER PER ECN #04A271.	AC	07/07/04
D	ECN 06A536 NOTE 10 WAS 4" BEHIND	AC	11/20/06

MODELED BY:
J. DRYE

METRIC		PRO/E		Cinch		1700 FINLEY RD LOMBARD, IL. 60148	
DO NOT SCALE DRAWING		DRAWN BY B. KOSTIC	DATE 05/10/00	TITLE CONNECTOR ASSEMBLY SOCKET 30 POSITION		CONTROL SPEC NUMBER POLAR B	
		DESIGN ENGINEER A. CAINES	05/03/01	MATERIAL SEE VIEW		PROJECT NUMBER A14243	
		DESIGN ENGINEERING MGR. J. DRYE	05/03/01	MATERIAL SPEC NUMBER	FINISH		
		MFG. ENGINEERING P. WALTHALL	05/03/01	CAD FILE NUMBER 5810130028S	DRAWING NUMBER 581 01 30 028S		
		QUALITY ASSURANCE T. SHAH	05/03/01	CAGE IDENT NO. SIZE 71785 B	SCALE 1.500	SHEET 1 OF 1	

THIS DOCUMENT IS THE PROPERTY OF CINCH. NEITHER THIS DOCUMENT NOR ANY OF THE INFORMATION CONTAINED IN IT MAY BE DUPLICATED OR DISCLOSED WITHOUT PRIOR WRITTEN CONSENT OF CINCH.