


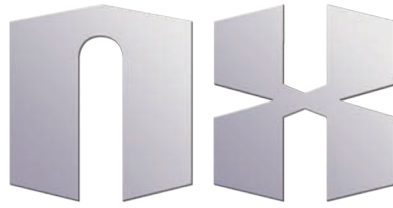


Cables





**Take your
Signal
down a
faster
lane.**



Cinch Connectors introduces low loss high speed cables for InfiniBand, Ethernet 10GBase-CX4, SAS and other high speed I/O applications requiring demanding electrical performance.

Recognizing the need to minimize discontinuities in the cable termination that cause signal degradation, the NX Cables incorporate laser welded, direct attach termination of the cable wires to the cable connector contacts. Coupled with a unique ground shield between pairs and a unique cable design, the NX Cables provide the lowest loss interconnect available today with less than 2% crosstalk.

Cinch's advanced manufacturing technique and wafer construction provides superior signal fidelity over long distances.



Key Features

- Laser welded direct attach termination
- 24AWG through 30AWG
- Latching or jackscrew
- 4X and 12X connector widths
- Straight, angled or Z-axis cable exit from backshell
- Auto Latch and ergonomic release

SAS and CX4

	2	3	4	5	6	7	8	9	11	13	17 (Meters)
30 AWG											
28 AWG											
26 AWG											
24 AWG											



InfiniBand DDR

	2	3	4	5	6	7	8	9	11	13	17 (Meters)
30 AWG											
28 AWG											
26 AWG											
24 AWG											



InfiniBand QDR

	2	3	4	5	6	7	8	9	11	13	17 (Meters)
30 AWG											
28 AWG											
26 AWG											
24 AWG											



*Lengths based on actual testing and port to port performance using outermost port (worst case).

Electrical Performance

Differential Impedance: 100 +/- 5 Ω @ 100psec rise time

Near End Crosstalk: <1.5% @ 50psec rise time with 4 aggressors

S11: < or = -15dB to 5GHz (3m 28AWG cable)

S21: < 10dB attenuation at 5HGz (3m 28AWG cable)

CX4 PSXT: < or = 30dB @ 5GHz (3m 28AWG cable) sum of PSNEXT (3pairs) and PSFEXT(4 pairs)

InfiniBand Eye pattern opening with Xtalk (3m 28AWG cable):

- SDR(2.5Gb/s): 372psec width x 600mV height
- DDR(5.0Gb/s): 166psec width x 421mV height
- QDR(10Gb/s): 54.7psec width x 153mV height

Mechanical Performance

Complies with SFF8470, InfiniBand, Ethernet 10GbaseCX4 and SAS specifications

Cable: Twinax, UL CL-2 or CM 24, 26, 28 and 30 AWG

Temp range: -10°C to 60°C

Durability: 250 cycles



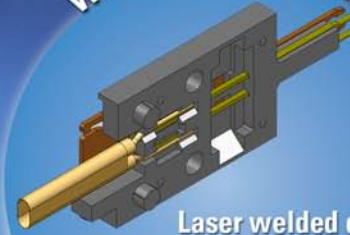
Cables

Take Your Signal Down a Faster Lane

Back Shells

- Straight Latching
- Belly to Belly Latching
- Angled Latching
- Z-Axis Latching
- Straight Jackscrew
- Angled Jackscrew
- Z-Axis Jackscrew

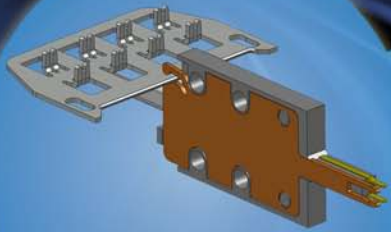
Wafer Construction



- Laser welded direct attach termination
- Consistent
 - Low Loss



Ground Blade



Superior crosstalk isolation

Latching

- Ergonomic Latch Pull
- Tether
- Plastic Cover to Release

Length (meters)	Wire Gage	4X Straight Exit		12X Straight Exit	
		Latch	Jackscrew	Latch	Jackscrew
0.5	30	717 01 00 060	717 01 00 070	717 02 00 060	717 02 00 070
1.0	30	717 01 00 061	717 01 00 071	717 02 00 061	717 02 00 071
2.0	28	717 01 00 042	717 01 00 052	717 02 00 042	717 02 00 052
3.0	28	717 01 00 043	717 01 00 053	717 02 00 043	717 02 00 053
5.0	28	717 01 00 044	717 01 00 054	717 02 00 044	717 02 00 054
7.0	26	717 01 00 025	717 01 00 035	717 02 00 025	717 02 00 035
10	24	717 01 00 0007	717 01 00 016	717 02 00 0006	717 02 00 016
15	24	717 01 00 009			

Additional cable lengths and backshell cable exits are available.

Proven Excellence

For over 70 years, Cinch has been a supplier of quality connector and interconnect products to the computer, telecom, aerospace military and transportation industries. We are a multi-national manufacturer with facilities in the US, Mexico and the UK supplying global customers.

Cinch applies its extensive expertise in interconnection technology to engineer and manufacture connectors, cables and harnesses using state of the art technology and tooling. Mechanical design is accomplished using Pro/E 3D solid modeling supported by nonlinear and linear Finite Element Analysis and Mold Flow software.

Our engineers utilize in-house capabilities in high frequency interconnect simulation, SPICE model generation and high frequency testing to develop the optimum product.

All products are validated in Cinch's first article, mechanical, electrical, and environmental test facilities ensuring the finished products meet our customers' most stringent specifications.

Simply stated, your connectors are manufactured in state of the art facilities that are committed to customer satisfaction and continuous improvement.

www.cinch.com

Americas and Asia

1700 Finley Road

Lombard, IL 60148

USA

1.800.323.9612

630.705.6000

Europe

Shireoaks Road

Worksop S80 3HA

Nottinghamshire

U.K.

44.1.909.474131

