

DRAWING REVISIONS			
REV	DOCUMENT	APP	DATE
A	08 - 1093	VS	9/18/08

**NOTES:**

**CABLE SPECIFICATIONS:**

TWINAX; FULLY SHIELDED DIFFERENTIAL PAIRS, 24 AWG; UL STYLE CL2 OR CM. CHARACTERISTIC IMPEDANCE: 100. +/- 5 OHMS.

**PLUG MATERIALS:**

CONTACTS - COPPER ALLOY; GOLD PLATED OVER NICKEL.  
SHELL - ZINC DIE CAST; NICKEL PLATED OVER COPPER.  
LATCH MECHANISM - THERMOPLASTIC AND NICKEL ALLOY.  
CONNECTOR HOUSING - HIGH TEMPERATURE THERMOPLASTIC UL94V-0.

**MECHANICAL PERFORMANCE:**

LATCH RETENTION FORCE: - 75 N (16.9 LBS) MIN.  
DURABILITY - 250 CYCLES.

**ENVIRONMENT:**

OPERATING TEMPERATURE RANGE: -20°C to 75°C.

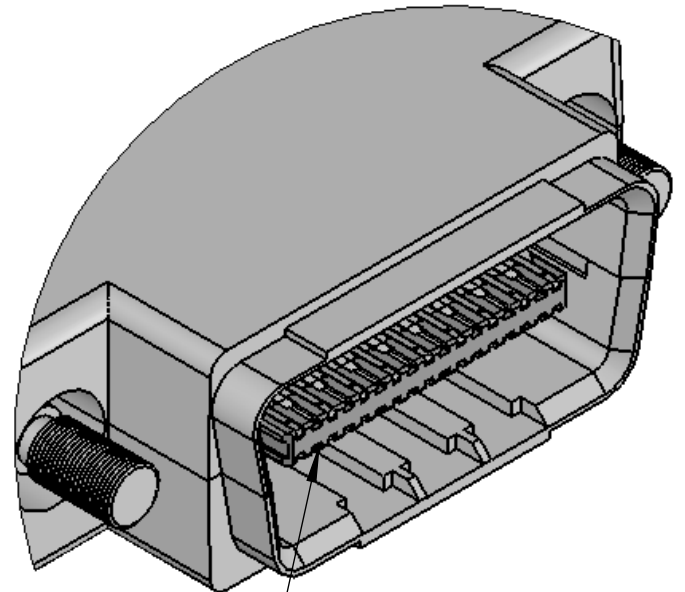
**PERFORMANCE:**

DIRECT ATTACH CABLE ASSEMBLY MEETS InfiniBand™ REQUIREMENTS FOR HIGH SPEED DATA TRANSFERS AND SFF 8470

DIMENSIONS IN [ ] ARE IN INCHES.

**STANDARD PART NUMBERS  
CONSULT FACTORY FOR CUSTOM  
CONFIGURATIONS AND LENGTH**

24 AWG CABLE	
"L" Meters	Part Number
1	717 01 00 011
2	717 01 00 012
3	717 01 00 013
5	717 01 00 014
7	717 01 00 015
10	717 01 00 016



DETAIL A  
SCALE 4 : 1

TOLERANCE TABLE	
"L" LENGTH	TOLERANCE
UP TO 1M	±40.0mm
1M TO 10M	±70.0mm OF "L"
GREATER THAN 10M	±100mm OF "L"

**RoHS COMPLIANT**

UNITS <b>METRIC</b>		<b>SOLIDWORKS</b>	MODELED BY:
DO NOT SCALE DRAWING	DRAWN BY V.SKUZA	DATE 6/19/08	TITLE <b>STANDARD 4X STRAIGHT 24 AWG DIRECT ATTACH PASSIVE CABLE WITH JACK SCREWS</b>
UNLESS OTHERWISE SPECIFIED: ALL DIMENSIONS ARE IN MM. FILLET/RADIUS 0.50 MAX	DESIGN ENGINEER		MATERIAL CONTROL SPEC NUMBER
TOLERANCES X ± .3 XX ± .13 XXX ± .025 ANGULAR ± 0.5°	DESIGN ENGINEERING MFR.		MATERIAL SPEC NUMBER FINISH PROJECT NUMBER
THIS DOCUMENT IS THE PROPERTY OF CINCH. NEITHER THIS DOCUMENT NOR ANY OF THE INFORMATION CONTAINED IN IT MAY BE DUPLICATED OR DISCLOSED WITHOUT PRIOR WRITTEN CONSENT OF CINCH.	MFG. ENGINEERING		CAD FILE NUMBER DRAWING NUMBER <b>717 01 00 011 S</b>
	QUALITY ASSURANCE		CAGE IDENT NO. SIZE SCALE: <b>1 : 1</b> SHEET 1 OF 1