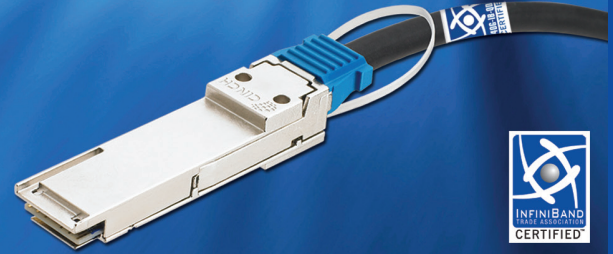


# QSFP+ to NX Hybrid High Speed Cables



## The Cinch Advantage: How we do it.

Cinch Connectors QSFP+ to NX hybrid copper cable assemblies combine Cinch industry leading performance of both of these standard interfaces and are manufactured to exceed industry standard performance specifications for InfiniBand QDR, 40G Ethernet, SAS and Fibre Channel applications.

Cinch QSFP+ passive cable family offers the following superior advantages:

- **Superior Crosstalk Management:** Utilizing the Cinch patented PairShield™ technology in both the QSFP+ and NX connector, the Cinch hybrid cables deliver a dramatic improvement in crosstalk containment.
- **Ergonomic Design:** Both the QSFP+ and the NX plugs include an ergonomic pull-to-release latch tether as well as an audible “click” when fully latched.



- **“Smart” Cables:** All Cinch QSFP+ cable plugs include DC blocking capacitors on the receive lanes as well as an EEPROM cable management interface programmed per SFF8436 memory map as well as module select buffer.
- **24-30 Gage Availability:** Cables are available in a range of wire gages including 24, 26, 28 and 30AWG twinax cables with lengths ranging from 0.50m for 30AWG to 10m for 24AWG.
- **Independent Recognition:** Cinch Connectors is a proud participant in the IBTA Logo License program. Cinch earned recognition on the IBTA Integrator’s list for both DDR and QDR applications.

## The Cinch Hybrid Passive Cable Family Meets Industry Standard Requirements:

### Small Formfactor Committee

- NX conforms to the Small Form Factor SFF8470 specification
  - QSFP+ conforms to the Small Form Factor SFF8436
- See [www.sffcommittee.org](http://www.sffcommittee.org) for SFF specifications

### InfiniBand Trade Association

- Hybrid cables meet the IBTA specification for both Quad data Rate (QDR -10Gbs) as well as Double Data Rate (DDR – 5Gbs) depending on cable length

See [www.infinibandta.org](http://www.infinibandta.org) for InfiniBand specifications

### Ethernet

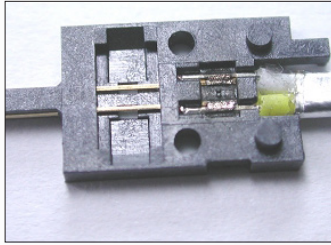
- Hybrid cables supports IEEE802.3 specifications for CX4 and 40Gb XLAUI depending on cable length

See [www.ieee802.org](http://www.ieee802.org) for Ethernet specifications

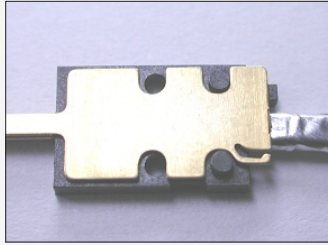
## Typical Applications

- HPC Server Clusters
- Enterprise Data Center Networks

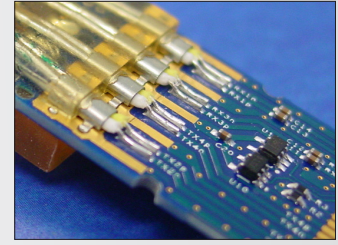
# The Cinch QSFP+ to NX Hybrid



**PairShield™ NX Welded Termination**



**PairShield™ NX Wafer Ground Shield**



**PairShield™ Ground Clip Termination**

Part Number	Cable Type	Length (meters)	Wire Gage
717-06-00-060	Passive	0.50	30
717-06-00-061	Passive	1.00	30
717-06-00-062	Passive	2.00	30
717-06-00-063	Passive	3.00	30
717-06-00-064	Passive	4.00	30
717-06-00-065	Passive	5.00	30
717-06-00-040	Passive	0.50	28
717-06-00-041	Passive	1.00	28
717-06-00-042	Passive	2.00	28
717-06-00-045	Passive	3.00	28
717-06-00-043	Passive	4.00	28
717-06-00-044	Passive	5.00	28
717-06-00-046	Passive	6.00	28
717-06-00-020	Passive	2.00	26
717-06-00-021	Passive	3.00	26
717-06-00-023	Passive	4.00	26
717-06-00-022	Passive	5.00	26
717-06-00-024	Passive	6.00	26
717-06-00-025	Passive	7.00	26
717-06-00-026	Passive	8.00	26
717-06-00-001	Passive	3.00	24
717-06-00-003	Passive	4.00	24
717-06-00-002	Passive	5.00	24
717-06-00-005	Passive	6.00	24
717-06-00-006	Passive	7.00	24
717-06-00-004	Passive	8.00	24
717-06-00-007	Passive	9.00	24
717-06-00-008	Passive	10.00	24

Applications are shown for reference. Cables are available for test in your system.

To request quotations, testable cable samples or for additional information, please email [hybrid@cinch.com](mailto:hybrid@cinch.com).