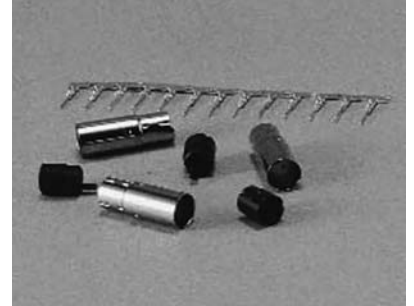


Features

- Individual components available for cable assembly with overmoulding.
- Plug insulator available with contact positions 3, 4, 5, 6, 7, and 8.
- Seamless shield case is crimped to cable shield; designed to meet FCC requirements for EMI/RFI suppression.
- One-piece shield case - no extra ferrules or shields required with Cinch Shield Crimp Tools.
- Contacts are crimp style and supplied on reels.
- Contacts available with gold over nickel in several options.
- Tools available to facilitate reliable, efficient termination.
- Terminates 24 to 30 AWG wire.
- UL Recognised - file E170218 (UL1977).



Materials

Insulation Material: Plug Insulator: 94 V-0 rated nylon

Contact Material: Plug: Phosphor bronze

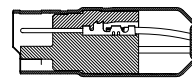
Contact Plating:

- Option 1: Gold Flash over nickel underplate overall
- Option 2: Option 1 plus additional gold in mating area for total thickness of 30µin.
- Option 3: Option 1 plus additional gold in mating area for total thickness of 50µin.

Shield Material: Steel

Shield Plating: Nickel

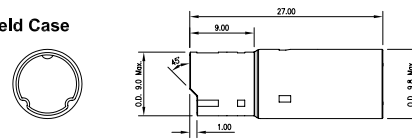
Cross Section of Assembly



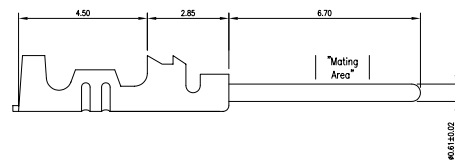
Crimped Contact



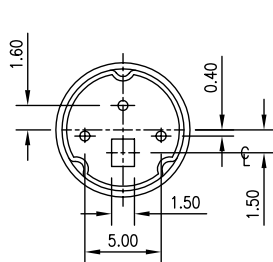
Shield Case



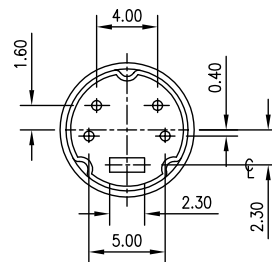
Contact



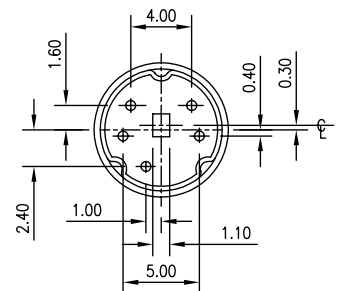
Dimensions



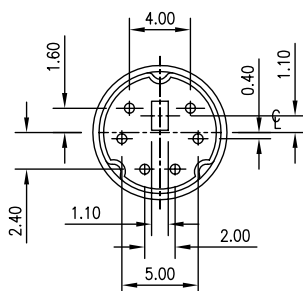
3-Contacts



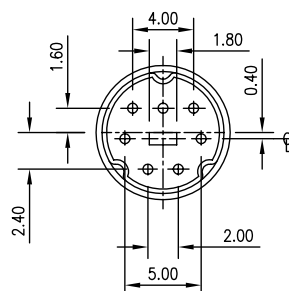
4-Contacts



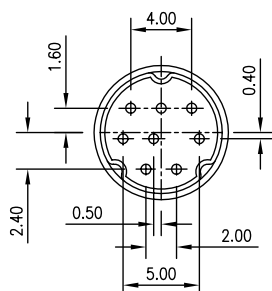
5-Contacts



6-Contacts



7-Contacts



8-Contacts

■ Component Ordering Information

For each Plug Assembly, the following components are needed: one plug insulator, one shield, and adequate contacts.

Component Type	Description	Catalog No.	
Insulator	3 Position Insulator 1	MDX-3PI	
	4 Position Insulator 1	MDX-4PI	
	5 Position Insulator 1	MDX-5PI	
	6 Position Insulator 1	MDX-6PI	
	7 Position Insulator 1	MDX-7PI	
	8 Position Insulator 1	MDX-8PI	
	Shield Case	Metal Shield Case 1	MDX-PZ
	Contact	Option 1 Plating 300 on Reel	MDX-P-3A
Option 1 Plating 15,000 on Reel		MDX-P-15A	
Option 2 Plating 300 on Reel		MDX-P-3B	
Option 2 Plating 15,000 on Reel		MDX-P-15B	
Option 3 Plating 15,000 on Reel		MDX-P-15D	

■ Tool Ordering Information

The following tools are recommended for Mini Din Cable Plug Assembly. One tool of each type is required.

Tool Type	Description	Catalog No.
Contact Crimp	Stripper-Crimper Machine Complete, Includes Dies	MDT-P25
	Contact Crimp Hand Tool Crimps using 300 Contact Reels	MDT-P35
Contact Insertion	Combination Contact Insertion and Insulator Insertion Tool	MDT-P41
Contact Insertion	Hand Tool	MDT-P28
	Fixture used with MDT-P28	MDT-P29
	Insulator Insertion Insulator Insertion Bench Mounted Tool	MDT-P34
	Insulator Insertion Hand Tool	MDT-P30
	Shield Crimp Pneumatic Crimp Tool	MDT-P81

■ Overview of Assembly Steps

- Prepare multi-conductor cable.
- Crimp contacts onto individual conductors using tool MDT-P25 or tool MDT-P35.
- Insert contact with conductor into insulator using tool MDT-P41 or have insertion tool MDT-P28 with insulator locating vice MDT-P29.
- Insert insulator into the shield case using tool MDT-P34 or MDT-P30.
- Crimp the shield case onto the cable shield using tool MDT-P81.
- Overmold plastic to complete the assembly.