

NOTES:

1. SPECIFICATIONS:

ELECTRICAL:  
 WITHSTANDING VOLTAGE: MINIMUM 1000 V RMS @ SEA LEVEL  
 INSULATION RESISTANCE: INITIAL 5000 MEGOHMS MAXIMUM,  
 1000 MEGOHMS MIN. AFTER ENVIRONMENTAL TESTING.  
 CONTACT RATING: 5 AMPS  
 CONTACT RESISTANCE: 2.7 MILLIOHMS MAX.

MATERIALS:  
 INSULATOR: BLACK UL94V-0 RATED GLASS FILLED NYLON  
 CONTACT(O30-1953-000): COPPER ALLOY  
 CONTACT AREA PLATING: GOLD OVER NICKEL,  
 CONNECTOR SHELL: STEEL, PLATING ZINC WITH CLEAR CHROMATE.

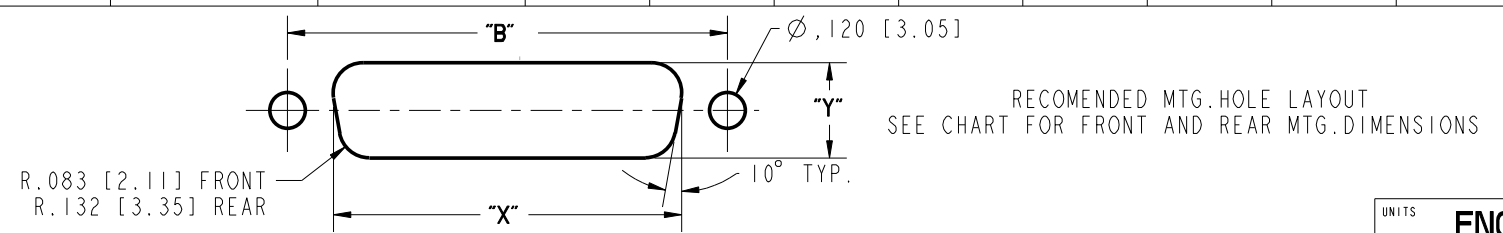
ENVIRONMENTAL:  
 OPERATING TEMPERATURE: -65°C TO +125°C

TERMINATION:  
 CRIMP WILL ACCOMMODATE # 20 TO 28 AWG WIRE.  
 TERMINATION-TOOLS:  
 CRIMP TOOL: M22520/2-01  
 INSERTION/EXTRACTION TOOL: CIET-20-HDB  
 POSITIONER: EP-580

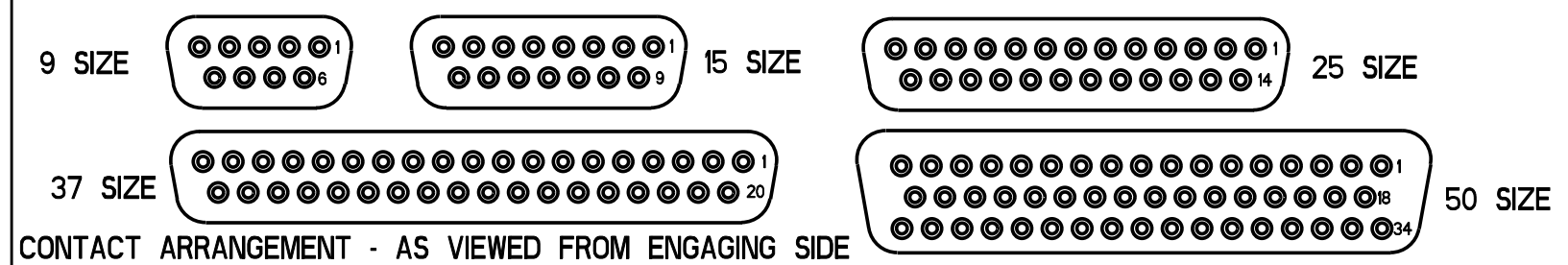
2. DIMENSIONS IN [ ] ARE IN MILLIMETERS.

DRAWING REVISIONS			
REV	DOCUMENT	APP	DATE
A	DO 05-1094	AKB	1/7/06
B	ECN 06E208		

NUMBER OF POSITIONS	SELECTIVE GOLD FLASH PLATING (.120" [3.05] MTG. HOLES)		CONTACTS	DIMENSION							FRONT MOUNTING HOLE DIMENSIONS		REAR MOUNTING HOLE DIMENSIONS	
	PART NO.	FACTORY NO.		"A"	"B"	"C"	"D"	"E"	"F"	"G"	"X"	"Y"	"X"	"Y"
9	DEUH-9S	702 13 09 001	INCLUDED	1.213	.984	.640	.308	.494	.759	.422	.874	.513	.806	.449
	DEUH-9S-FO	702 13 09 005	NOT INCLUDED	[30.81]	[24.99]	[16.26]								
15	DAUH-15S	702 13 15 001	INCLUDED	1.541	1.312	.968	.308	.494	1.083	.422	1.202	.513	1.134	.449
	DAUH-15S-FO	702 13 15 005	NOT INCLUDED	[39.14]	[33.32]	[24.59]								
25	DBUH-25S	702 13 25 001	INCLUDED	2.088	1.852	1.508	.308	.494	1.625	.422	1.743	.513	1.674	.449
	DBUH-25S-FO	702 13 25 005	NOT INCLUDED	[53.04]	[47.04]	[38.30]								
37	DCUH-37S	702 13 37 001	INCLUDED	2.729	2.500	2.156	.308	.494	2.272	.422	2.391	.513	2.326	.449
	DCUH-37S-FO	702 13 37 005	NOT INCLUDED	[69.32]	[64.50]	[54.76]								
50	DDUH-50S	702 13 50 001	INCLUDED	2.635	2.406	2.062	.420	.605	2.178	.534	2.297	.623	2.218	.555
	DDUH-50S-FO	702 13 50 005	NOT INCLUDED	[66.93]	[61.11]	[52.37]								



**ROHS COMPLIANT**



UNITS	ENGLISH	PRO/E	Cinch	
DO NOT SCALE DRAWING	DRAWN BY V. SKUZA	DATE 06/24/05	TITLE D*U SERIES CRIMP & POKE CONNECTOR SKT. ASS'Y (.120" MTG HOLES)	
	DESIGN ENGINEER A. BALI	06/24/05	MATERIAL CONTROL SPEC NUMBER	
	DESIGN ENGINEERING MGR. A. SHAH	07/09/05	MATERIAL SPEC NUMBER	FINISH PROJECT NUMBER C14740
	MFG. ENGINEERING J. OCEGUERA	07/07/05	CAD FILE NUMBER DXUH-XXS	DRAWING NUMBER <b>D*UH-XXS</b>
	QUALITY ASSURANCE A. VAZQUEZ	07/06/05	CAGE IDENT NO. / SIZE <b>71785 B</b>	SCALE 1:1 SHEET 1 OF 1