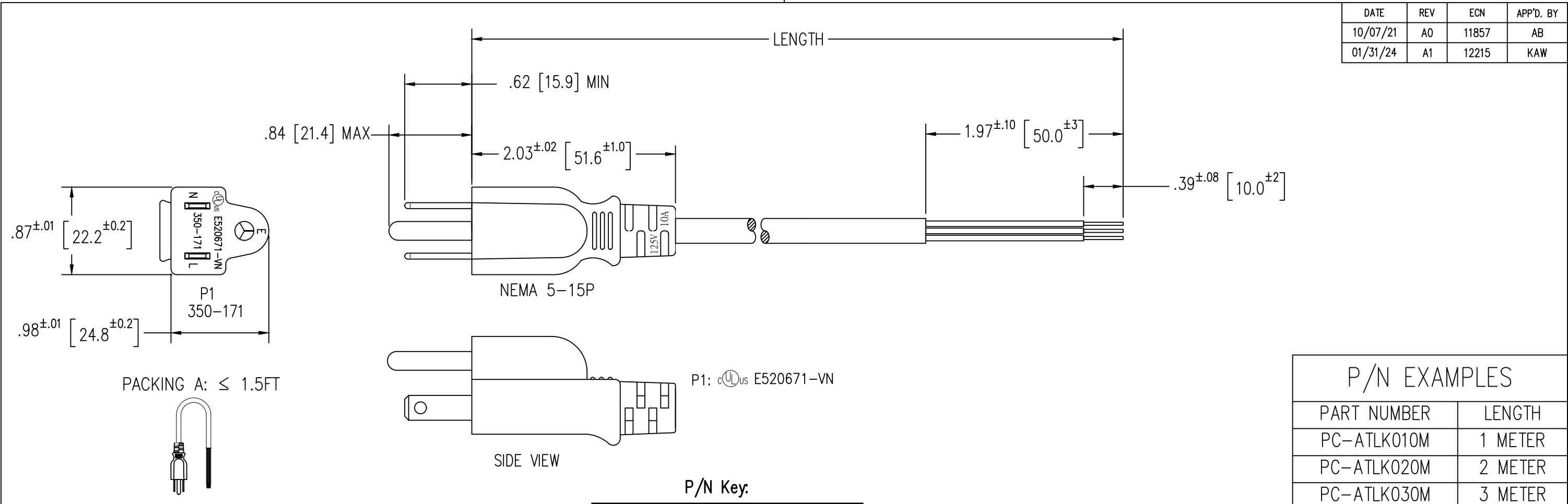
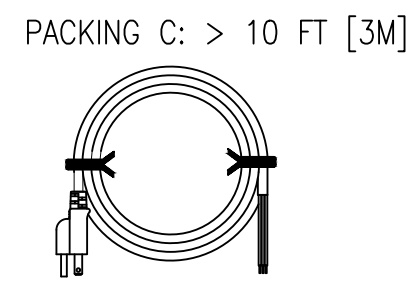
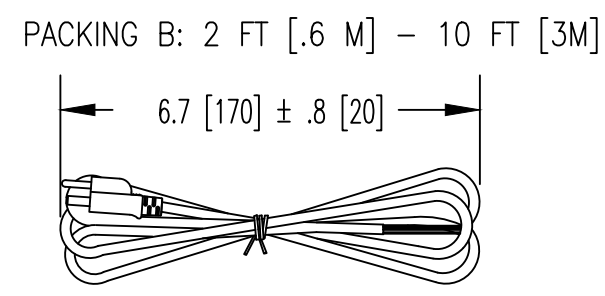
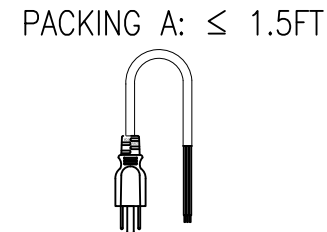


DATE	REV	ECN	APP'D. BY
10/07/21	A0	11857	AB
01/31/24	A1	12215	KAW



P/N EXAMPLES	
PART NUMBER	LENGTH
PC-ATLK010M	1 METER
PC-ATLK020M	2 METER
PC-ATLK030M	3 METER



**P/N Key:**

PC-A TL K xxx U

UNITS  
M = METRIC  
F = FEET

Length  
010 M = 1 M  
020 M = 2 M  
030 M = 3 M

COLOR  
K = BLACK

LEADS  
TL = TINNED LEADS

CONNECTOR END TYPE  
A = NEMA 5-15 P

PRODUCT FAMILY  
PC = POWER CORDS

- NOTES:
- SPECIFICATIONS:  
RATING: 10A 125V AC  
CABLE TYPE: UL SVT 18AWG 3C, OD 6.3mm COLOR BLACK  
CABLE MARKING: (UL) SVT 3/C 18AWG (0.824MM<sup>2</sup>) VW-1 75°C 300V E204978 C(UL)  
SVT 3/C 0.824MM<sup>2</sup> (18AWG) FT2 60°C 300V E204978 MSL-VN-  
END "P1": NEMA 5-15P, MOLDED PVC 35P, COLOR BLACK  
ALL RELEVANT MATERIALS ARE COMPLIANT WITH RoHS DIRECTIVE.
  - APPROVALS: UL cUL
  - TESTING:  
3.1. 100% CONTINUITY/SHORT  
3.2. HIPOT INTERNAL 2KV LASTING 1 SEC; EXTERNAL 2.5 KV. LASTING 1 SEC
  - OPERATING TEMPERATURE: -4° F (-20° C) TO 140° F (60° C)
  - HUMIDITY RANGE 10-85% RH

P1	STRIPPED JACKET 50mm
L	TINNED 10mm BLACK
N	TINNED 10mm WHITE
E	TINNED 10mm GREEN

<p>THIRD ANGLE PROJECTION</p>	<p>1118 Susquehanna Trail South Glen Rock, PA 17327-9199 (717) 235-7512 <a href="http://www.stewartconnector.com">http://www.stewartconnector.com</a></p>
<p>DRAWING IS SUBJECT TO CHANGE WITHOUT NOTICE</p> <p>Cable Length Unless Other Spec. Tolerances: 0 ~ 3.3 Ft [1M] ± .79 IN [20mm] 3.4 Ft [1.1M] ~ 5 Ft [1.5M] ± .98 IN [25mm] 5.1 Ft [1.6M] ~ 6.9 Ft [2M] ± 1.2 IN [30mm] 7.0 Ft [2.1M] ~ ↑ ± 1.6 IN [40mm] DO NOT SCALE DRAWING</p> <p>SHEET NO. 1 OF 1</p>	<p>TITLE: POWER SUPPLY CORDS NEMA 5-15P TO BLUNT (TINNED)</p> <p>THIS DRAWING AND THE SUBJECT MATTER SHOWN THEREON ARE CONFIDENTIAL AND THE PROPRIETARY PROPERTY OF STEWART CONNECTOR AND SHALL NOT BE REPRODUCED, COPIED, OR USED IN ANY MANNER WITHOUT PRIOR WRITTEN CONSENT OF STEWART CONNECTOR. ONE OR MORE U.S. PATENTS MAY APPLY TO THIS PRODUCT. FOR DETAILS, PLEASE VISIT: <a href="http://BELFUSE.COM/STEWART/STEWART_PATENTS/">HTTP://BELFUSE.COM/STEWART/STEWART_PATENTS/</a></p>
<p>DRN BY: GWL</p> <p>APPD BY: AB</p> <p>DWG NO. CT999268</p>	<p>DATE 9/16/21</p> <p>DATE 10/07/21</p> <p>REV. A1</p>

