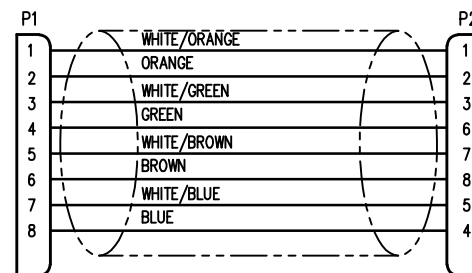
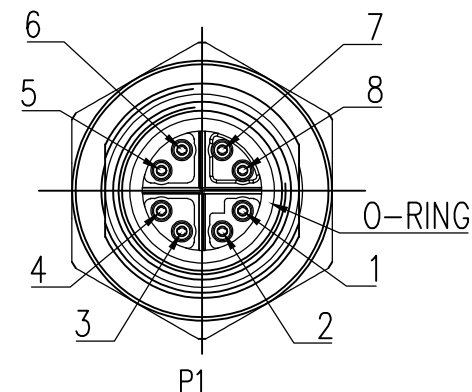


B



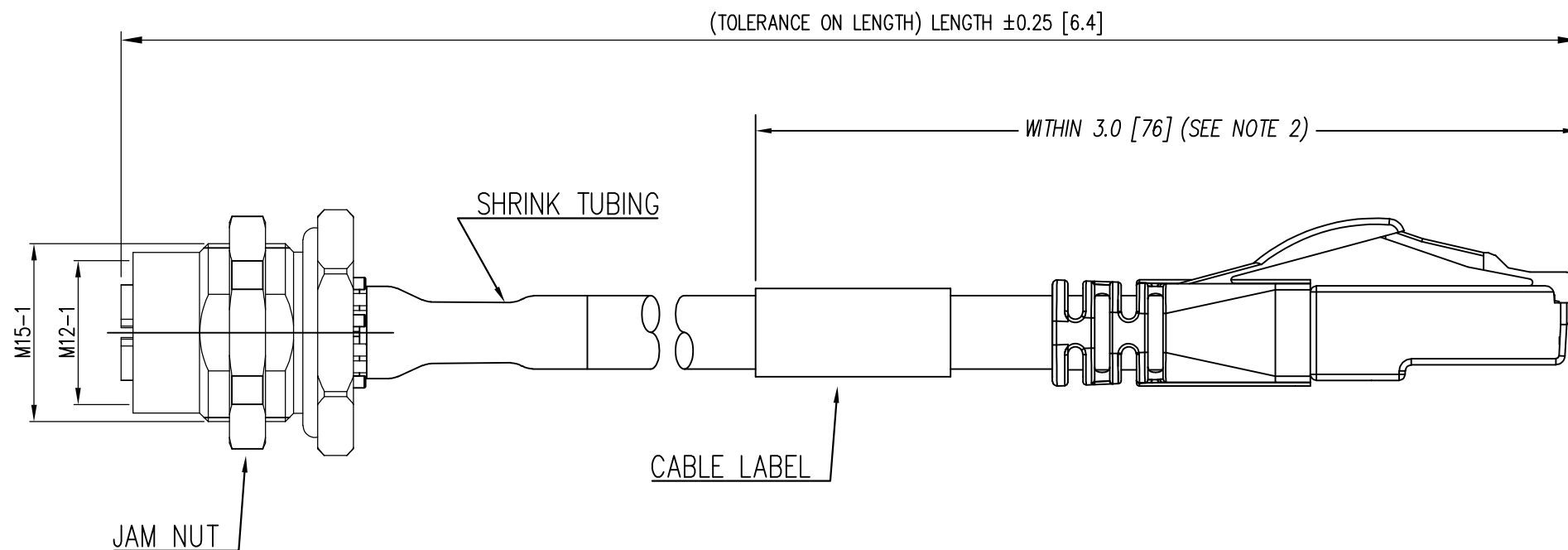
WIRING MAP

NOTES:

- 1) EACH CABLE ASSEMBLY TO BE INDIVIDUALLY BAGGED
- 2) CABLE ASSEMBLIES WITH LENGTHS LESS THAN 5" WILL NOT CONTAIN A CABLE LABEL
- 3) M12 X-CODE CONSTRUCTION
  - GOLD PLATED PHOSPHOR BRONZE CONTACTS
  - RATED IP68
- 4) CABLE CONSTRUCTION:
  - 28 AWG STRANDED
  - 4PR, U/UTP TYPE CMR
  - PVC Jacket
- 5) RJ45 CONSTRUCTION:
  - 50µ" GOLD PLATING ON CONTACTS
  - SLIMLINE SNAGLESS STRAIN RELIEF
- 6) M15 PANEL NUT SHOULD BE TIGHTENED TO 16-18N-m
- 7) TESTS:
  - 100% TESTED FOR WIRE MAP, CONTINUITY AND SHORTS
  - 100% TESTED FOR DWV AT 500VDC, PIN TO PIN

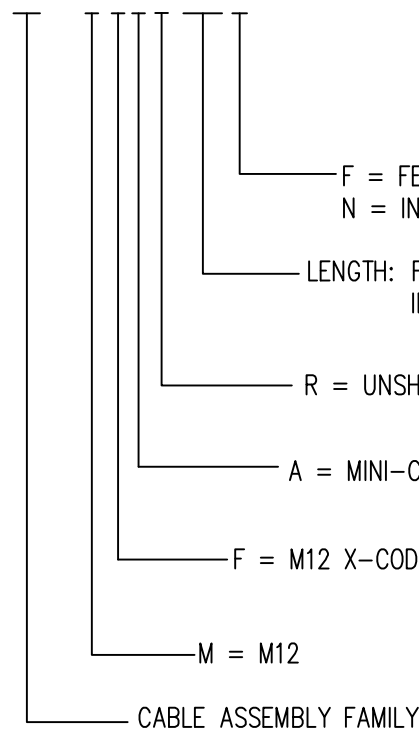
A

2



P/N STRUCTURE:

BM-MFARxxxY



F = FEET  
N = INCHES

LENGTH: FEET = xxx, 10FT = 100, 12.5FT = 125, 15FT = 150  
INCHES = xxx, 4.5IN = 045, 12IN = 120, 18IN = 180

R = UNSHIELDED, RJ45 CONNECTOR

A = MINI-C6, 28 AWG, BLUE, U/UTP CABLE

F = M12 X-CODE, IP 68 VERTICAL PANEL MOUNT

M = M12

CABLE ASSEMBLY FAMILY

RoHS

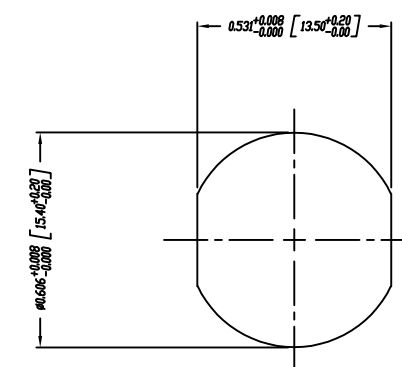
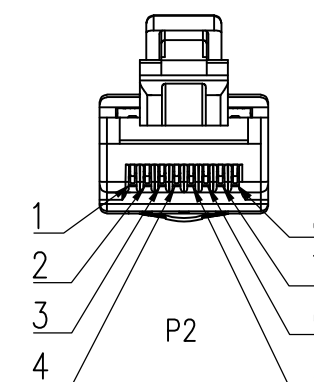


1

AutoCAD

AutoCAD

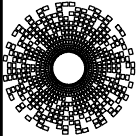
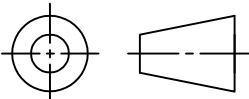
DATE	REV	ECN	APP'D. BY
12/04/23	A0	12281	GWL



PANEL CUT-OUT  
PANEL THICKNESS : 0.158 [4.00] MAX

BM-MFARxxxY

PART NUMBER

THIRD ANGLE PROJECTION		 <div>stewart CONNECTOR a bel group</div>		11118 Susquehanna Trail South Glen Rock, PA 17327-9199 (717) 235-7512 <a href="http://www.stewartconnector.com">http://www.stewartconnector.com</a>			
		TITLE <b>M12 X-CODE, IP 68 VERTICAL PANEL MOUNT WITH CAT 6 CABLE AND RJ45 PLUG</b>					
DO NOT SCALE DRAWING							
DRAWING IS SUBJECT TO CHANGE WITHOUT NOTICE							
DIMENSIONS: INCHES [METRIC]		THIS DRAWING AND THE SUBJECT MATTER SHOWN THEREON ARE CONFIDENTIAL AND THE PROPRIETARY PROPERTY OF STEWART CONNECTOR AND SHALL NOT BE REPRODUCED, COPIED, OR USED IN ANY MANNER WITHOUT PRIOR WRITTEN CONSENT OF STEWART CONNECTOR. ONE OR MORE U.S. PATENTS MAY APPLY TO THIS PRODUCT. FOR DETAILS, PLEASE VISIT: <a href="http://BELFUSE.COM/STEWART/STEWART_PATENTS/">HTTP://BELFUSE.COM/STEWART/STEWART_PATENTS/</a>		DRN BY: ARC		DATE 12/4/23	
UNLESS OTHERWISE SPECIFIED TOLERANCES ARE ±.005 [0.13] ANGLES ARE ± 1°				APPD BY: GWL		DATE 12/4/23	
SHEET NO. 1 OF 1				DWG NO. CT999297		REV. AC	