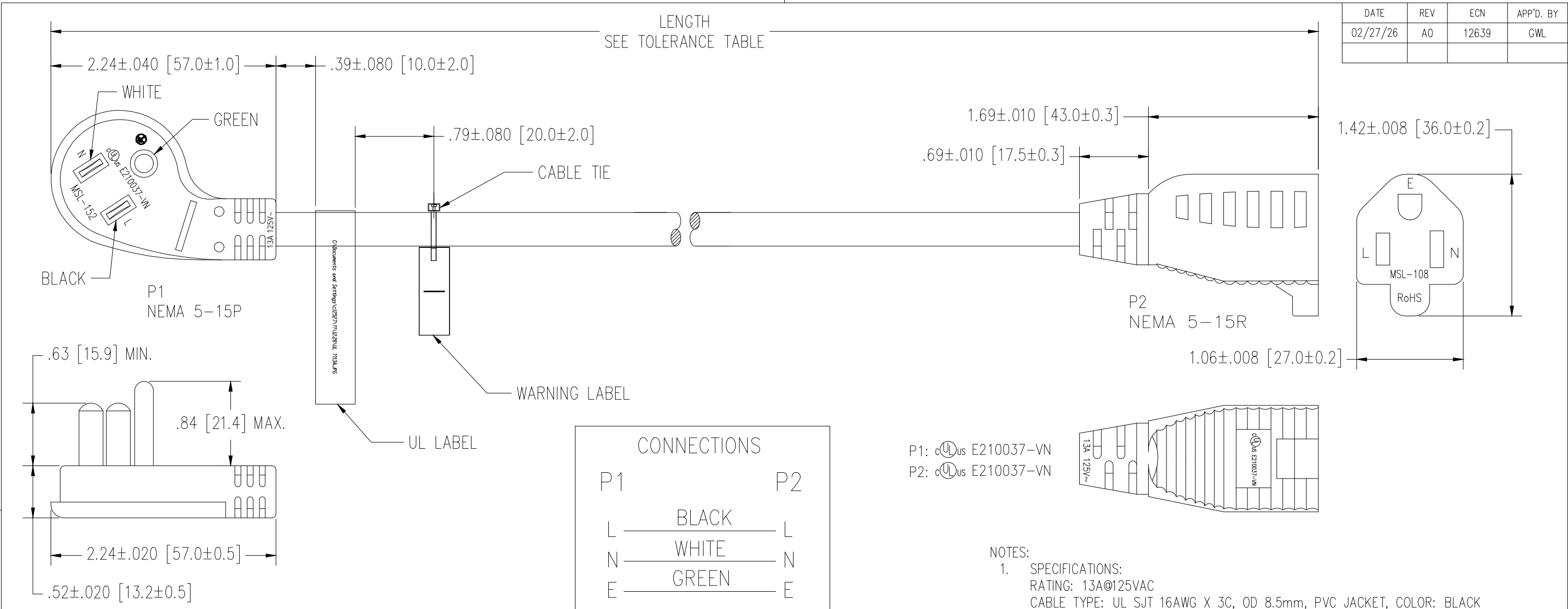


DATE	REV	ECN	APP'D. BY
02/27/26	A0	12639	GWL



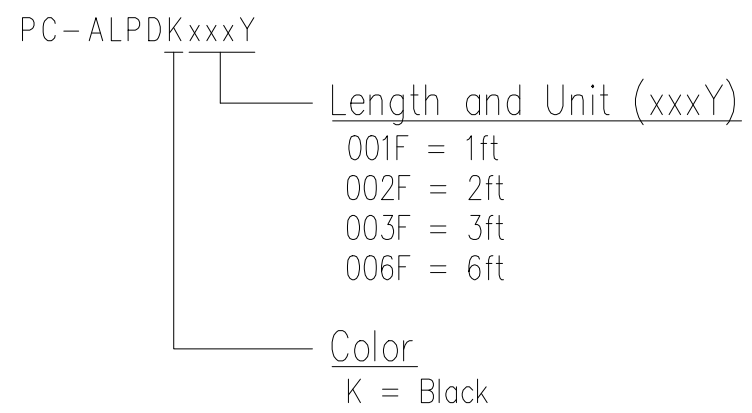
CONNECTIONS	
P1	P2
L	L
N	N
E	E

P1: cULus E210037-VN  
P2: cULus E210037-VN

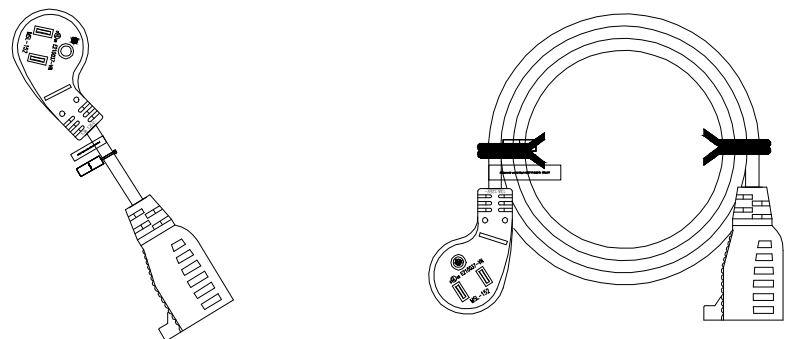
NOTES:

- SPECIFICATIONS:  
RATING: 13A@125VAC  
CABLE TYPE: UL SJT 16AWG X 3C, OD 8.5mm, PVC JACKET, COLOR: BLACK  
CABLE MARKING: (UL) SJT 3/C 16AWG (1.31MM<sup>2</sup>) VW-1 105°C 300V E204978 C(UL) SJT 3/C 1.31MM<sup>2</sup> (16AWG) FT2 105°C 300V E204978 MSL-VN-  
END P1: NEMA 5-15P, MOLDED PVC 35P, COLOR: BLACK  
END P2: NEMA 5-15R, MOLDED PVC 45P, COLOR: BLACK  
TERMINALS: BRASS ALLOY
- ALL RELEVANT MATERIALS COMPLY WITH RoHS DIRECTIVE.
- APPROVALS: UL, cUL
- OPERATING TEMPERATURE RANGE: -20° C TO 60° C [-4° F TO 140° F]
- HUMIDITY RANGE: 10-85% RH

P/N Key:



PACKING A: ≤1FT      PACKING B: ≥2FT



THIRD ANGLE PROJECTION
DRAWING IS SUBJECT TO CHANGE WITHOUT NOTICE
CABLE LENGTH TOLERANCES
UNDER 6 FT [1.83M] ± 1.0 IN [25mm]
6 FT [1.83M] AND LONGER ± 2.0 IN [50mm]
DO NOT SCALE DRAWING
SHEET NO. 1 OF 1

 <b>stewart</b> CONNECTOR a bel group	11118 Susquehanna Trail South Glen Rock, PA 17327-9199 (717) 235-7512 <a href="http://www.stewartconnector.com">http://www.stewartconnector.com</a>	
	<b>TITLE:</b> POWER SUPPLY CORD, LOW-PROFILE, NEMA 5-15P TO NEMA 5-15R	
THIS DRAWING AND THE SUBJECT MATTER SHOWN THEREON ARE CONFIDENTIAL AND THE PROPRIETARY PROPERTY OF STEWART CONNECTOR AND SHALL NOT BE REPRODUCED, COPIED, OR USED IN ANY MANNER WITHOUT PRIOR WRITTEN CONSENT OF STEWART CONNECTOR. ONE OR MORE U.S. PATENTS MAY APPLY TO THIS PRODUCT. FOR DETAILS, PLEASE VISIT: <a href="http://BELFUSE.COM/STEWART/STEWART_PATENTS/">HTTP://BELFUSE.COM/STEWART/STEWART_PATENTS/</a>	<b>DRN BY:</b> KAW	<b>DATE:</b> 02/16/26
	<b>APPD BY:</b> GWL	<b>DATE:</b> 02/27/26
	<b>DWG NO.:</b> CT999337	<b>REV.:</b> A0