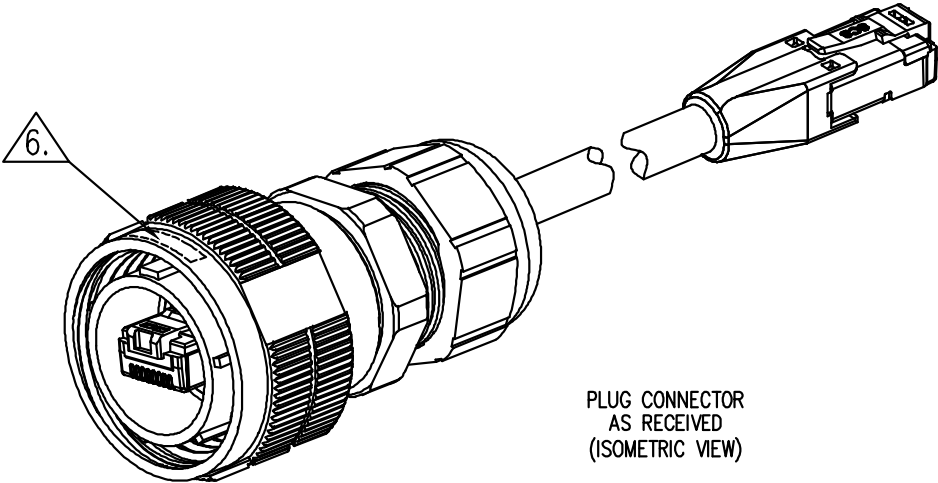
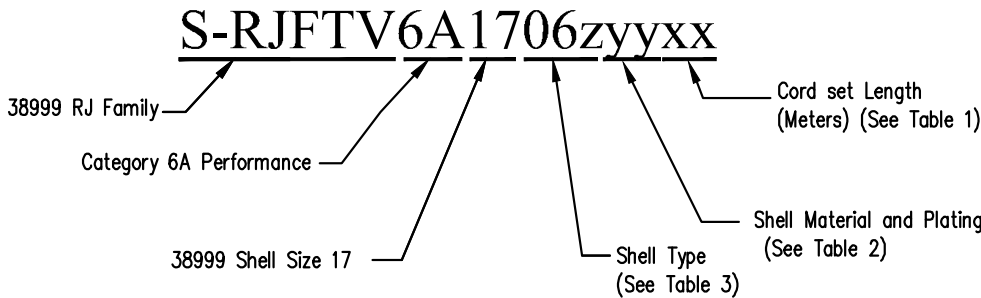


PLUG CONNECTOR, WITH CORD SET AND SEALING GLAND



PLUG CONNECTOR  
AS RECEIVED  
(ISOMETRIC VIEW)

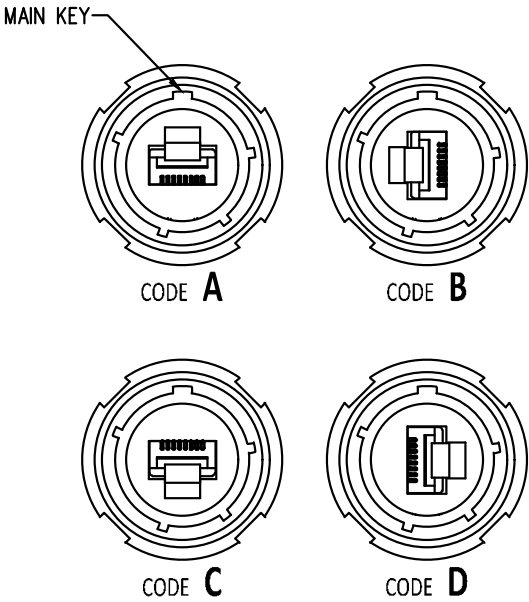
PART NUMBER KEY



| TABLE 1 – CORD SET LENGTH (xx)                       |                                   |
|--|-----------------------------------|
| Part Number  | Standard Length (Meters) [Inches] |
| 03   | 0.3 [11.8]                        |
| 05   | 0.5 [19.7]                        |
| 10   | 1.0 [39.4]                        |
| 15   | 1.5 [59.1]                        |
| For lengths not shown follow part number key format. |                                   |

| TABLE 2 – SHELL MATERIAL AND PLATING (yy) |  |
|---|--|
| Part Number                               | Description                                      |
| G   | Aluminum shell, Olive drab cadmium plating       |
| N   | Aluminum shell, Nickel plating (RoHS)            |
| Q   | Aluminum shell, Black zinc nickel plating (RoHS) |
| W   | Aluminum shell, Gray nickel-PTFE plating (RoHS)  |
| SS  | Stainless steel, Passivated (RoHS)               |
| BZ  | Marine bronze (RoHS)                             |

| TABLE 3 – SHELL TYPE (06z) |                               |
|----------------------------|-------------------------------|
| Part Number                | Description                   |
| 06P                        | Plug, straight, Plastic gland |
| 06M                        | Plug, straight, Metal gland   |



POLARIZATION CODES  
USE REMOVAL TOOL P/N 2940262-01  
IF RECODING IS NECESSARY

- NOTES:
- CONNECTOR MATERIALS:  
SHELL MATERIAL AND PLATING: SEE PART NUMBER KEY AND TABLES  
RJ45 PLUG LOCATOR: THERMOPLASTIC UL94 V-0  
PLUG BODY: CLEAR POLYCARBONATE, UL 94-V0  
LOAD BAR: CLEAR POLYCARBONATE, UL 94-V0  
BOOT: BLACK POLYCARBONATE, UL 94-V0  
CONTACTS: COPPER ALLOY, SELECTIVE GOLD PLATING  
SHIELD: COPPER ALLOY, NICKEL PLATE  
GLAND ASSEMBLY: METAL OR THERMOPLASTIC HOUSING WITH CHLOROPRENE RUBBER SEAL
  - DESIGNED FOR CATEGORY 6A CHANNEL PERFORMANCE (CHANNELS UP TO 50M LONG USING ONLY 1 COUPLER) FOR RJ45 PRODUCT SPECIFICATIONS SEE PR040-01.
  - RJ45 INTERFACE DIMENSIONS AND TOLERANCES COMPLY WITH TIA-1096 STANDARD.
  - CIRCULAR SHELL COMPLIES WITH MIL-DTL-38999.
  - STANDARD PRODUCT IS SUPPLIED ASSEMBLED TO POLARIZATION CODE A
  - CONNECTOR ASSEMBLY IS MARKED WITH DATE CODE IN THIS AREA.
  - CIRCULAR PLUG CONNECTOR IS SUPPLIED WITH DUST CAP.
  - OPERATING TEMPERATURE: -40°C TO +85°C.

THIRD ANGLE PROJECTION

DO NOT SCALE DRAWING  
DRAWING IS SUBJECT TO  
CHANGE WITHOUT NOTICE

TOLERANCES UNLESS  
OTHERWISE SPECIFIED

.X ± .1 [2.54]  
.XX ± .01 [0.254]  
.XXX ± .005 [0.127]  
ANGULAR ± 1°

DIMENSIONS: INCHES [METRIC]

SHEET NO. 1 OF 3

1118 Susquehanna Trail South  
Glen Rock, PA 17327-9199  
(717) 235-7512  
<http://www.stewartconnector.com>

TITLE: CATEGORY 6A IP68 PLUG FOR RJ45 CABLE ASSEMBLY  
SIZE 17 38999, WITH SEALING GLAND

|                  |               |
|------------------|---------------|
| DRN BY: ARC      | DATE 05-19-23 |
| APPD BY: KAW     | DATE 05-22-23 |
| DWG NO. CT600203 | REV. A2       |

THIS DRAWING AND THE SUBJECT MATTER SHOWN THEREON ARE CONFIDENTIAL AND THE PROPRIETARY PROPERTY OF STEWART CONNECTOR AND SHALL NOT BE REPRODUCED, COPIED, OR USED IN ANY MANNER WITHOUT PRIOR WRITTEN CONSENT OF STEWART CONNECTOR. ONE OR MORE U.S. PATENTS MAY APPLY TO THIS PRODUCT. FOR DETAILS, PLEASE VISIT: [HTTP://BELFUSE.COM/STEWART/STEWART\\_PATENTS/](http://BELFUSE.COM/STEWART/STEWART_PATENTS/)

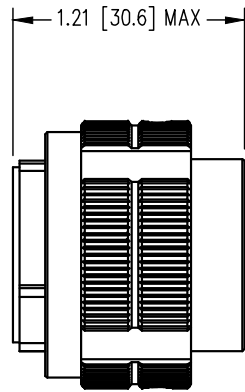
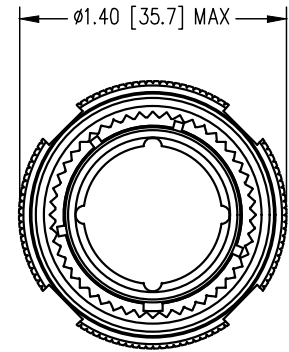
| DATE     | REV | ECN   | APP'D. BY |
|----------|-----|-------|-----------|
| 05-22-23 | A0  | 12182 | KAW       |
| 10-30-23 | A1  | 12267 | KAW       |
| 11-22-23 | A2  | 12275 | KAW       |

B

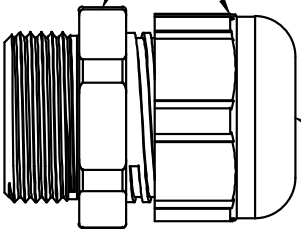
A

B

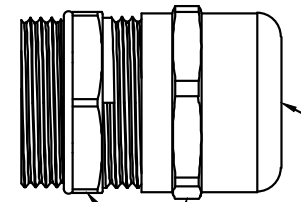
A



1 1/16 [27 mm]  
NOMINAL HEX

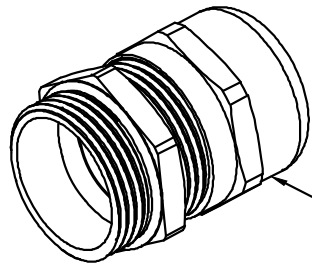


PLASTIC  
GLAND  
ASSEMBLY



METAL  
GLAND  
ASSEMBLY

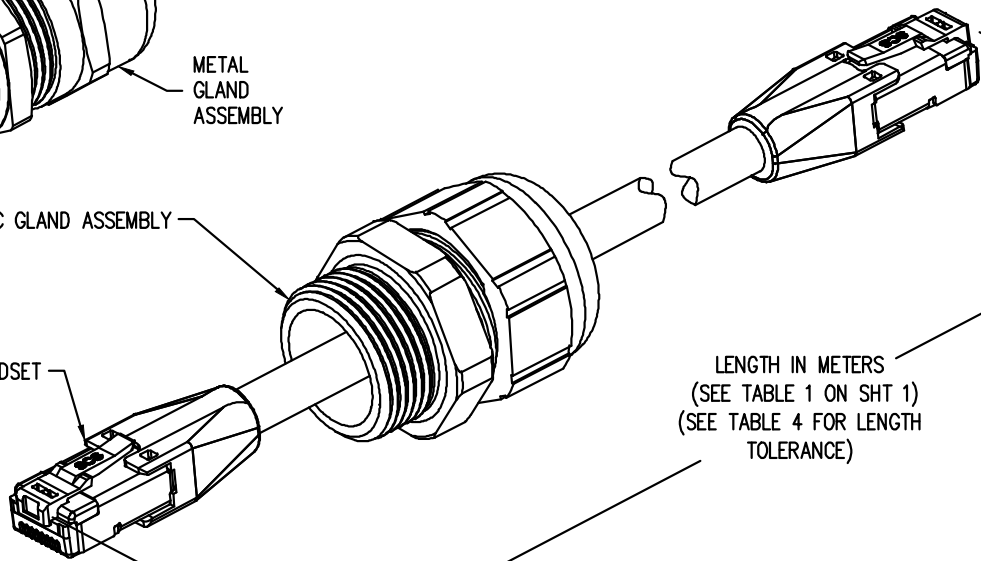
15/16 [24 mm]  
NOMINAL HEX



METAL  
GLAND  
ASSEMBLY

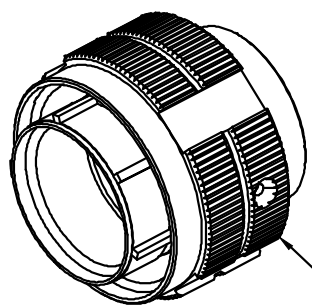
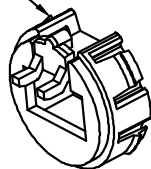
PLASTIC GLAND ASSEMBLY

RJ45 CORDSET



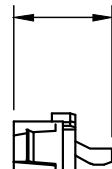
PLUG CONNECTOR  
AS RECEIVED  
(EXPLODED VIEW)

RJ45 PLUG LOCATOR

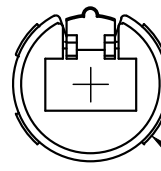


PLUG SHELL  
ASSEMBLY

.516 [13.11]



.322 [8.18]



Ø.847 [Ø21.52]

TABLE 4 - CORD SET LENGTH TOLERANCE

| Cable Length = Meters [inches] | Tolerance = MM [inches] |
|--------------------------------|-------------------------|
| 0.5 [19.7] TO 2.5 [98.4]       | +100 [3.90] / -0 [0.00] |
| 3.0 [118] TO 10 [394]          | +150 [5.91] / -0 [0.00] |

NOTES:

1. SEALING GLAND RECOMMENDED TORQUE VALUES:

PLASTIC GLAND:

GLAND TO SHELL = 44.3 In-Lbs [5 Nm]

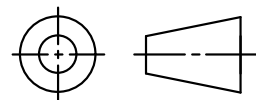
GLAND TO CABLE = 29.2 In-Lbs [3.3 Nm]

METAL GLAND:

GLAND TO SHELL = 66.4 In-Lbs [7.5 Nm]

GLAND TO CABLE = 44.3 In-Lbs [5 Nm]

THIRD ANGLE PROJECTION



DO NOT SCALE DRAWING  
DRAWING IS SUBJECT TO  
CHANGE WITHOUT NOTICE

DIMENSIONS: INCHES [METRIC]

SHEET NO. 2 OF 3

TOLERANCES UNLESS  
OTHERWISE SPECIFIED  
.X ± .1 [2.54]  
.XX ± .01 [0.254]  
.XXX ± .005 [0.127]  
ANGULAR ± 1°



11118 Susquehanna Trail South  
Glen Rock, PA 17327-9199  
(717) 235-7512

<http://www.stewartconnector.com>

TITLE: CATEGORY 6A IP68 PLUG FOR RJ45 CABLE ASSEMBLY  
SIZE 17 38999, WITH SEALING GLAND

THIS DRAWING AND THE SUBJECT MATTER SHOWN THEREON  
ARE CONFIDENTIAL AND THE PROPRIETARY PROPERTY OF  
STEWART CONNECTOR AND SHALL NOT BE REPRODUCED,  
COPIED, OR USED IN ANY MANNER WITHOUT PRIOR WRITTEN  
CONSENT OF STEWART CONNECTOR. ONE OR MORE U.S. PATENTS  
MAY APPLY TO THIS PRODUCT. FOR DETAILS, PLEASE  
VISIT: [HTTP://BELFUSE.COM/STEWART/STEWART\\_PATENTS/](http://BELFUSE.COM/STEWART/STEWART_PATENTS/)

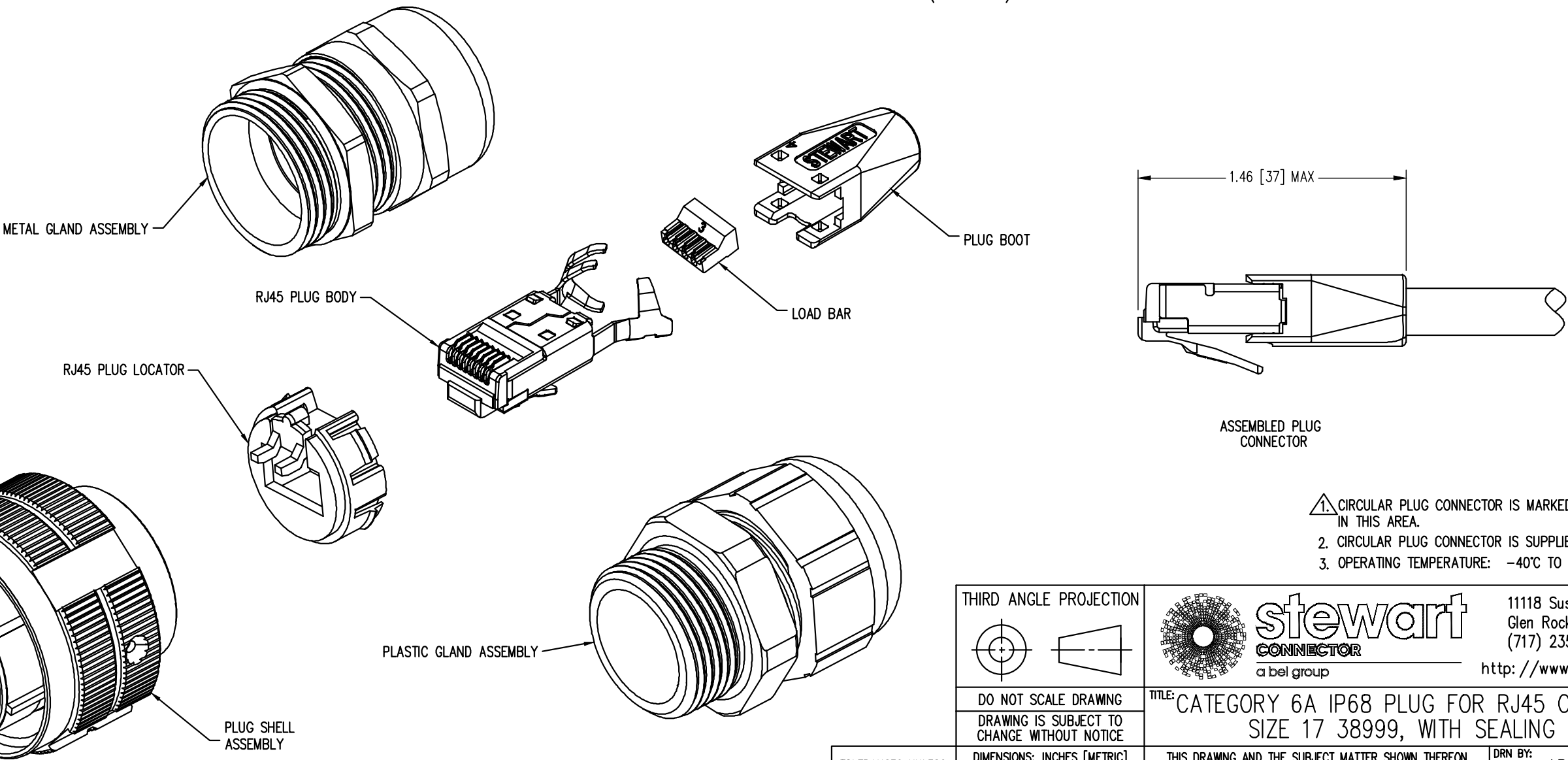
|          |          |      |          |
|----------|----------|------|----------|
| DRN BY:  | ARC      | DATE | 05-19-23 |
| APPD BY: | KAW      | DATE | 05-22-23 |
| DWG NO.  | CT600203 | REV. | A2       |

PLUG CONNECTOR KIT, WITH UNTERMINATED RJ45 PLUG

PART NUMBER KEY

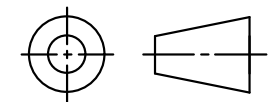
S-RJFTV6A1706zyy

- 38999 RJ Family  
Category 6A Performance  
38999 Shell Size 17  
Shell Material and Plating (See Table 2)  
Shell Type (See Table 3)



1. CIRCULAR PLUG CONNECTOR IS MARKED WITH DATE CODE IN THIS AREA.  
2. CIRCULAR PLUG CONNECTOR IS SUPPLIED WITH DUST CAP(S).  
3. OPERATING TEMPERATURE: -40°C TO +85°C.

THIRD ANGLE PROJECTION

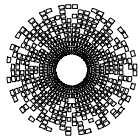


DO NOT SCALE DRAWING  
DRAWING IS SUBJECT TO  
CHANGE WITHOUT NOTICE

DIMENSIONS: INCHES [METRIC]

SHEET NO. 3 OF 3

TOLERANCES UNLESS  
OTHERWISE SPECIFIED  
.X ± .1 [2.54]  
.XX ± .01 [0.254]  
.XXX ± .005 [0.127]  
ANGULAR ± 1°



**stewart**  
CONNECTOR  
a bel group

11118 Susquehanna Trail South  
Glen Rock, PA 17327-9199  
(717) 235-7512  
<http://www.stewartconnector.com>

TITLE: CATEGORY 6A IP68 PLUG FOR RJ45 CABLE ASSEMBLY  
SIZE 17 38999, WITH SEALING GLAND

THIS DRAWING AND THE SUBJECT MATTER SHOWN THEREON  
ARE CONFIDENTIAL AND THE PROPRIETARY PROPERTY OF  
STEWART CONNECTOR AND SHALL NOT BE REPRODUCED,  
COPIED, OR USED IN ANY MANNER WITHOUT PRIOR WRITTEN  
CONSENT OF STEWART CONNECTOR. ONE OR MORE U.S. PATENTS  
MAY APPLY TO THIS PRODUCT. FOR DETAILS, PLEASE  
VISIT: [HTTP://BELFUSE.COM/STEWART/STEWART\\_PATENTS/](http://BELFUSE.COM/STEWART/STEWART_PATENTS/)

|          |          |      |          |
|----------|----------|------|----------|
| DRN BY:  | ARC      | DATE | 05-19-23 |
| APPD BY: | KAW      | DATE | 05-22-23 |
| DWG NO.  | CT600203 | REV. | A2       |