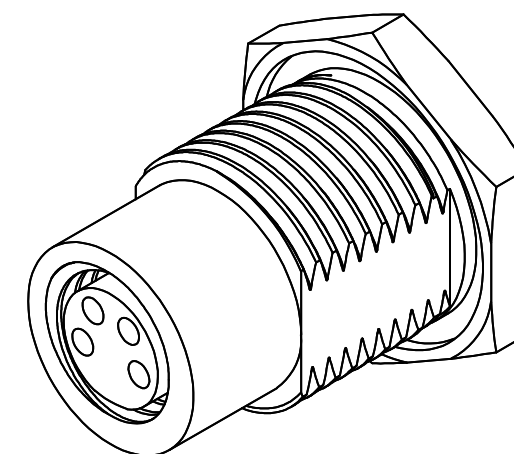
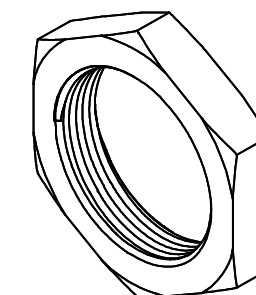
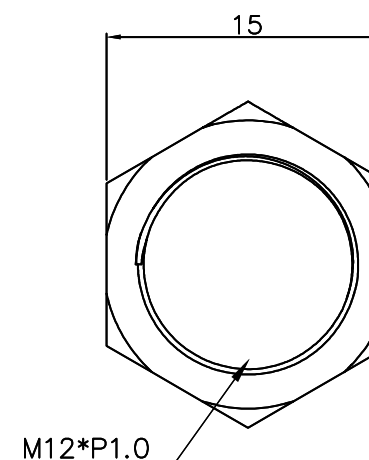
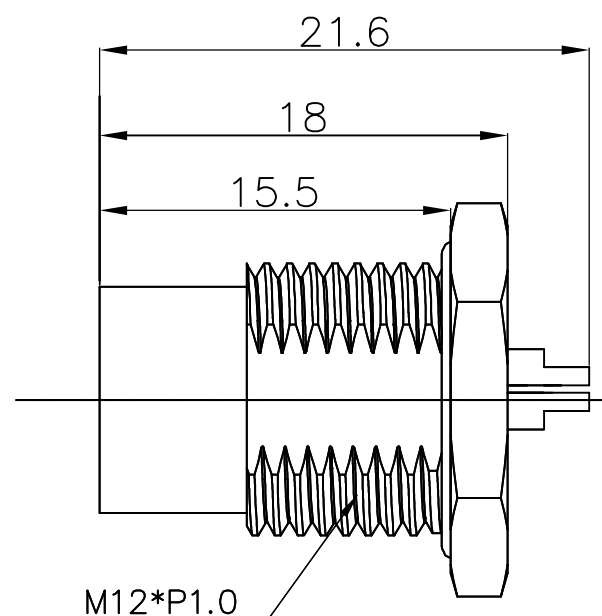
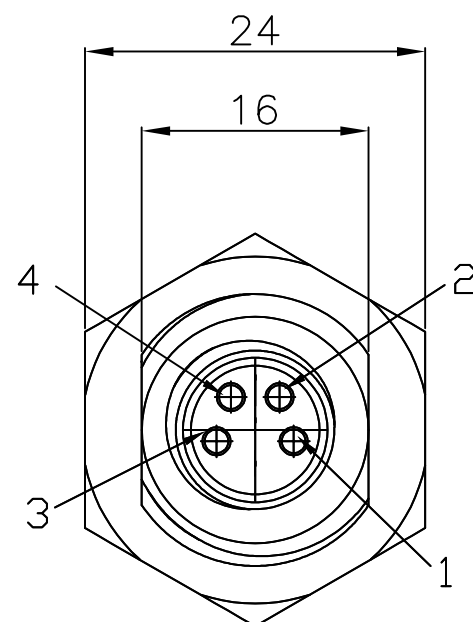


Panel Cut-out



Notes:

- 1.Current Rating: 3A
- 2.Rated voltage: 50V AC/60V DC
- 3.Insulation Resistance: 100 Megaohm min.

Material:

- 1.Plastic Housing: Engineering Plastic
- 2.Coupling Nut: M8*P1.0 Brass With Nickel Plated
- 3.Screw Nut: Brass With Nickel Plated
- 4.Contacts: Copper Alloy With Gold Plating Over Nickel In Contact
- 5.O-RING: NBR Rubber Black Color
- 6.O-RING: EPDM Rubber Red Color

Color : Green

2.Coupling Nut: M8*P1.0 Brass With Nickel Plated

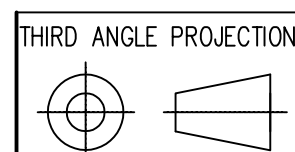
3.Screw Nut: Brass With Nickel Plated

4.Contacts: Copper Alloy With Gold Plating Over Nickel In Contact

5.O-RING: NBR Rubber Black Color

6.O-RING: EPDM Rubber Red Color

TOLERANCES UNLESS OTHERWISE SPECIFIED	
X.XXX	±.10
X.XX	±.25
X.X	±.38
X	±.50
ANG	±3°



DO NOT SCALE DRAWING
DRAWING IS SUBJECT TO
CHANGE WITHOUT NOTICE

DIMENSIONS: METRIC
SHEET NO. 1 OF 1



TITLE
M8 A-CODED 4PIN FEMALE PNL MOUNT CONNECTOR WITH
SOLDER CUPS

THIS DRAWING AND THE SUBJECT MATTER SHOWN THEREON
ARE CONFIDENTIAL AND THE PROPRIETARY PROPERTY OF
STEWART CONNECTOR AND SHALL NOT BE REPRODUCED,
COPIED, OR USED IN ANY MANNER WITHOUT PRIOR WRITTEN
CONSENT OF STEWART CONNECTOR. ONE OR MORE U.S. PATENTS
MAY APPLY TO THIS PRODUCT. FOR DETAILS, PLEASE
VISIT: [HTTP://BELFUSE.COM/STEWART/STEWART_PATENTS/](http://BELFUSE.COM/STEWART/STEWART_PATENTS/)

11118 Susquehanna Trail South
Glen Rock, PA 17327-9199
(717) 235-7512
<http://www.stewartconnector.com>

DRW BY:	ARC	DATE	11/21/23
APPD BY:	GWL	DATE	11/21/23
DWG NO.	CT120031	REV.	A0

SS-12800-003

PART NUMBER

11118 Susquehanna Trail South
Glen Rock, PA 17327-9199
(717) 235-7512
<http://www.stewartconnector.com>



TITLE
M8 A-CODED 4PIN FEMALE PNL MOUNT CONNECTOR WITH
SOLDER CUPS

THIS DRAWING AND THE SUBJECT MATTER SHOWN THEREON
ARE CONFIDENTIAL AND THE PROPRIETARY PROPERTY OF
STEWART CONNECTOR AND SHALL NOT BE REPRODUCED,
COPIED, OR USED IN ANY MANNER WITHOUT PRIOR WRITTEN
CONSENT OF STEWART CONNECTOR. ONE OR MORE U.S. PATENTS
MAY APPLY TO THIS PRODUCT. FOR DETAILS, PLEASE
VISIT: [HTTP://BELFUSE.COM/STEWART/STEWART_PATENTS/](http://BELFUSE.COM/STEWART/STEWART_PATENTS/)

DRW BY:	ARC	DATE	11/21/23
APPD BY:	GWL	DATE	11/21/23
DWG NO.	CT120031	REV.	A0