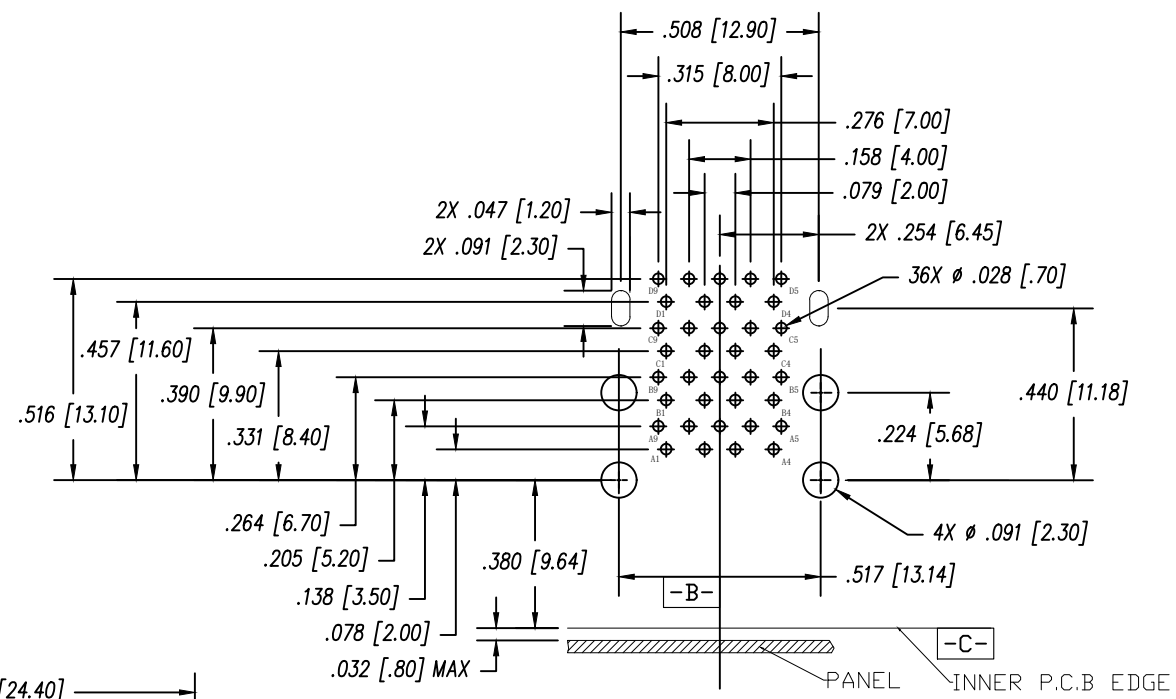
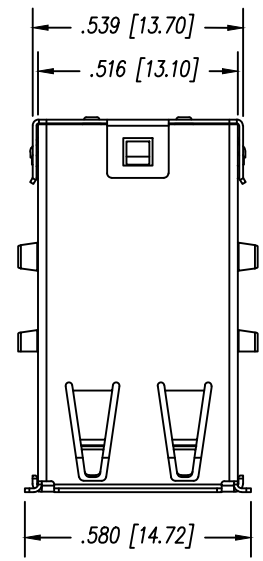


DATE	REV	ECN	APP'D BY
8/21/2023	A0	12249	GL

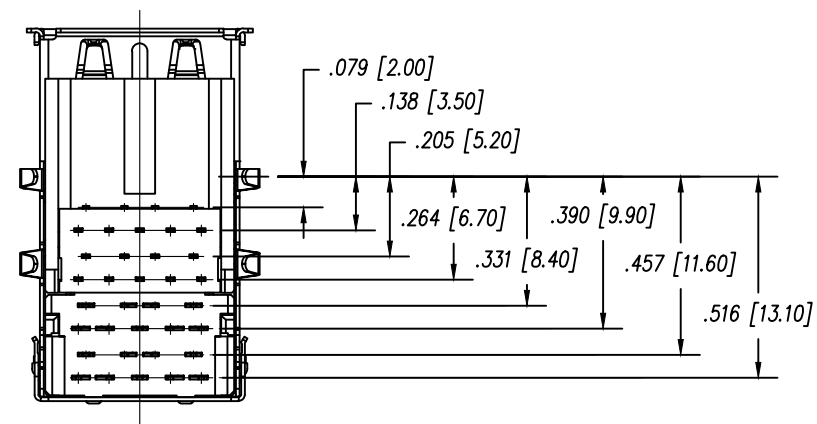
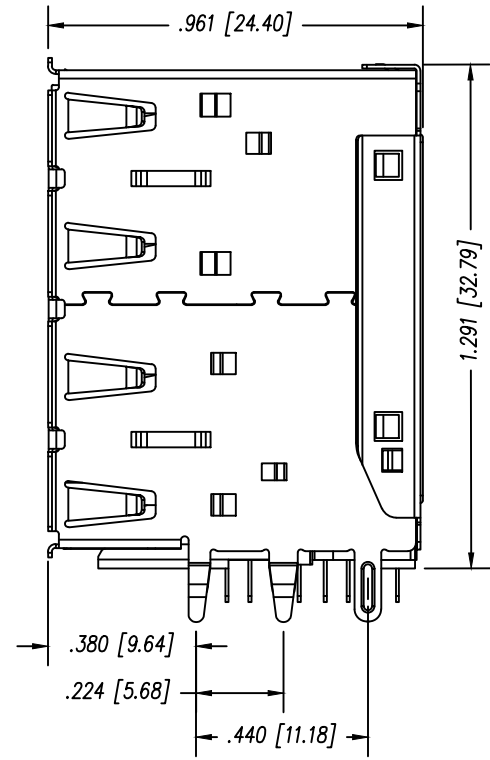
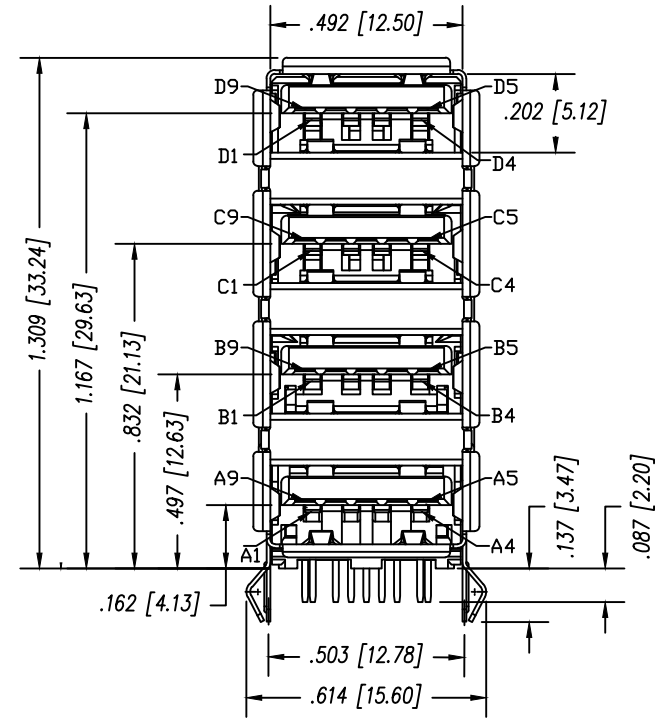


RECOMMENDED P.C.B LAYOUT (THICKNESS = .063 [1.60])  
(GENERAL TOLERANCE: ± .002 [.05])

NOTES:

- MATERIAL:**  
HOUSING: PA66, UL94V-0, COLOR: BLUE (PANTONE 300C)  
CONTACTS: PINS(1-4): PHOSPHOR BRONZE; PINS(5-9): BRASS  
GOLD PLATING IN MATING AREA  
80µ" MIN. MATTE-TIN PLATED ON SOLDER TAILS  
50µ" MIN. NICKEL UNDERPLATED OVERALL  
SHELL: SUS430  
60µ" MIN. MATTE-TIN PLATING ON SOLDER TAILS  
OVER 30µ" MIN. NICKEL  
MIDDLE BULLET: SK7  
50µ" MIN. NICKEL PLATED OVERALL
- MECHANICAL:**  
MATING: 35N MAX.  
WITHDRAWAL: 10N MIN.  
DURABILITY: 1,500 INSERTION CYCLES
- ELECTRICAL:**  
CURRENT: 1.8A MAX. FOR PIN-1 AND PIN-4, 0.25A FOR ALL OTHER PINS  
VOLTAGE: 30V AC (RMS)  
WITHSTANDING VOLTAGE: 100V AC  
CONTACT RESISTANCE:  
30 mΩ (MAX.) INITIAL FOR PIN-1 AND PIN-4  
50 mΩ (MAX.) INITIAL FOR ALL OTHER CONTACTS  
MAX. CHANGE OF +10 mΩ AFTER ENVIRONMENTAL STRESSES  
MEASURE AT 20 mV (MAX.) OPEN CIRCUIT AT 100 mA  
INSULATION RESISTANCE: 100 MΩ MIN.
- ENVIRONMENTAL:**  
TEMPERATURE RANGE: -55°C ~ +85°C

SS-52000-005	15µ" MIN. [0.381µm]
PART NUMBER	CONTACT PLATING IN MATING AREA



TOLERANCE TABLE (TOLERANCES UNLESS OTHERWISE SPECIFIED)	
DIMENSION	TOLERANCE
X.XX	±.012 [.3]
X.XXX	±.010 [.25]
X.XXXX	±.002 [.050]
ANGLES	±1°

THIRD ANGLE PROJECTION

DO NOT SCALE DRAWING  
DRAWING IS SUBJECT TO CHANGE WITHOUT NOTICE

DIMENSIONS: INCHES [METRIC]

UNLESS OTHERWISE SPECIFIED SEE TOLERANCE TABLE FOR VALUES

SHEET NO. 1 OF 1

**stewart**  
CONNECTOR  
a bel group

1118 Susquehanna Trail South  
Glen Rock, PA 17327-9199  
(717) 235-7512  
<http://www.stewartconnector.com>

TITLE: 4 PORT USB 3.0 STACK JACK

THIS DRAWING AND THE SUBJECT MATTER SHOWN THEREON ARE CONFIDENTIAL AND THE PROPRIETARY PROPERTY OF STEWART CONNECTOR AND SHALL NOT BE REPRODUCED, COPIED, OR USED IN ANY MANNER WITHOUT PRIOR WRITTEN CONSENT OF STEWART CONNECTOR. THE SUBJECT MATTER MAY BE PATENTED OR A PATENT MAY BE PENDING.

DRN BY: BR	DATE: 8-21-23
CHK'D BY: JE	DATE: 8-29-23
DWG NO. CT520016	REV. A0