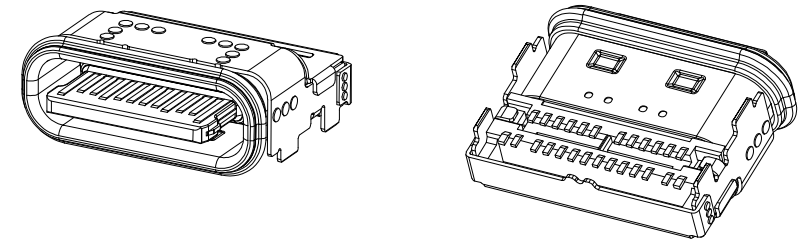
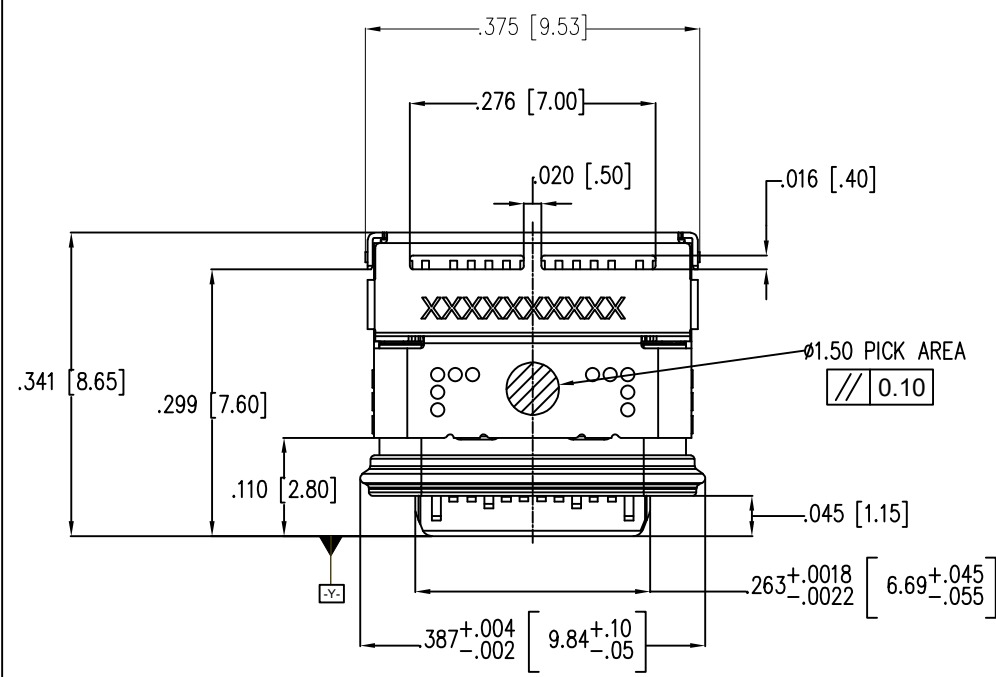
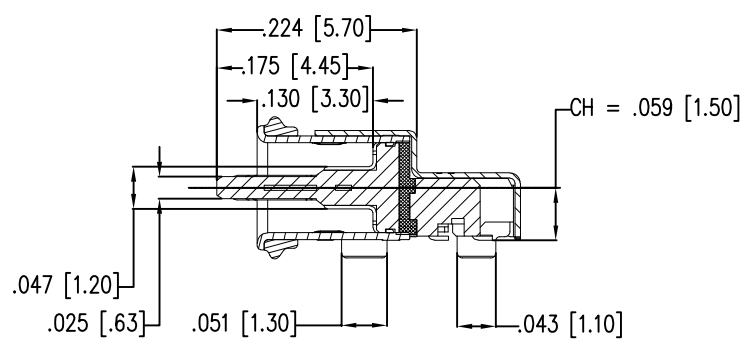
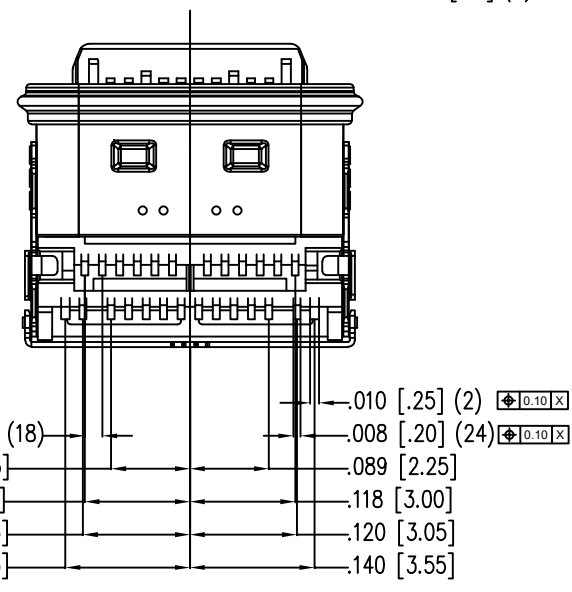
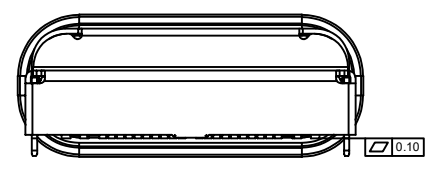
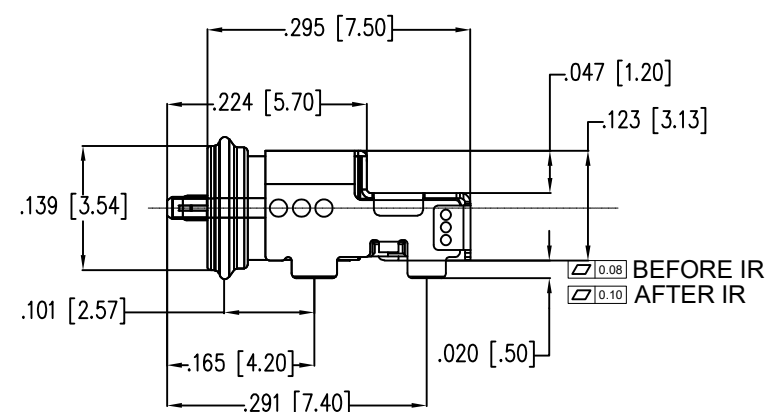
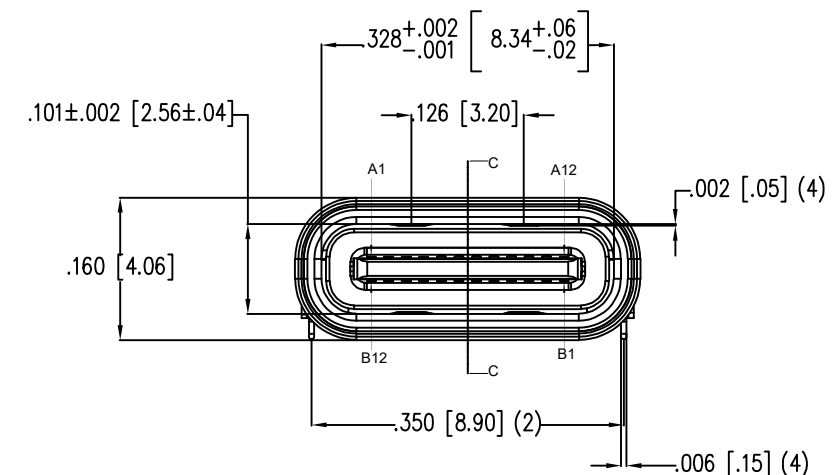


| DATE     | REV | ECN   | APP'D. BY |
|----------|-----|-------|-----------|
| 3/4/2026 | A0  | 12644 | GWL       |



- Specifications:**
- Electrical Performance,
    - Current Rating: 5 Amps. For Total VBUS/GND Pins; 0.5Amps For CC Pin, 0.25 Amps. For All Other Contact.
    - Voltage Rating: 5 V DC/AC (Rms. Max)
    - Contact Resistance: 40mΩ Max Initial. 50mΩ Max After Test
    - Dielectric Withstanding Voltage: 100V AV
    - Insulation Resistance: 100mΩ Min
  - Mechanical Performance,
    - Insertion Force: 5~20N.
    - Extraction Force: 8~20N.
    - Durability: 10000 Cycles.
  - Environmental Performance:
    - Operating Temperature: -25°C~+85°C.
  - IR Reflow:
    - The Peak Temperature On The Board Shall Be Maintained For 10 Seconds At 260°C.
  - Salt Spray: 48H
  - Contact Area: Au 15u", Solder Tails: Au 5u"



| Description | QTY   | Material                      | Remarks   |
|-------------|-------|-------------------------------|---|
| LIM SEAL    | 1PCS  | CHN-LIMS Silicone             | BLACK   |
| Outer Shell | 1PCS  | Stainless Steel SUS316        | SOLDER NICKEL: NI PLATE   |
| Main SHELL  | 1PCS  | Stainless Steel SUS304        | NI PLATED OR CLEANING   |
| Small SHELL | 1PCS  | Stainless Steel SUS304        | NI PLATED OR CLEANING   |
| Contact     | 24PCS | Copper Alloy C7025            | Au 15u" Plated In Contact Area<br>5u" Plated In Solder Area;<br>Nickel 50u" Min Under Plating Over All. |
| MID PLATE   | 1PCS  | Stainless Steel SUS301        | NI PLATED   |
| Housing     | 1PCS  | High Temperature Plastic PA9T | UL94V-0 Black   |

|                                |              |
|--------------------------------|--------------|
| 15 MICRO-INCHES [0.381um]      | SS-52400-014 |
| CONTACT PLATING IN MATING AREA | PART NUMBER  |

THIRD ANGLE PROJECTION

DRAWING IS SUBJECT TO CHANGE WITHOUT NOTICE

UNLESS OTHERWISE SPECIFIED DIMENSIONS INCHES [MM]

TOLERANCES ARE:

ANGLES ± 3°

.XX [.X] ±.012" [±0.30]

.XXX [.XX] ±.010" [±0.25]

.XXXX [.XXX] ±.004" [±0.10]

DO NOT SCALE DRAWING

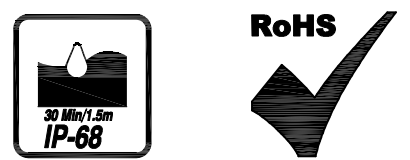
SHEET NO. 1 OF 3

1118 Susquehanna Trail South  
Glen Rock, PA 17327-9199  
(717) 235-7512  
<http://www.stewartconnector.com>

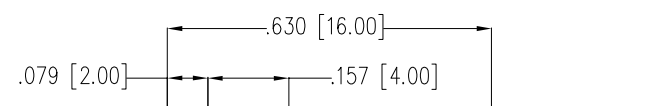
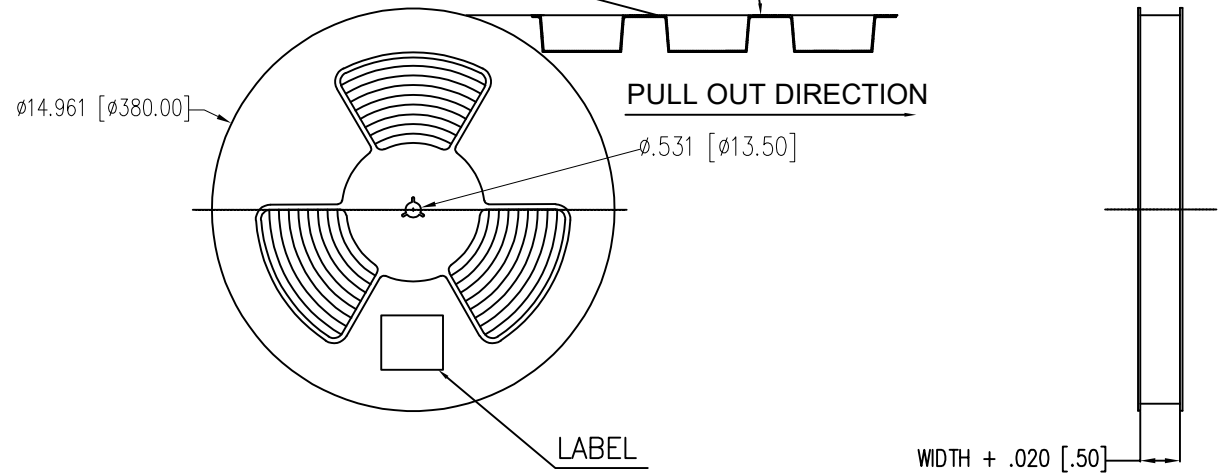
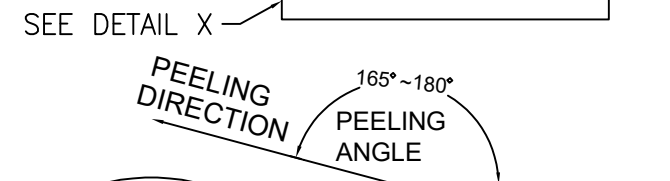
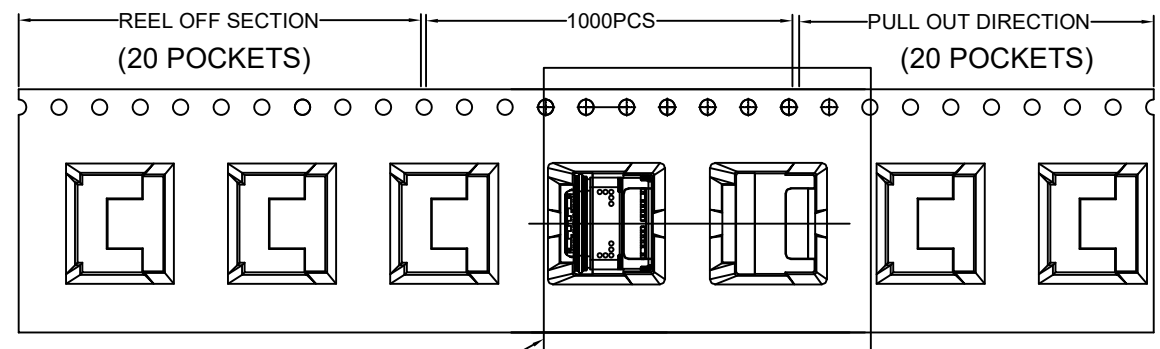
TITLE: USB 3.0 Type-C Right Angle Receptacle, SMT, IP68, 15u"

|                  |                |
|------------------|----------------|
| DRN BY: DDD      | DATE: 3/4/2026 |
| APPD BY: GWL     | DATE: 3/4/2026 |
| DWG NO. CT520023 | REV. A0        |

THIS DRAWING AND THE SUBJECT MATTER SHOWN THEREON ARE CONFIDENTIAL AND THE PROPRIETARY PROPERTY OF STEWART CONNECTOR AND SHALL NOT BE REPRODUCED, COPIED, OR USED IN ANY MANNER WITHOUT PRIOR WRITTEN CONSENT OF STEWART CONNECTOR. ONE OR MORE U.S. PATENTS MAY APPLY TO THIS PRODUCT. FOR DETAILS, PLEASE VISIT: [HTTP://BELFUSE.COM/STEWART/STEWART\\_PATENTS/](http://BELFUSE.COM/STEWART/STEWART_PATENTS/)

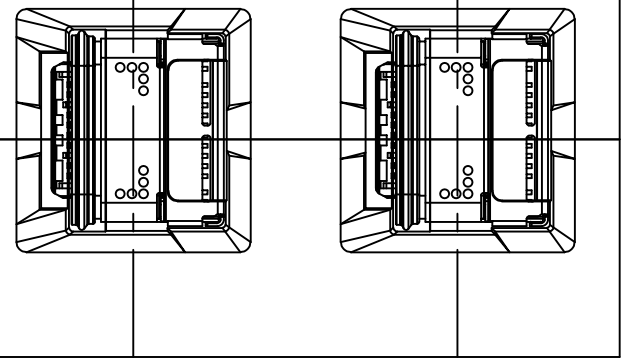




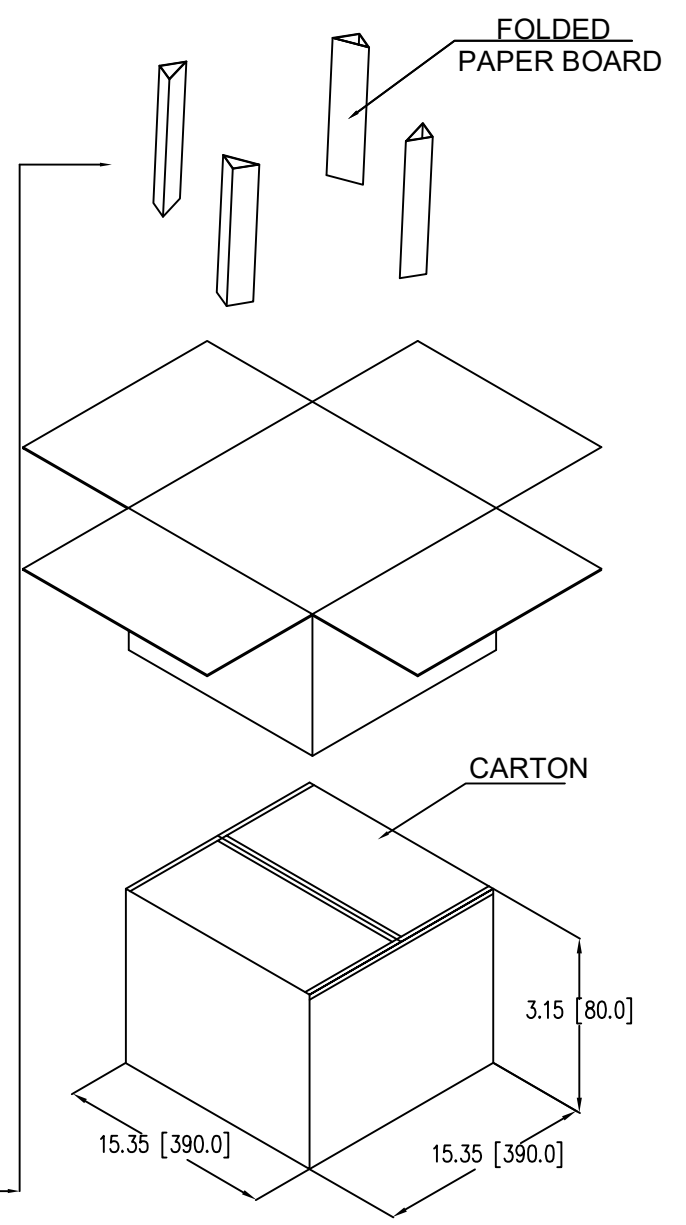
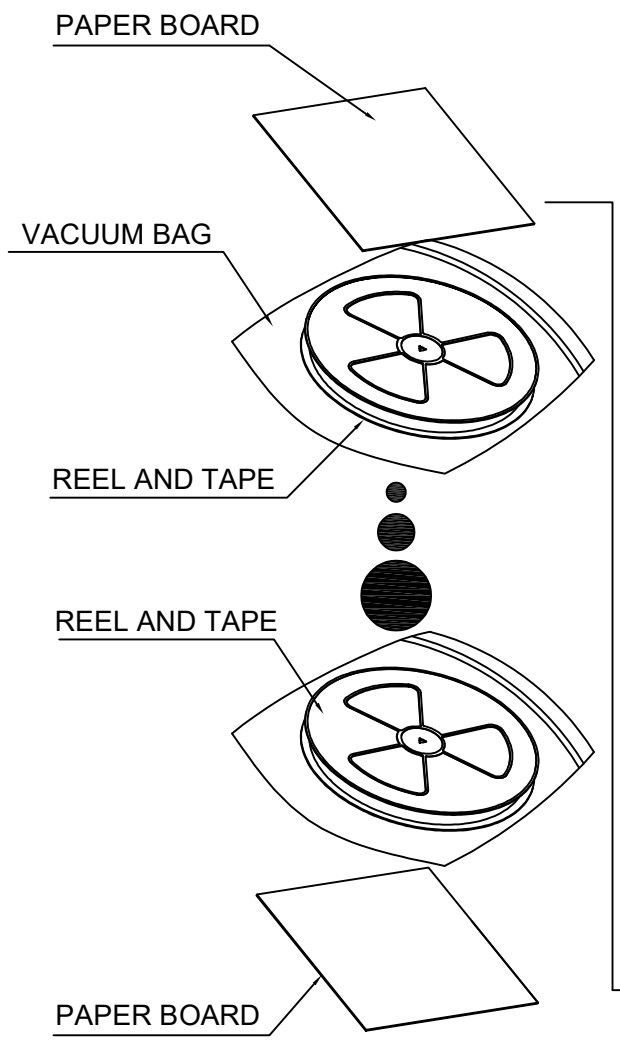


REEL OFF DIRECTION

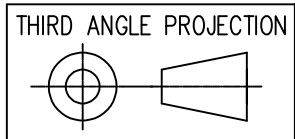
.945 [24.00] WIDTH



PULL OUT DIRECTION



|                 | REEL | CARTON |
|-----------------|------|--------|
| CONNECTOR (PCS) | 1000 | 2000   |



DRAWING IS SUBJECT TO CHANGE WITHOUT NOTICE  
 UNLESS OTHERWISE SPECIFIED DIMENSIONS INCHES [MM]  
 TOLERANCES ARE:  
 ANGLES ± 3°  
 .XX [.X] ±.012" [±0.30]  
 .XXX [.XX] ±.010" [±0.25]  
 .XXXX [.XXX] ±.004" [±0.10]  
 DO NOT SCALE DRAWING

SHEET NO. 3 OF 3



1118 Susquehanna Trail South  
 Glen Rock, PA 17327-9199  
 (717) 235-7512  
<http://www.stewartconnector.com>

TITLE: USB 3.0 Type-C Right Angle Receptacle, SMT, IP68, 15u"

THIS DRAWING AND THE SUBJECT MATTER SHOWN THEREON ARE CONFIDENTIAL AND THE PROPRIETARY PROPERTY OF STEWART CONNECTOR AND SHALL NOT BE REPRODUCED, COPIED, OR USED IN ANY MANNER WITHOUT PRIOR WRITTEN CONSENT OF STEWART CONNECTOR. ONE OR MORE U.S. PATENTS MAY APPLY TO THIS PRODUCT. FOR DETAILS, PLEASE VISIT: [HTTP://BELFUSE.COM/STEWART/STEWART\\_PATENTS/](http://BELFUSE.COM/STEWART/STEWART_PATENTS/)

|                  |               |
|------------------|---------------|
| DRN BY: DDD      | DATE 3/4/2026 |
| APPD BY: GWL     | DATE 3/4/2026 |
| DWG NO. CT520023 | REV. A0       |