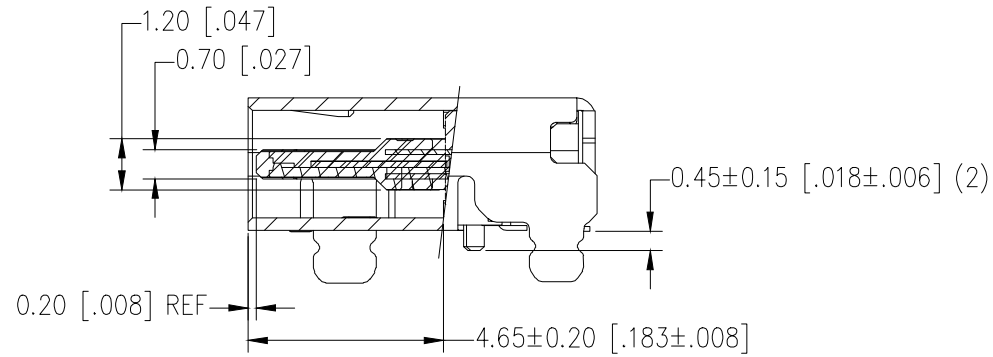
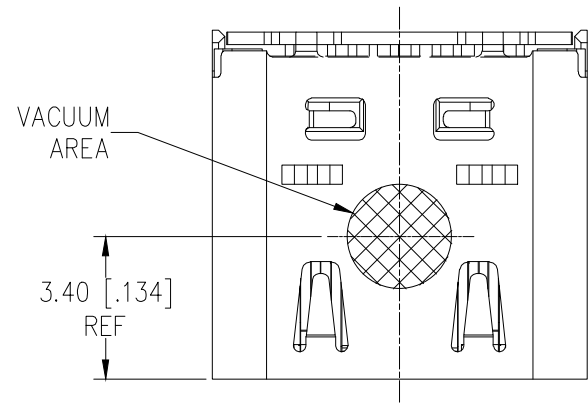


DATE	REV	ECN	APP'D. BY
5/21/2026	A0	12665	GWL



SECTION A-A
PARTIAL
DISPLACED

NOTE:

- MATERIALS
HOUSINGS: PA9T-GF30, BLACK, UL94 V-0
CONTACTS: C18140 COPPER ALLOY
CONTACT PLATING:
UNDERPLATE: 50µin MIN. NICKEL, ALL SURFACES
CONTACT AREA: SEE PART NUMBER TABLE
SOLDER TAILS: GOLD FLASH
SHIELD: 304 STAINLESS STEEL, 30µin MIN. NICKEL PLATING
MID-PLATE: 301 STAINLESS STEEL, 30µin MIN. NICKEL PLATING

2. ELECTRICAL PERFORMANCE

- OPERATING VOLTAGE: 5.0VAC MAX.
- CURRENT RATINGS: 5.0A MAX. FOR TOTAL VBUS/GND PINS
1.25A MAX. FOR CC PINS
0.25A MAX. FOR ALL OTHER CONTACTS
- CONTACT RESISTANCE:
40mΩ MAX. INITIAL, ALL PINS
50mΩ MAX. INITIAL, SHIELD
10mΩ MAX. CHANGE, ALL PINS
- INSULATION RESISTANCE: 100MΩ MIN. @100VDC
- DIELECTRIC WITHSTANDING VOLTAGE: 100VAC FOR 1 MINUTE

3. ENVIRONMENTAL PERFORMANCE

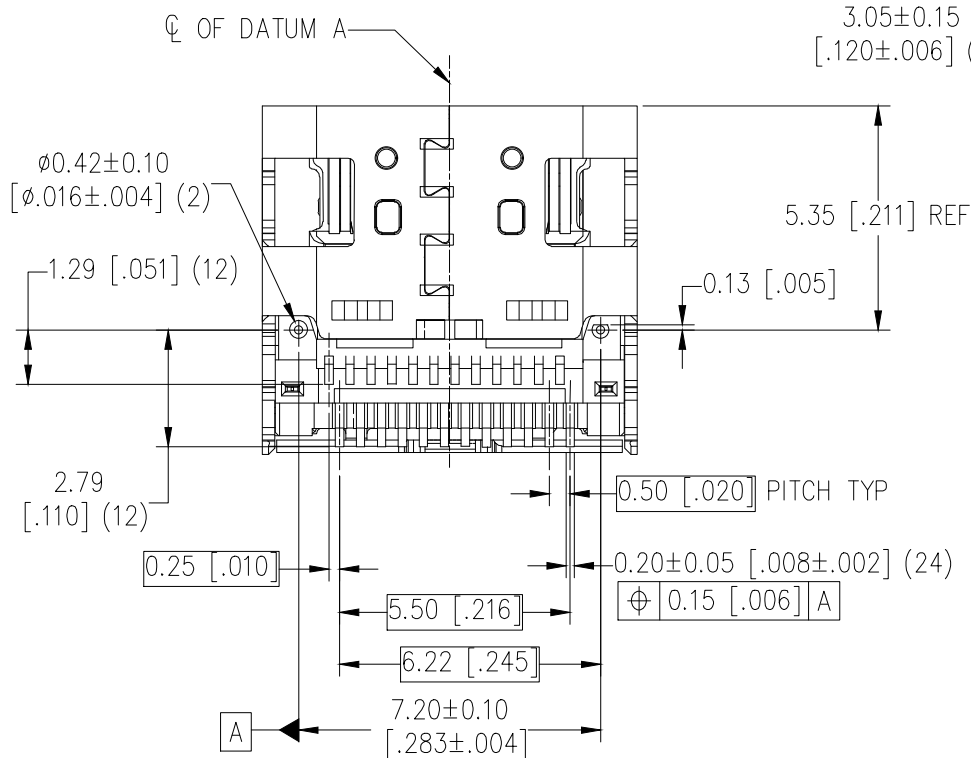
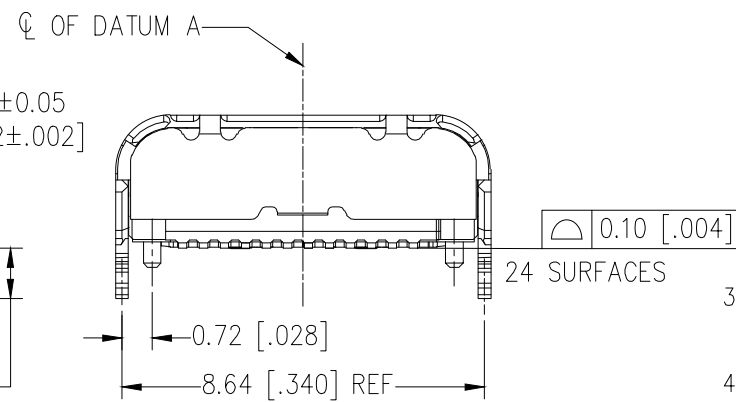
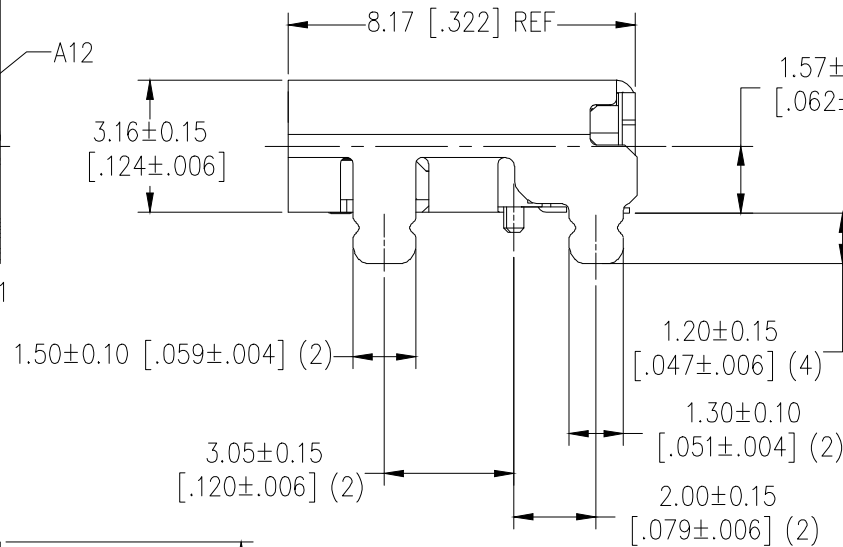
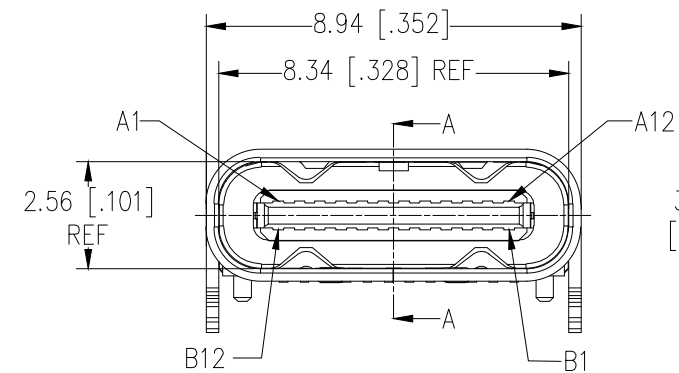
- OPERATING TEMPERATURE RANGE: -40°C TO +85°C

4. MECHANICAL PERFORMANCE

- INSERTION FORCE: 5-20N
- EXTRACTION FORCE: 8-20N
- DURABILITY: 10,000 CYCLES

5. IR REFLOW PROCESS: PEAK TEMPERATURE ON PCB SHALL BE 260°C FOR 10 SECONDS MAX.

6. PACKAGING: TAPE AND REEL



3µIN [0.076µm]	SS-52400-015
CONTACT PLATING IN MATING AREA	PART NUMBER

THIRD ANGLE PROJECTION

DRAWING IS SUBJECT TO CHANGE WITHOUT NOTICE

UNLESS OTHERWISE SPECIFIED DIMENSIONS MM [INCH] TOLERANCES ARE:

X.X [.X] ±0.3 [±0.012"]
 X.XX [.XX] ±0.25 [±0.010"]
 X.XXX [.XXX] ±0.100 [±0.004"]

ANGLES ± 3°
 DO NOT SCALE DRAWING

SHEET NO. 1 OF 3



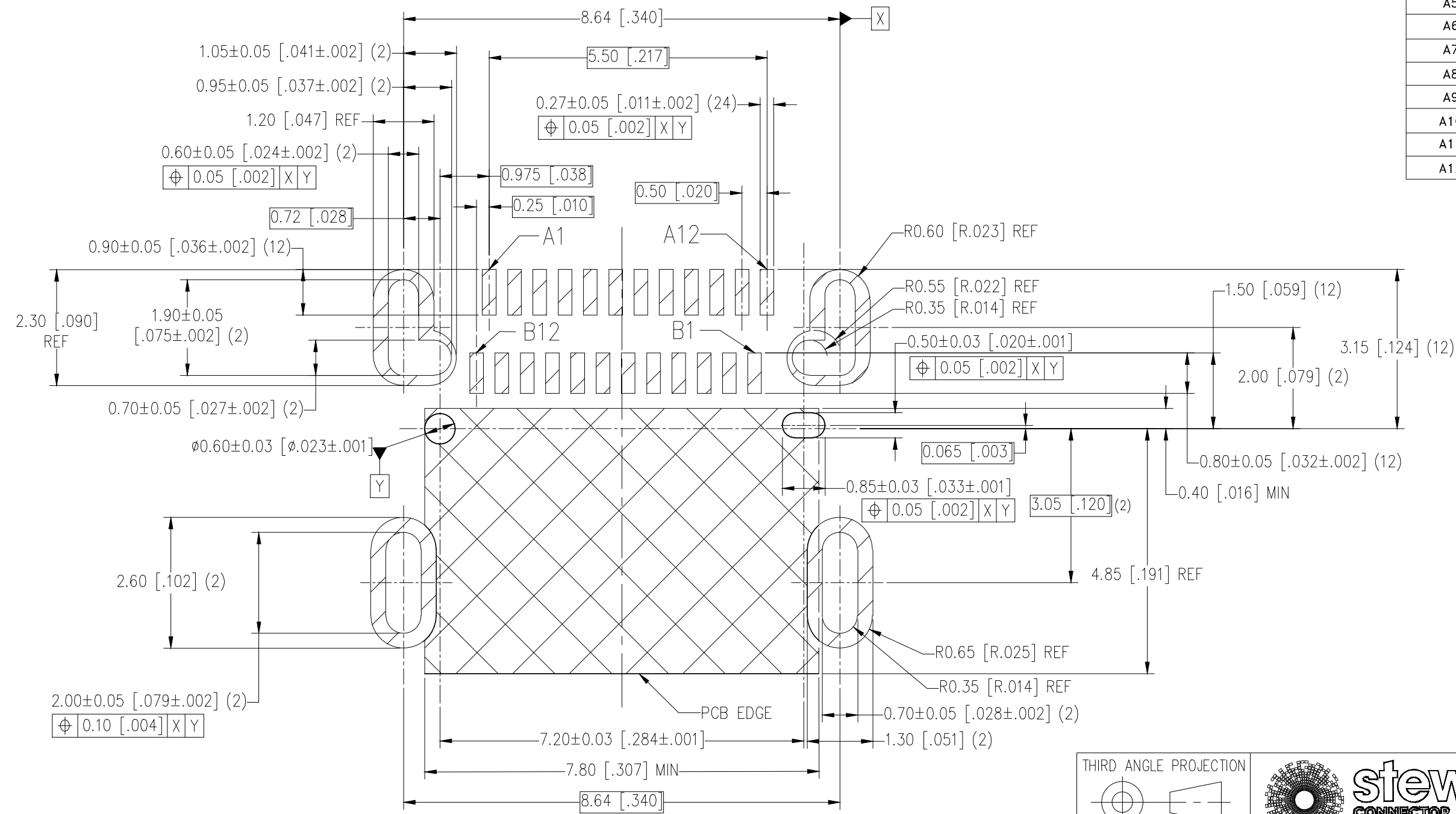
1422 6th Avenue
 York, PA 17403
 (717) 235-7512
<http://www.cinch.com>

TITLE: USB4 TYPE-C RIGHT ANGLE RECEPTACLE, SMT

DRN BY: KAW	DATE: 5/20/2026
APPD BY: GWL	DATE: 5/21/2026
DWG NO: CT520024	REV: A0

THIS DRAWING AND THE SUBJECT MATTER SHOWN THEREON ARE CONFIDENTIAL AND THE PROPRIETARY PROPERTY OF STEWART CONNECTOR AND SHALL NOT BE REPRODUCED, COPIED, OR USED IN ANY MANNER WITHOUT PRIOR WRITTEN CONSENT OF STEWART CONNECTOR. ONE OR MORE U.S. PATENTS MAY APPLY TO THIS PRODUCT. FOR DETAILS, PLEASE VISIT: [HTTP://BELFUSE.COM/STEWART/STEWART_PATENTS/](http://BELFUSE.COM/STEWART/STEWART_PATENTS/)

USB TYPE-C PIN ASSIGNMENTS			
Pin Number	Signal Name	Pin Number	Signal Name
A1	GND	B12	GND
A2	SSTXp1	B11	SSRXp1
A3	SSTXn1	B10	SSRXn1
A4	VBUS	B9	VBUS
A5	CC1	B8	SBU2
A6	Dp1	B7	Dn2
A7	Dn1	B6	Dp2
A8	SBU1	B5	CC2
A9	VBUS	B4	VBUS
A10	SSRXn2	B3	SSTXn2
A11	SSRXp2	B2	SSTXp2
A12	GND	B1	GND



RECOMMENDED PCB HOLE LAYOUT
TOP VIEW (TOLERANCE: .002 [0.05])



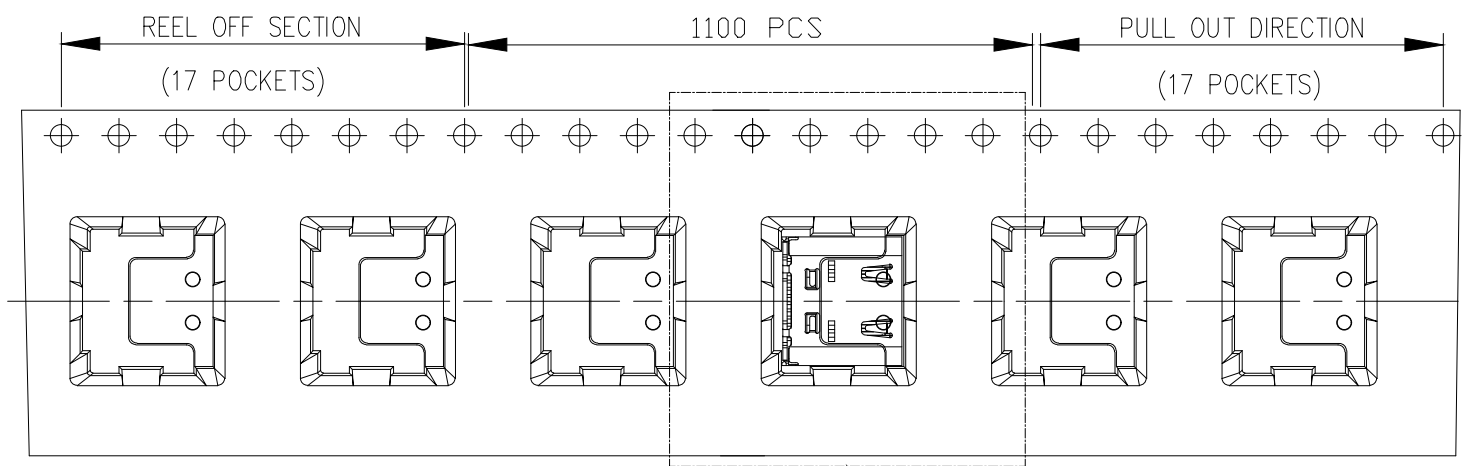
<p>THIRD ANGLE PROJECTION</p> <p>DRAWING IS SUBJECT TO CHANGE WITHOUT NOTICE</p> <p>UNLESS OTHERWISE SPECIFIED DIMENSIONS MM [INCH] TOLERANCES ARE:</p> <p>X.X [.X] ±0.3 [±0.012"] X.XX [.XX] ±0.25 [±0.010"] X.XXX [.XXX] ±0.100 [±0.004"] ANGLES ± 3° DO NOT SCALE DRAWING</p> <p>SHEET NO. 2 OF 3</p>	<p>1422 6th Avenue York, PA 17403 (717) 235-7512 http://www.cinch.com</p>
<p>TITLE: USB4 TYPE-C RIGHT ANGLE RECEPTACLE, SMT</p>	
<p>THIS DRAWING AND THE SUBJECT MATTER SHOWN THEREON ARE CONFIDENTIAL AND THE PROPRIETARY PROPERTY OF STEWART CONNECTOR AND SHALL NOT BE REPRODUCED, COPIED, OR USED IN ANY MANNER WITHOUT PRIOR WRITTEN CONSENT OF STEWART CONNECTOR. ONE OR MORE U.S. PATENTS MAY APPLY TO THIS PRODUCT. FOR DETAILS, PLEASE VISIT: HTTP://BELFUSE.COM/STEWART/STEWART_PATENTS/</p>	
<p>DRN BY: KAW</p> <p>APPD BY: GWL</p> <p>DWG NO. CT520024</p>	<p>DATE 5/20/2026</p> <p>DATE 5/21/2026</p> <p>REV. A0</p>

B

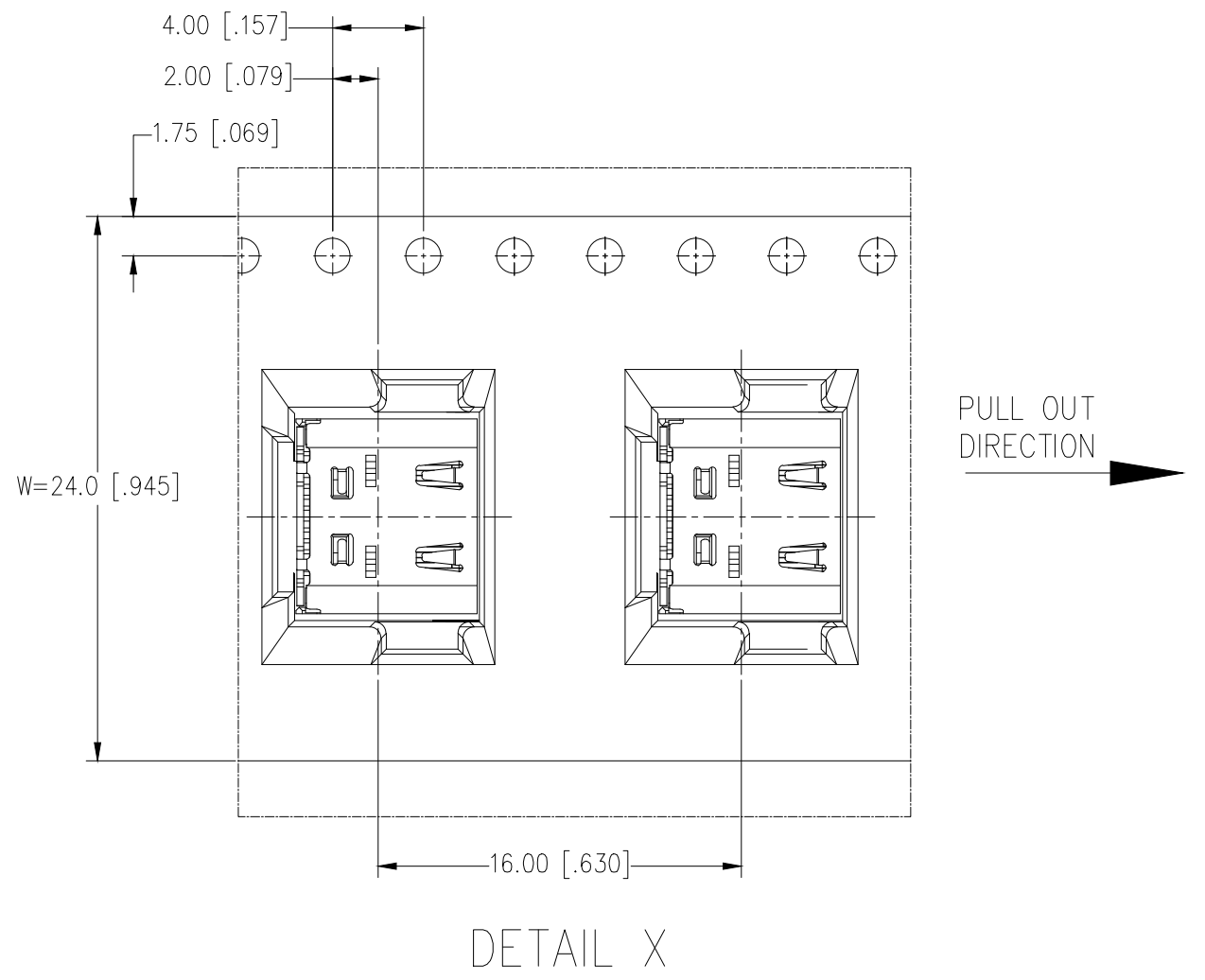
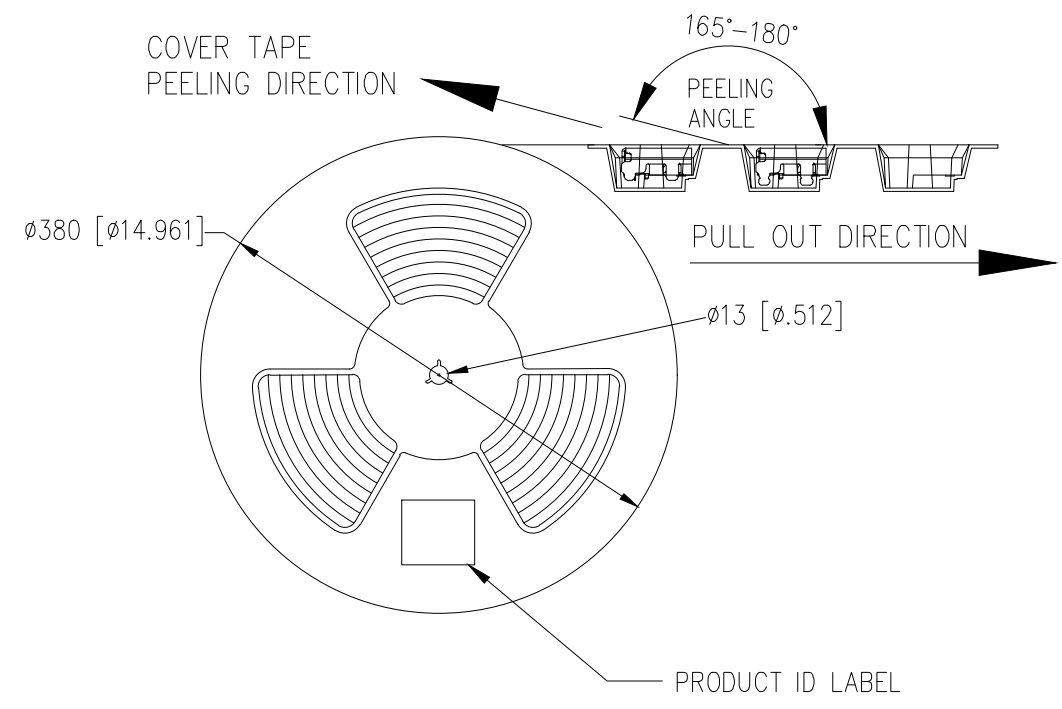
B

A

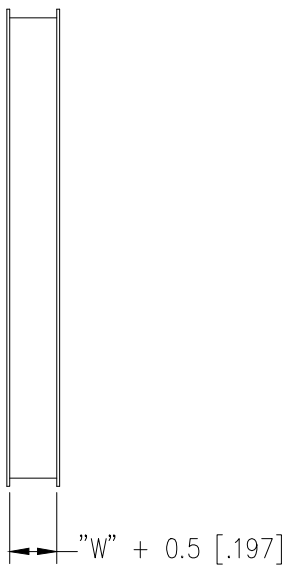
A



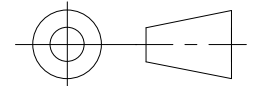
SEE DETAIL X



DETAIL X



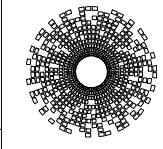
THIRD ANGLE PROJECTION



DRAWING IS SUBJECT TO CHANGE WITHOUT NOTICE

UNLESS OTHERWISE SPECIFIED
DIMENSIONS MM [INCH]
TOLERANCES ARE:
X.X [.X] $\pm 0.3 [\pm 0.012]$
X.XX [.XX] $\pm 0.25 [\pm 0.010]$
X.XXX [.XXX] $\pm 0.100 [\pm 0.004]$
ANGLES $\pm 3^\circ$
DO NOT SCALE DRAWING

SHEET NO. 3 OF 3



stewart
CONNECTOR
a bel group

1422 6th Avenue
York, PA 17403
(717) 235-7512
<http://www.cinch.com>

TITLE: USB4 TYPE-C RIGHT ANGLE RECEPTACLE, SMT

THIS DRAWING AND THE SUBJECT MATTER SHOWN THEREON ARE CONFIDENTIAL AND THE PROPRIETARY PROPERTY OF STEWART CONNECTOR AND SHALL NOT BE REPRODUCED, COPIED, OR USED IN ANY MANNER WITHOUT PRIOR WRITTEN CONSENT OF STEWART CONNECTOR. ONE OR MORE U.S. PATENTS MAY APPLY TO THIS PRODUCT. FOR DETAILS, PLEASE VISIT: [HTTP://BELFUSE.COM/STEWART/STEWART_PATENTS/](http://BELFUSE.COM/STEWART/STEWART_PATENTS/)

DRN BY:	KAW	DATE	5/20/2026
APPD BY:	GWL	DATE	5/21/2026
DWG NO.	CT520024	REV.	A0