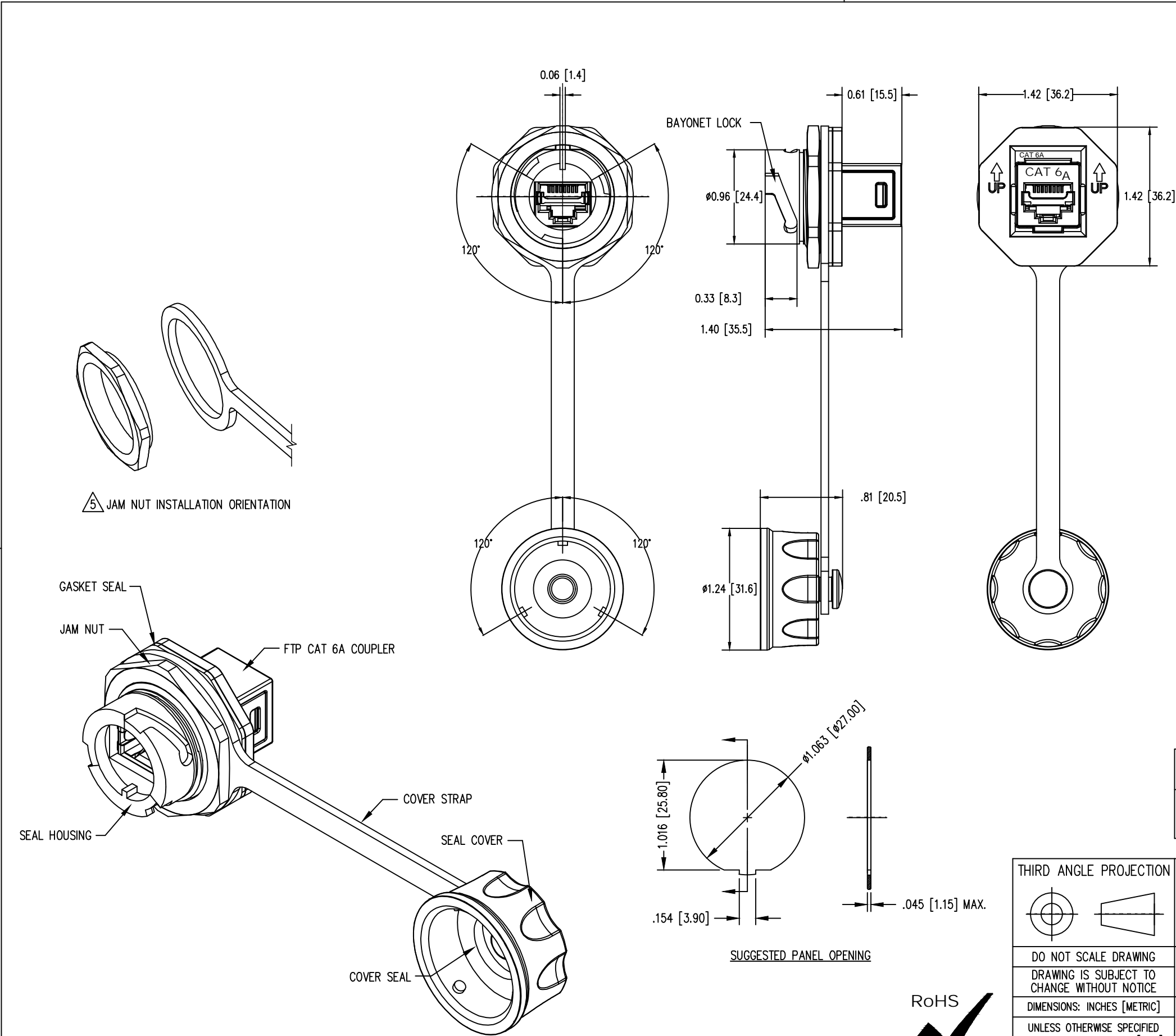


B

A

B

A




1

DATE	REV	ECN	APP'D. BY
06/16/21	A0	—	BTS
08/12/24	A1	12419	KAW

- NOTES:
- CONNECTOR MATERIALS:  
HOUSING: THERMOPLASTIC UL94 V-0, ZINC ALLOY (FULL SHIELD)  
CONTACTS: COPPER ALLOY, TIN PLATED  
CONTACT PLATING: SELECTIVE GOLD OR EQUIVALENT  
IN THE CONTACT AREA  
SEE CHART FOR PART NUMBER
  - JACK DIMENSIONS AND TOLERANCES COMPLY WITH TIA-1096 STANDARD.
  - DESIGNED FOR CATEGORY 6A APPLICATIONS.
  - INTERNATIONAL PROTECTION CODE MEETS IP67.
  - FOR INSTALLATION, PLACE PANEL SEAL ON REAR SIDE OF PANEL.  
IF USING THE COVER STRAP, ENSURE STRAP OPENING IS ENCLOSED  
BY THE FLANGE OF THE NUT, AND NOT PINCHED. TIGHTEN NUT TO  
26 TO 44 INCH-POUNDS [3 TO 5 NEWTON-METERS].
  - ELECTRICAL PROPERTIES:  
INSULATION RESISTANCE: 500MΩ MIN. @ 100VDC  
DIELECTRIC WITHSTANDING VOLTAGE: 1000VDC OR VAC @ 60Hz FOR 1 MIN.

50 MICRO-INCHES [1.27um]	SS-60400-030
CONTACT PLATING IN MATING AREA	PART NUMBER

THIRD ANGLE PROJECTION	 a bel group	11118 Susquehanna Trail South Glen Rock, PA 17327-9199 (717) 235-7512 <a href="http://www.stewartconnector.com">http://www.stewartconnector.com</a>	
DO NOT SCALE DRAWING DRAWING IS SUBJECT TO CHANGE WITHOUT NOTICE		TITLE: INDUSTRIAL SHIELDED COUPLER JACK IP67 (FTP), CAT 6A	
DIMENSIONS: INCHES [METRIC]	THIS DRAWING AND THE SUBJECT MATTER SHOWN THEREON ARE CONFIDENTIAL AND THE PROPRIETARY PROPERTY OF STEWART CONNECTOR AND SHALL NOT BE REPRODUCED, COPIED, OR USED IN ANY MANNER WITHOUT PRIOR WRITTEN CONSENT OF STEWART CONNECTOR. ONE OR MORE U.S. PATENTS MAY APPLY TO THIS PRODUCT. FOR DETAILS, PLEASE VISIT: <a href="http://BELFUSE.COM/STEWART/STEWART_PATENTS/">HTTP://BELFUSE.COM/STEWART/STEWART_PATENTS/</a>	DRN BY: JE	DATE 06/15/21
UNLESS OTHERWISE SPECIFIED TOLERANCES ARE ±.005 [0.13] ANGLES ARE ± 1°		APPD BY: BTS	DATE 06/16/21
SHEET NO. 1 OF 1		DWG NO. CT600259	REV. A1

RoHS



2

1

AutoCAD