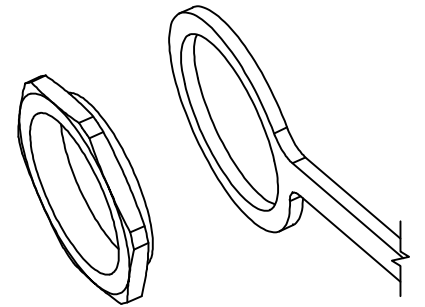
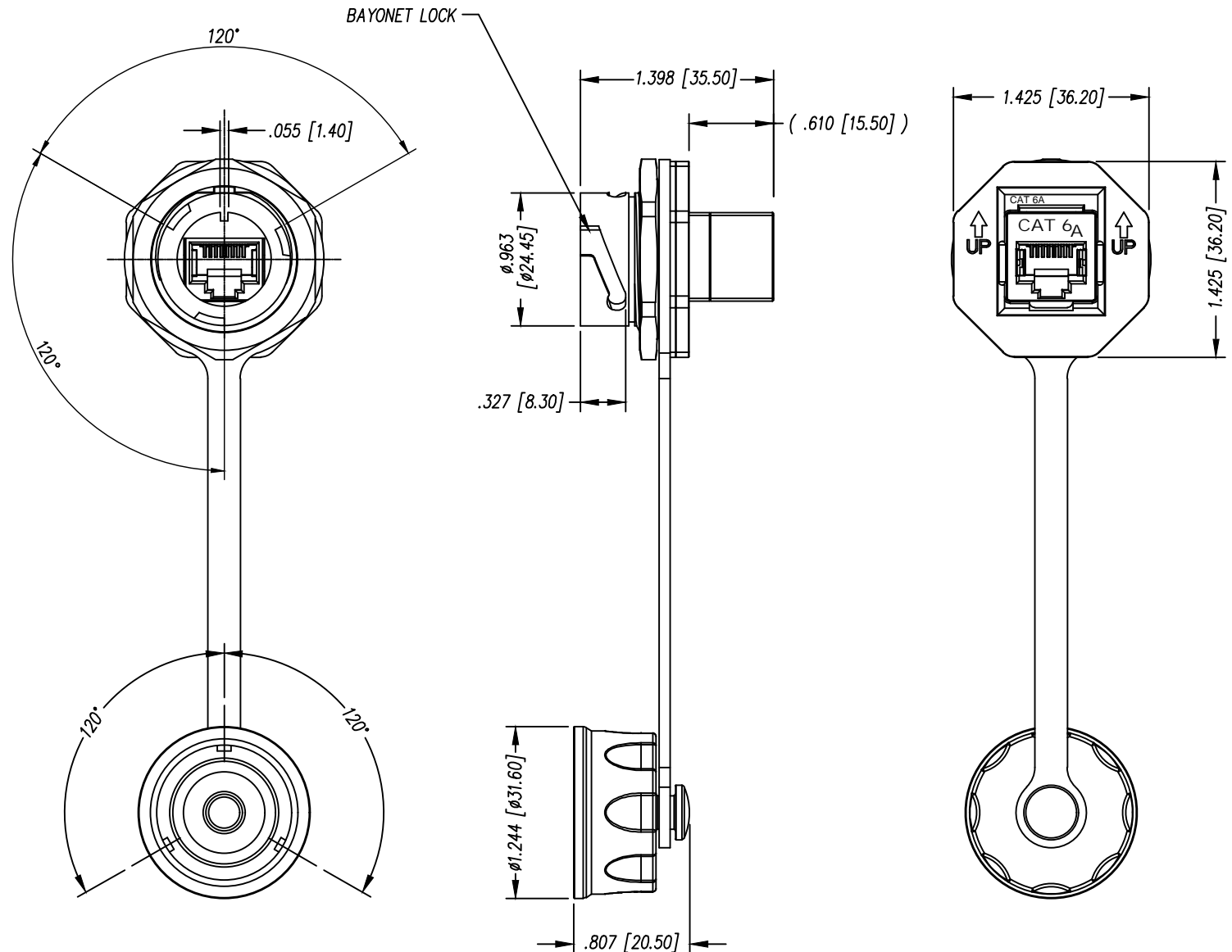
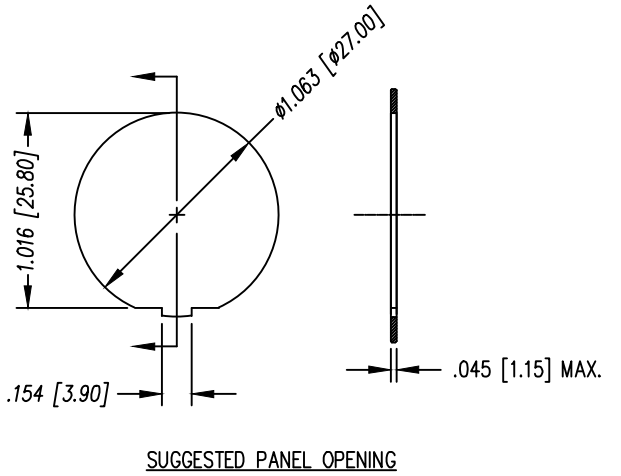
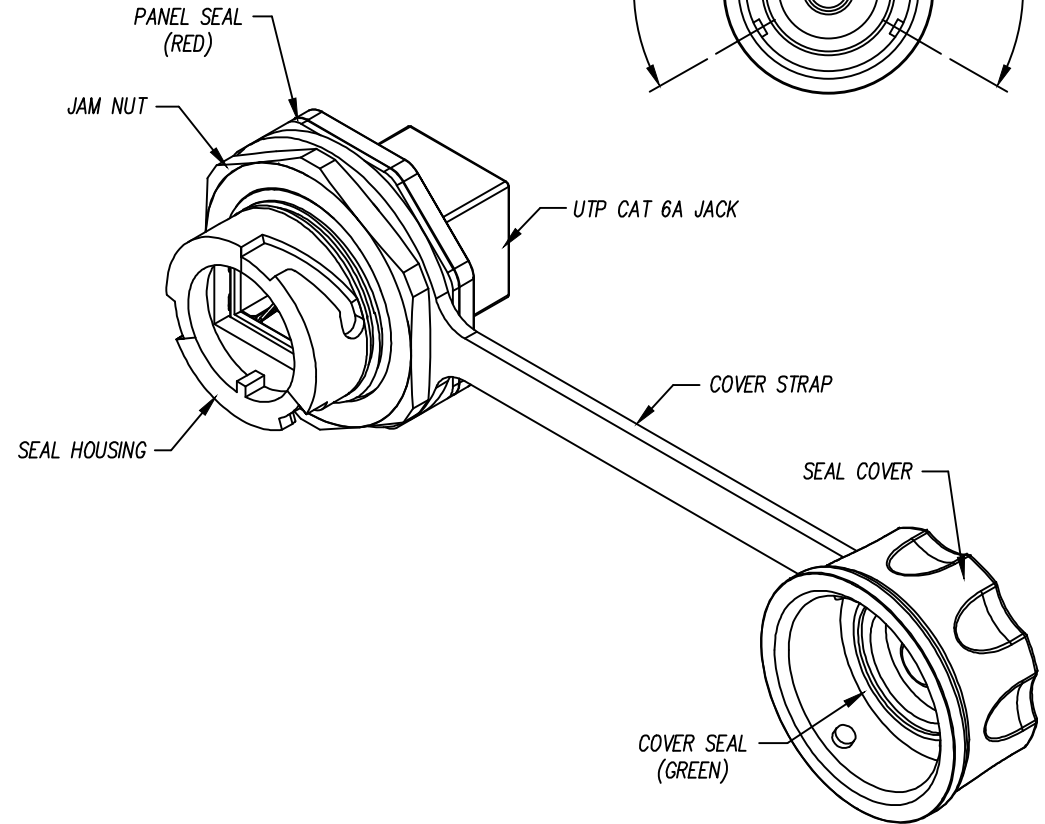


DATE	REV	ECN	APP'D. BY
9/2/22	A0	12037	JE
08/12/24	A1	12419	KAW



JAM NUT INSTALLATION ORIENTATION



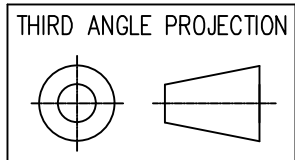
SUGGESTED PANEL OPENING



NOTES:

- CONNECTOR MATERIALS:
HOUSING: THERMOPLASTIC UL94 V-0
CONTACTS: COPPER ALLOY
CONTACT PLATING: SELECTIVE GOLD IN THE CONTACT AREA
- JACK DIMENSIONS AND TOLERANCES COMPLY WITH TIA-1096 STANDARD.
- DESIGNED FOR CATEGORY 6A APPLICATIONS.
- INTERNATIONAL PROTECTION CODE MEETS IP67.
- FOR INSTALLATION, PLACE RED PANEL SEAL ON REAR SIDE OF PANEL. IF USING THE COVER STRAP, ENSURE STRAP OPENING IS ENCLOSED BY THE FLANGE OF THE NUT, AND NOT PINCHED. TIGHTEN NUT TO 26 TO 44 INCH-POUNDS [3 TO 5 NEWTON-METERS].
- ELECTRICAL PROPERTIES:
INSULATION RESISTANCE: 500MΩ MIN. @ 100VDC
DIELECTRIC WITHSTANDING VOLTAGE: 1000VDC OR VAC @ 60Hz FOR 1 MIN.

50 MICRO-INCHES [1.27um]	SS-60400-033
CONTACT PLATING IN MATING AREA	PART NUMBER



DO NOT SCALE DRAWING
DRAWING IS SUBJECT TO CHANGE WITHOUT NOTICE

DIMENSIONS: INCHES [METRIC]
UNLESS OTHERWISE SPECIFIED TOLERANCES ARE ±.005 [0.13] ANGLES ARE ± 1°

SHEET NO. 1 OF 1



1118 Susquehanna Trail South
Glen Rock, PA 17327-9199
(717) 235-7512
<http://www.stewartconnector.com>

TITLE: INDUSTRIAL UNSHIELDED COUPLER JACK IP67 (UTP) CAT 6A WITH EXTERIOR JACK LATCH	
DRN BY: JMM	DATE 9/2/22
APPD BY: JE	DATE 9/2/22
DWG NO. CT600264	REV. A1