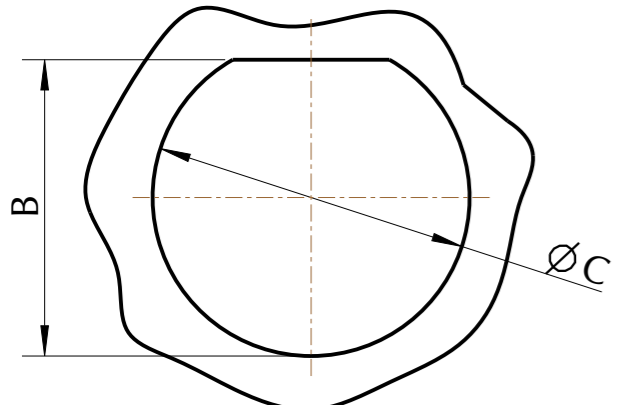
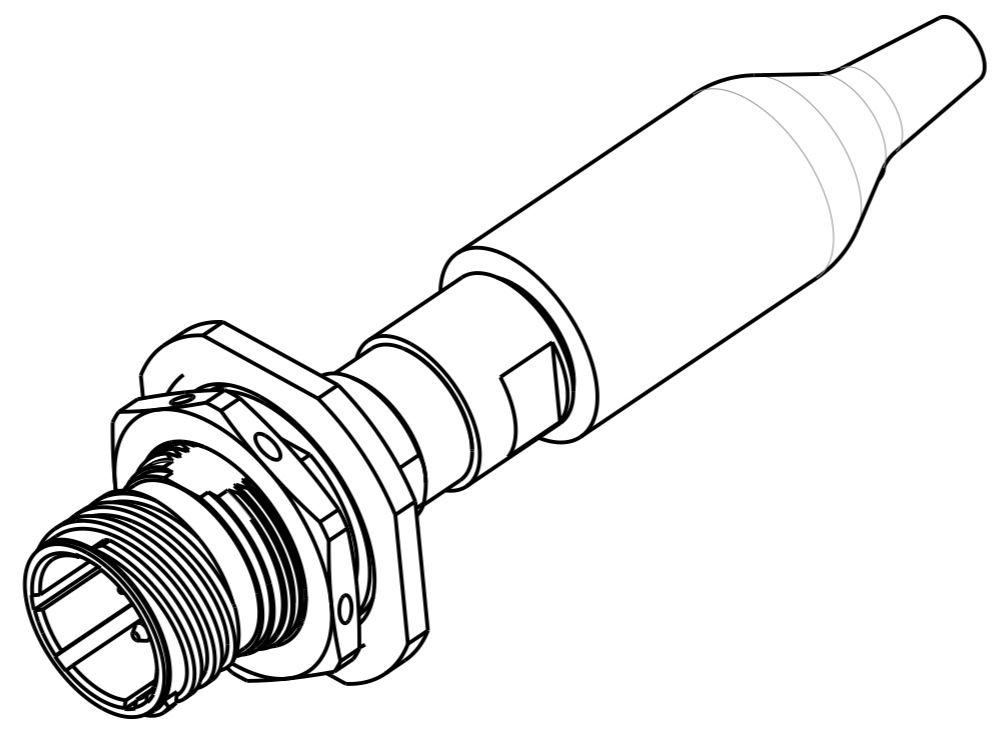


MT FERRULE KIT
(MALE)
12CH OR 24CH
(SEE NOTE 4)



PANEL CUT-OUT



NOTE:

- 38999 PANEL HOUSING KEY POLARIZATION - 'N' HOUSING MAY BE SUPPLIED IN OTHER POLARIZATIONS.
- CABLE DIAMETER: Ø3.0mm TO Ø5.5mm FOR STRAIN RELIEF KIT REFER TO PART NUMBERING SCHEME: WI 81-67
- FOR SHELL KIT REFER TO PART NUMBERING SCHEME: WI 81-65
- MT FERRULE KIT SUPPLIED SEPARATELY, SEE PART NUMBERING SCHEME: WI 81-66

CONNECTOR MATERIAL OPTIONS

MATERIAL	FINISH
ALUMINIUM ALLOY	ZINC COBALT
STAINLESS STEEL 316L	PASSIVATE
NICKEL ALUMINIUM BRONZE	NON-REFLECTIVE SHOT BLAST

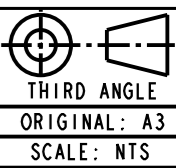
RECOMMENDED PANEL DIMENSIONS		
SHELL SIZE	B +0.00/-0.25	ØC +0.25/-0.00
11	19.59 (0.771)	20.96 (0.825)

I	PRODUCTION RELEASE	MEH	GM	05/04/23
B	NOTE 3 ADDED	MEH	GM	12/10/21
A	FIRST ISSUE	MEH	GM	13/06/23
ISSUE	CHANGE DESCRIPTION	DRN	CHKD	DATE

UNLESS OTHERWISE STATED:
ALL DIMENSIONS ARE IN mm

CONFIDENTIAL - THE INFORMATION CONTAINED
IN THIS DRAWING IS THE SOLE PROPERTY OF
CINCH CONNECTIVITY SOLUTIONS LTD. ANY
REPRODUCTION IN PART OR AS A WHOLE WITHOUT
THE WRITTEN PERMISSION OF CINCH CONNECTIVITY
SOLUTIONS LTD IS PROHIBITED

Cinch Connectivity Solutions LTD
11 BILTON ROAD, CHELMSFORD, ESSEX. CMI 2UP
TEL: +44 (0) 1245 342060



DRAWN MEH	MATERIAL SEE BOM	FINISH SEE BOM	ASSEMBLIES TO BE CLEAN & FREE FROM ALL BURRS & SHARP EDGES
CHECKED GM			

DRAWING TITLE
MT JAM NUT RECEPTACLE
D38999 TYPE III #11 - CUSTOMER OUTLINE

DRAWING NUMBER
6761-C

SHEET 1
OF 1