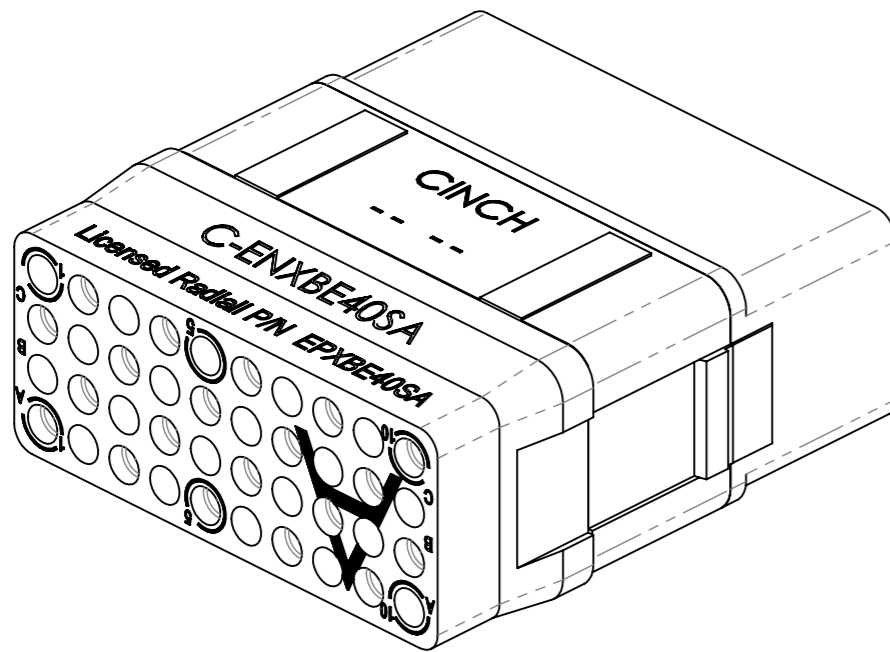
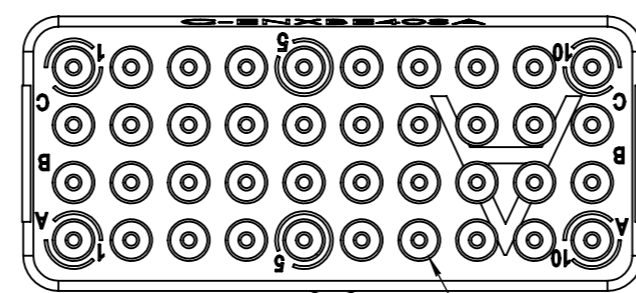
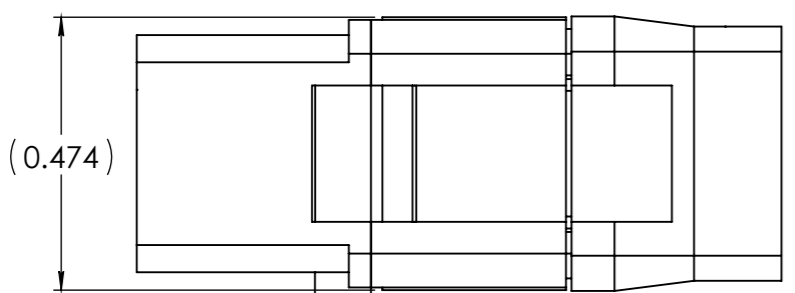
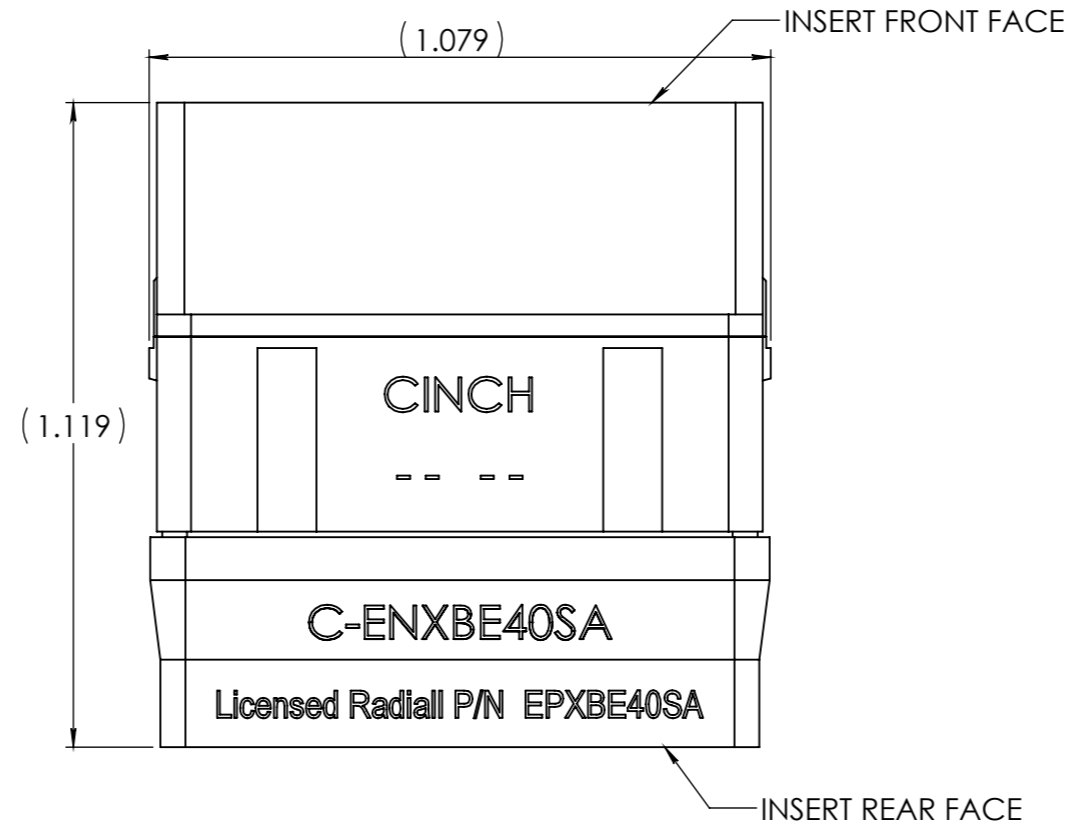
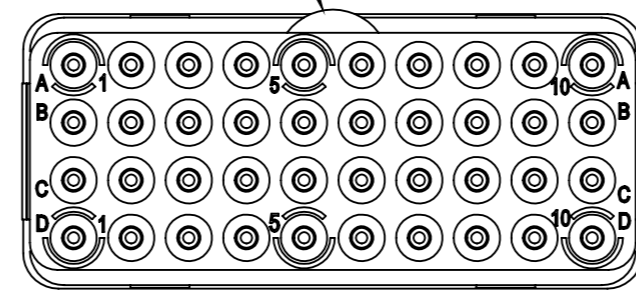


SERIES C-ENX	DESIGNATION ENVIRONMENTAL SOCKET INSERT 40X SIZE 22 CONTACT, A	C-ENXBE40SA-S	A
	DESIGNATION		



INSERT POLARIZATION KEY, A



SOCKET CONTACT CAVITIES
40 POSITION, SIZE 22

NOTES:

1. CINCH PART NUMBER: C-ENXBE40SA
2. ALL DIMENSIONS ARE FOR REFERENCE
3. PART MARKING AS SHOWN

MATERIALS AND FINISHES:

- 40 POS INSERTS: THERMO PLASTIC
- GROMMET: FLUROSILICONE ELASTOMER
- INTERFACIAL SEALS: FLUROSILICONE ELASTOMER
- CONTACT RETENTION CLIPS: BERYLIUM COPPER

					ALL DIMENSIONS ARE PLATING INCLUDED		Ra	✓	SCL. 3:1		A3	CINCH CONNECTIVITY SOLUTIONS
					Gen. Tol.	inches	°					
IND	ECN	MODIFICATION		DATE	NAME	CHECKED	MATERIAL		DRAWN			
A	CREATION	PEN:	EP:	N°Provisional:	DATE	NAME	TREATMENT		CHECKED			