

NOTES: UNLESS OTHERWISE SPECIFIED.

1. MATERIAL & FINISH:

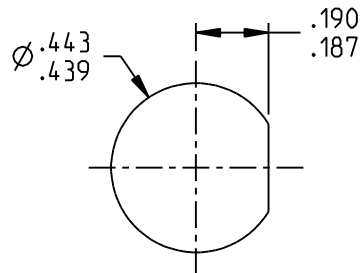
- 1.1 BODY, TRS: NICKEL PLATED BRASS
- 1.2 INSULATOR & DIELECTRIC: PTFE (TEFLON)
- 1.3 BODY, SMA / TRS INTERMEDIATE CONTACT: GOLD PLATED BRASS
- 1.4 CENTER CONTACT: GOLD PLATED BERYLLIUM COPPER
- 1.5 GASKET: SILICONE RUBBER
- 1.6 MOUNTING HARDWARE: NICKEL PLATED COPPER ALLOY

2. ELECTRICAL:

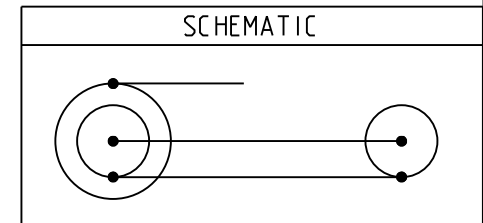
- 2.1 FREQUENCY (MAX): 500 MHZ
- 2.2 IMPEDANCE: NON-CONSTANT.

3. PANEL THICKNESS (MAX): .160

4. PANEL NUT TORQUE (MAX): 35 IN-LBS



RECOMMENDED
PANEL CUTOUT



| | | | |
|--|--|--|----------------------|
| <p>This PROPRIETARY Document is property of Cinch Connectivity Solutions. It is confidential in nature, non-transferable, and issued with the clear understanding that it is not traced or copied without permission and is returnable upon demand.</p> <p>INTERPRET DRAWING IN ACCORDANCE WITH ASME Y14.5-2009.</p> | <p>3RD ANGLE PROJECTION</p> | <h2>TROMPETER</h2> | |
| | <p>RoHS2 <input checked="" type="checkbox"/></p> <p>2011/65/EU</p> | <p>Title: ADAPTER, TRS JACK / SMA JACK, BULKHEAD MOUNT</p> | |
| | <p>UNLESS OTHERWISE SPECIFIED UNITS: INCH</p> <p>.XX ± .02</p> <p>.XXX ± .010</p> <p>ANGLES ± 2°</p> | <p>Model No. 305-1932</p> | <p>Sheet 1 OF 1</p> |
| | <p>Size A</p> | <p>DO NOT SCALE DRAWING</p> | <p>Date: 7/31/17</p> |