
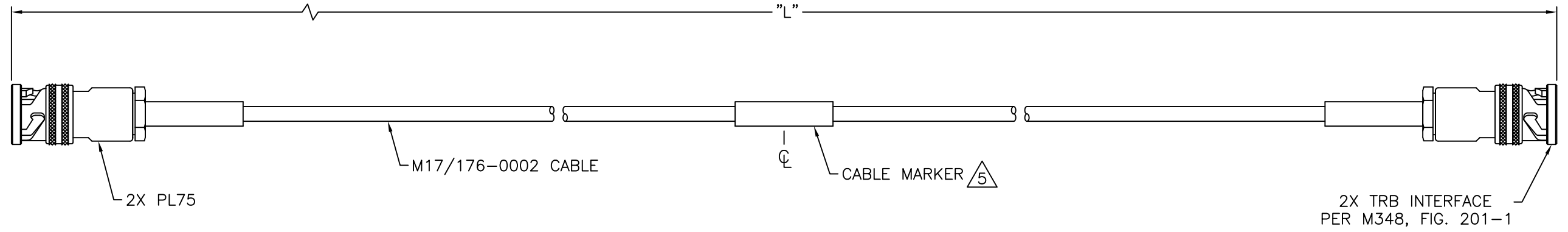
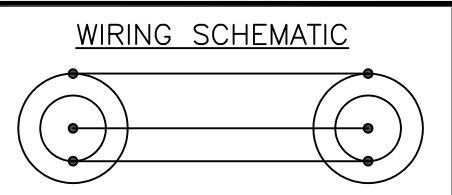





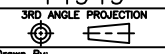

REV	ECO	DATE
001	TBD	10/16/2020

TABLE 1		
MODEL NUMBER	"L"	MARKER 
21-14-M1.0	1.0 M	21-14-M1.0 14949 #####
21-14-M1.5	1.5 M	21-14-M1.5 14949 #####
21-14-M2.0	2.0 M	21-14-M2.0 14949 #####
21-14-M2.5	2.5 M	21-14-M2.5 14949 #####
21-14-M3.0	3.0 M	21-14-M3.0 14949 #####
21-14-M3.5	3.5 M	21-14-M3.5 14949 #####
21-14-M4.0	4.0 M	21-14-M4.0 14949 #####
21-14-M4.5	4.5 M	21-14-M4.5 14949 #####
21-14-M5.0	5.0 M	21-14-M5.0 14949 #####



NOTES: UNLESS OTHERWISE SPECIFIED.

1. WORKMANSHIP PER IPC/WHMA-A-620, CLASS 3, SECTION 13.
-  2. TOLERANCE PER IPC/WHMA-A-620, SECTION 11.1
3. TESTING:
 - 3.1 CONTINUITY
 - 3.2 DWV: 1000 VRMS
4. BEND RADIUS (MIN): 1.9 MM
-  5. MARKERS:
 - 5.1 MARKER PER TABLE 1.
 - 5.2 ##### = LOT CODE

 <small>CONNECTIVITY SOLUTIONS</small> <small>since 1965</small> <small>NOTICE: The information in this drawing is PROPRIETARY and must not be used without the permission of Cinch Connectivity Solutions. It may contain data whose export is restricted. Verify status prior to exporting.</small> <small>INTERPRET DRAWING IN ACCORDANCE WITH ASME Y14.5-2018</small>	Model No.	21-14-MX.X	Title: TROMPETER	
	RoHS2	14949	Cable Code	
	2011/65/EU		3RD ANGLE PROJECTION	
	UNLESS OTHERWISE SPECIFIED UNITS: INCH	Drawn By:	C. MONAHAN	Drawing No.
	Date:	10/16/2020	Rev.	001
	SIZE	B	DO NOT SCALE DRAWING	Workmanship Std: SEE NOTES
				SHEET 1 OF 1