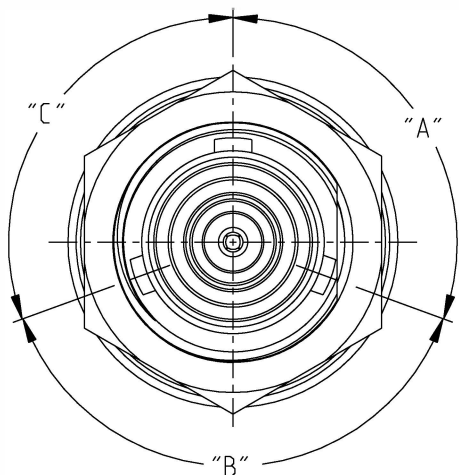
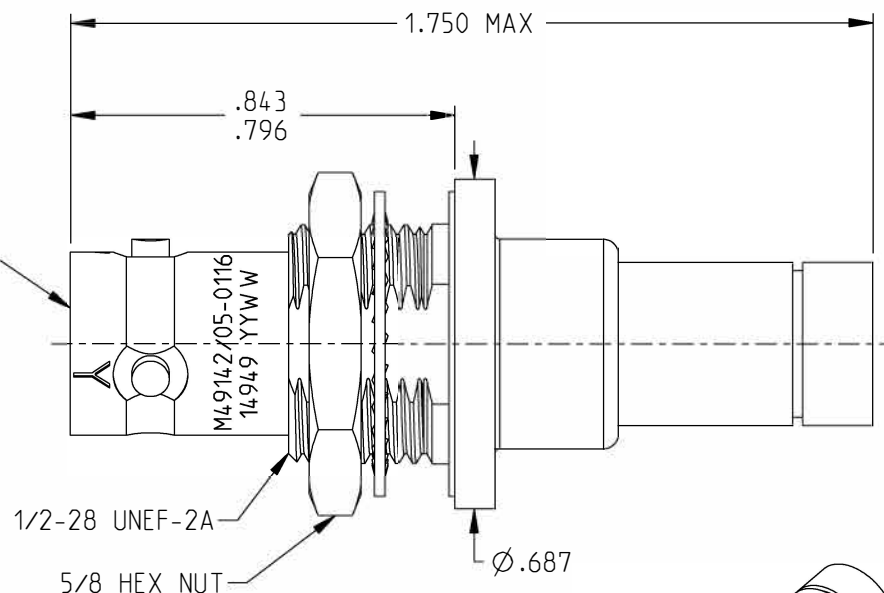


MILITARY PART NO.	MILITARY CABLE NO.	NSN	"A°"	"B°"	"C°"
M49142/05-0016	M17/45-RG108	-	120	120	120
M49142/05-0116	M17/45-RG108	-	110	140	110
M49142/05-0216	M17/45-RG108	-	135	135	90
M49142/05-0017	M17/176-00002	5935015147948	120	120	120
M49142/05-0117	M17/176-00002	-	110	140	110
M49142/05-0217	M17/176-00002	-	135	135	90

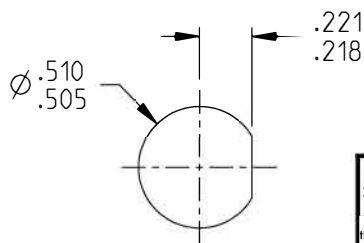
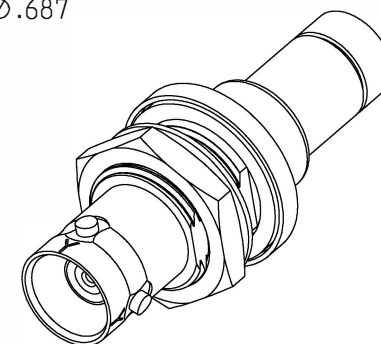
REV	ECO	DATE
C	56979	3/27/2018
D	57960	6/2/2021
E	58321	8/1/2022



TRB JACK INTERFACE
PER MIL-STD-348
FIGURE 201-2



M49142/05-0116 SHOWN



RECOMMENDED
PANEL CUTOUT

NOTES: UNLESS OTHERWISE SPECIFIED.

1. MATERIAL & FINISH:

- 1.1 BODY, CRIMP FERRULE CRIMP SLEEVE & INSERT:
SILVER PLATED BRASS
- 1.2 INSULATOR & DIELECTRIC: PTFE (TEFLON)
- 1.3 INTERMEDIATE CONTACT: GOLD PLATED BRASS
- 1.4 CENTER CONTACT: GOLD PLATED BERYLLIUM COPPER
- 1.5 GASKET: SILICONE RUBBER
- 1.6 MOUNTING HARDWARE: SILVER PLATED COPPER ALLOY

2. ELECTRICAL:

- 2.1 FREQUENCY (MAX): 500 MHZ
- 2.2 IMPEDANCE: NON-CONSTANT

3. PANEL THICKNESS (MAX): .109

4. PANEL NUT TORQUE (MAX): 35 IN LBS

5. ASSEMBLE PER TAI-206

<p>NOTICE: The information in this drawing is PROPRIETARY and must not be used without the permission of Cinch Connectivity Solutions. It may contain data whose export is restricted. Verify status prior to exporting.</p> <p>INTERPRET DRAWING IN ACCORDANCE WITH ASME Y14.5-2018</p>	<p>Model No: M49142/05-0X1X</p> <p>RoHS2 <input checked="" type="checkbox"/> 2011/65/EU</p> <p>UNLESS OTHERWISE SPECIFIED UNITS: INCH</p> <p>.XX ±.02 .XXX ±.010 ANGLES ±2°</p>	<p>Eage Code 14949</p> <p>3RD ANGLE PROJECTION</p> <p>ENGINEER: C. MONAHAN</p> <p>Date: 8/1/2022</p>	<p>Title: TROMPETER</p> <p>M49142/05 TOOL CRIMP TRB JACK</p> <p>Drawing No. C_3-0339</p> <p>REV. E</p>
	<p>Size A</p> <p>DO NOT SCALE DRAWING</p>	<p>Workmanship Std: TFS-4</p> <p>Sheet 1 OF 1</p>	