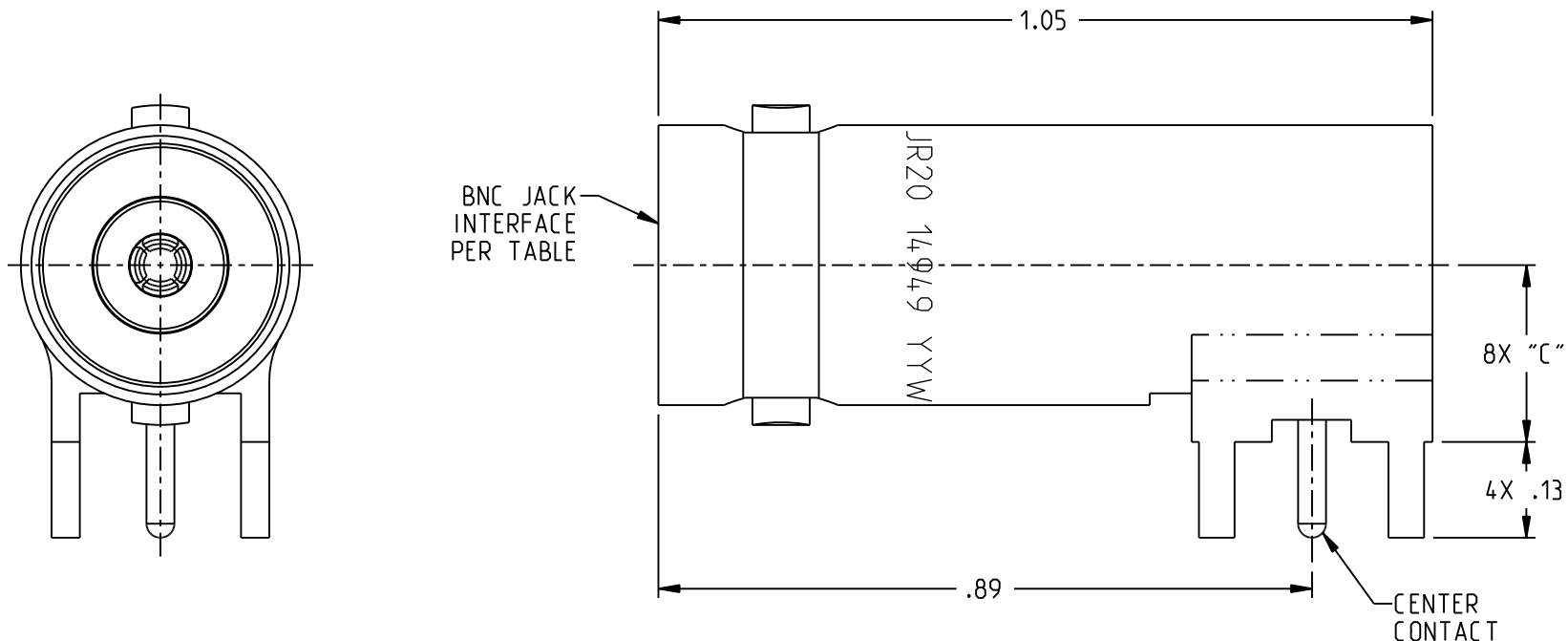


MODEL NUMBER	INTERFACE SPEC	IMPD (OHMS)	Ø "A"	Ø "B"	"C"
CBJR20	MIL-STD-348, FIG. 301-2	50	.046	.0625	.24
UCBJR20	MIL-STD-348, FIG. 330-1	75	.029	±.0010	
CBJR20A	MIL-STD-348, FIG. 301-2	50	.046	.070	.34
UCBJR20A	MIL-STD-348, FIG. 330-1	75	.029	±.001	

REV	ECO	DATE
G	7636	8/24/1987
H	9449	10/2/1991
J	57203	1/11/2019

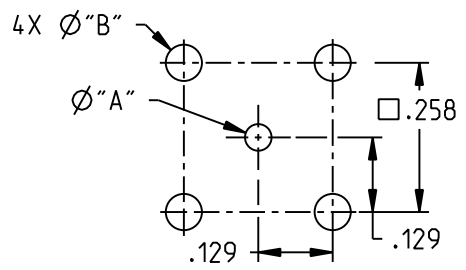


CBJR20 SHOWN

NOTES: UNLESS OTHERWISE SPECIFIED.

1. MATERIALS AND FINISH:
 - 1.1 BODY: TIN PLATED BRASS
 - 1.2 INSULATOR & DIELECTRIC: PTFE (TEFLON)
 - 1.3 CENTER CONTACT: GOLD PLATED BERYLLIUM COPPER
2. ELECTRICAL:
 - 2.1 IMPEDANCE: SEE TABLE
 - 2.2 FREQUENCY (MAX): 4 GHz

RECOMMENDED MTG HOLE PATTERN



<p>NOTICE: The information in this drawing is PROPRIETARY and must not be used without the permission of Cinch Connectivity Solutions. It may contain data whose export is restricted. Verify status prior to exporting.</p> <p>INTERPRET DRAWING IN ACCORDANCE WITH ASME Y14.5-2018</p>	Model No:	XCBJR20X		Title: TROMPETER		
	RoHS2	2011/65/EU	Cage Code	14949		
	UNLESS OTHERWISE SPECIFIED UNITS: INCH		3RD ANGLE PROJECTION	Drawing No. C_1-0044		
	.XX ±.02 .XXX ±.010 ANGLES ±2°		ENGINEER: C. MONAHAN	Date: 3/19/2026	Workmanship Std: TFS-4	Sheet 1 OF 1