

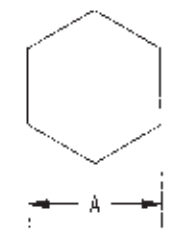
DASH NO	CABLES ACCOMMODATED	A HEX	B DIM	C MAX	ASSEMBLY PER
-20	M117-15-00007				
-202	TWC-78-				
-203	TWC-124-1A				
-204	8502, RAYCHEM				
-205	TWC-78-F2				
-206	187600120, RAYCHEM			1.80	TAI-165
-207	33310, BELDEN				
-208	202-3827, MICROCOT				
-209	202-3842, MICROCOT				
-210	8451, BELDEN				
-211	232-3834, MICROCOT				
-212	25241014, RAYCHEM	.344	.033		
-213	TWC-78-2				
-214	WC-124-F			.55	TAI-138
-215	BL982, TIMES				
-216	BL1242, TIMES				
-217	GC8751M24F, GRIMMAN				
-218	EDP221888, RAYCHEM				
-219	25260114, RAYCHEM				
-220	GC8753P1, GRIMMAN			1.80	TAI-166
-221	10614, RAYCHEM				
-222	10613, RAYCHEM				
-223	FW52-1149, HUGHES				

DATA CONTAINED IN THIS DOCUMENT IS PROPRIETARY TO TROMPETER CONNECTIVITY, INC. AND SHALL NOT BE REPRODUCED, COPIED OR USED FOR PURCHASE OF PARTS WITHOUT EXPRESS WRITTEN PERMISSION.

REVISED PER ECO # 15553

REVISIONS
DATE: 2/13/08
APPROVED: [Signature]

DASH NO	CABLES ACCOMMODATED	A HEX	B DIM	C MAX	ASSEMBLY PER
-301	GC8750C1, GRIMMAN				
-302	GC8753E1, GRIMMAN				
-303	152843514 RAYCHEM				TAI-165
-304					
-305	M 7117T-00301, THERMATICS	.344	.033	1.80	
-306	TRC-50-2 M17134-00032				TAI-218
-307	TRC-75-1				TAI-168
-308	TRC-75-2				TAI-218
-309	TRC-50				TAI-168

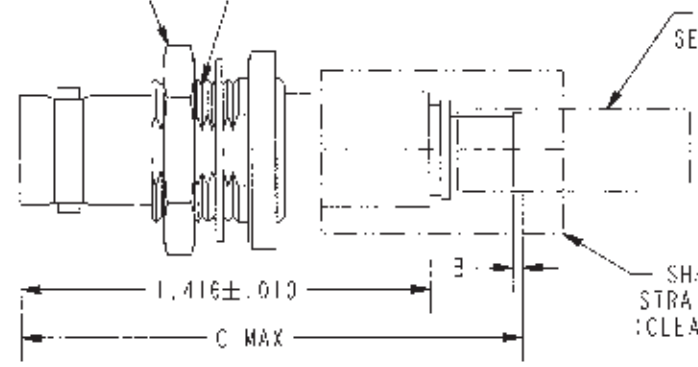


RECOMMENDED HEX CRIMP SCALE 2/1



SCALE 1/1

.525 H-X NUT .500 28 UNIT 2A

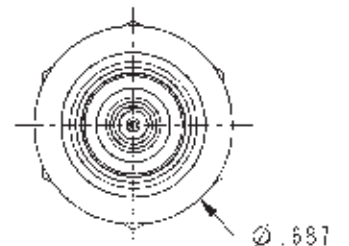


SHRINKABLE SEALING SLEEVE (LONG)

4

SHRINKABLE STRAIN RELIEF (CLEAR, 175°C)

4



SCALE 2/1

5. EXAMPLE OF COMPLETE MODEL NUMBER:

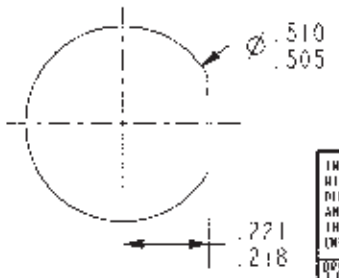
BJ79CTL 201

BASIC MODEL NO. — CABLE GROUP DASH NO

-202 SHOWS

1. SHRINKABLE STRAIN RELIEF AND/OR SHRINKABLE SEALING SLEEVE SUPPLIED LOOSE AS FOLLOWS:

- a. CABLE GROUPS -201 THROUGH -210, -217 THROUGH -303, -305, -307, & -309
- 1 SHRINKABLE STRAIN RELIEF (1.00 LONG)
- 1 SHRINKABLE SEALING SLEEVE (1.25 LONG)
- b. CABLE GROUPS -211 THROUGH -216 AND -305 & -308
- 1 SHRINKABLE STRAIN RELIEF (1.75 LONG)



RECOMMENDED PANEL CUTOUT SCALE 2/1

- 3. MAX NUT PANEL THICKNESS .109
- 2. FINISH: TFS- A (NICKEL)
- 1. 2-UG CONCENTRIC TWIAX/TRIAX TR5, FULL CRIMP BULKHEAD MOUNT CABLE RECEPTACLE

NOTES: UNLESS OTHERWISE SPECIFIED.

INTERPRET DRAWING PER MIL-STD-100 DIMENSIONS ARE IN INCHES AND THIRDS FINISH THICKNESS (UNLESS OTHERWISE SPECIFIED)		DR. DIMENSION SPECIFIED XX = .02 XXX = .010 ANGLE = 1°		
DATE: 12-12-07 BY: J. CARPENTER CHECKED: M.J. 2-13-08 APPROVED: [Signature] 2/13-08		MATERIAL: _____ FINISH: _____ TITLE: BJ79CTL		
PROJECT: _____ PART: _____ PROBE FILE NO: 3-0206		SCALE: 2/1 DATE: 11-11-88		REV: 3