

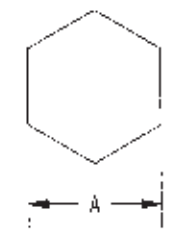
DASH NO	CABLES ACCOMMODATED	A HEX	B DIM	C MAX	ASSEMBLY PER
-20	MI 17-15 00007				
-202	TWC-78-				
-203	TWC-124 1A				
204	8502, RAYCIM			1.80	TAI-65
-205	TWC-78-F2				
205	187600120, RAYCIM				
-207	83310, BELDEN				
-208	202-3827, M CRODDOT				
209	202-3842, M CRODDOT				
-210	8451, BELDEN				
-211	232-3834, MICRODOT				
-212	25241014, RAYCHEM	.344	.033		
-213	TWC-78-2				
214	WC 124 2			.55	TAI-138
-215	BL982, TIMES				
-216	BL1242, TIMES				
-217	GC8751M24F, GRIMMAN				
-218	EDP221888, RAYCHEM				
-219	25260114, RAYCIM				
-220	GC8753P1, GRIMMAN			1.80	TAI-166
-221	10614, RAYCHEM				
-222	10613, RAYCHEM				
-223	FW52-1149, HUGHES				

DATA CONTAINED IN THIS DOCUMENT IS PROPRIETARY TO TROMPETER ELECTRONIC INC AND SHALL NOT BE REPRODUCED, COPIED OR USED FOR PURCHASE OF PARTS WITHOUT EXPRESS WRITTEN PERMISSION.

REVISIONS

REV	DESCRIPTIONS	DATE	APPROVED
P	REVISED PER ECO # 15553	2/13/08	Matt

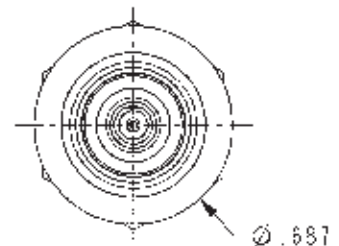
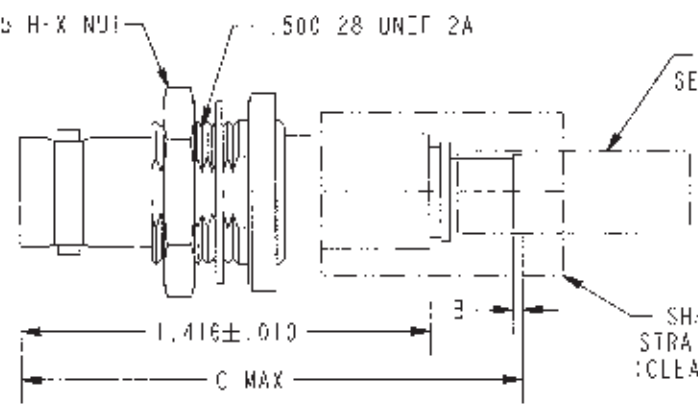
DASH NO	CABLES ACCOMMODATED	A HEX	B DIM	C MAX	ASSEMBLY PER
-301	GC8750C1, GRIMMAN				
-302	GC8753E1, GRIMMAN				
303	152843514 RAYCHEM				TAI-165
-304					
-305	M 7117T-00301, THERMATICS	.344	.033	1.80	
-306	TRC-50-2 M7134-00032				TAI-218
-307	TRC-75-1				TAI-68
-308	TRC-75-2				TAI-218
309	TRC-50				TAI-68



RECOMMENDED HEX CRIMP SCALE 2/1



SCALE 1/1



SCALE 2/1

5. EXAMPLE OF COMPLETE MODEL NUMBER:

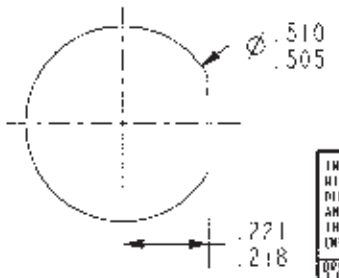
BJ79CTL 201

BASIC MODEL NO. — CABLE GROUP DASH NO

-202 SHOWS

SHRINKABLE STRAIN RELIEF AND/OR SHRINKABLE SEALING SLEEVE SUPPLIED LOOSE AS FOLLOWS:

- a. CABLE GROUPS -201 THROUGH -210, -217 THROUGH -303, -305, -307, & -309
- 1 SHRINKABLE STRAIN RELIEF (1.00 LONG)
- 1 SHRINKABLE SEALING SLEEVE (1.25 LONG)
- b. CABLE GROUPS -211 THROUGH -216 AND -305 & -308
- 1 SHRINKABLE STRAIN RELIEF (1.75 LONG)



RECOMMENDED PANEL CUTOUT SCALE 2/1

- 3. MAX NUT PANEL THICKNESS .109
- 2. FINISH: TFS- A (NICKEL)
- 1. 2-LUG CONCENTRIC TWIAX/TRIAX TR5, FULL CRIMP BULKHEAD MOUNT CABLE RECEPTACLE

NOTES: UNLESS OTHERWISE SPECIFIED.

INTERPRET DRAWING PER MIL-STD-100 DIMENSIONS ARE IN INCHES AND THIRDS FINISH THICKNESS (UNLESS OTHERWISE SPECIFIED)		DR. DIMENSION SPEC FILE XX = .02 XXX = .010 ANGLE = 1°		
DATE: 12-12-07 BY: J. CARPENTER CHECKED: M.J. 2-13-08 APPROVED: [Signature] 2/13-08		MATERIAL: _____ FINISH: _____ TITLE: BJ79CTL		
PROJECT: _____ PART: _____ SCALE: 2/1		DRAWING NO.: 3-0206 REV: 3		DATE: 11-11-88 SHEET: C

NEXT ASSY

PROJ FILE NO: 3-0206 DC NO: SCALE: DWG: SCALE: 2/1 DATE: 11-11-88 SHEET: C