

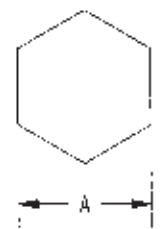
DASH NO	CABLES ACCOMMODATED	A HEX	B DIM	C MAX	ASSEMBLY PER
-20	MI 17-15 00007				
-202	TWC-78-				
-203	TWC-124 1A				
-204	8502, RAYC M				
-205	TWC-78-F2				
-206	187600120, RAYCHEM			1.80	TAI-65
-207	83310, BELDEN				
-208	202-3827, M CRODDOT				
-209	202-3842, M.C. CRODDOT				
-210	8451, BELDEN				
-211	232-3834, MICRODOT				
-212	25241014, RAYCHEM	.344	.033		
-213	TWC-78-2				
-214	WC 124 F			.55	TAI-138
-215	BL982, TIMES				
-216	BL1242, TIMES				
-217	GC8751M24F, GRIMMAN				
-218	EDP221888, RAYCHEM				
-219	25260114, RAYCHEM				
-220	GC8753P1, GRIMMAN			1.80	TAI-166
-221	10614, RAYCHEM				
-222	10613, RAYCHEM				
-223	FW52-1149, HUGHES				

DATA CONTAINED IN THIS DOCUMENT IS PROPRIETARY TO TROMPETER RF CONNECTIVITY AND SHALL NOT BE REPRODUCED, COPIED OR USED FOR PURCHASE OF ANY PRODUCT WITHOUT EXPRESS WRITTEN PERMISSION.

REV	DESCRIPTIONS
P	REVISED PER ECO # 15553

DATE	APPROVED
2/13/08	<i>Matt</i>

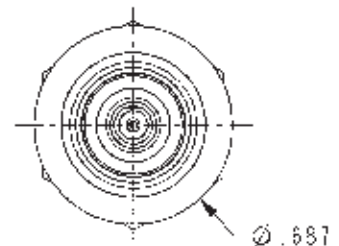
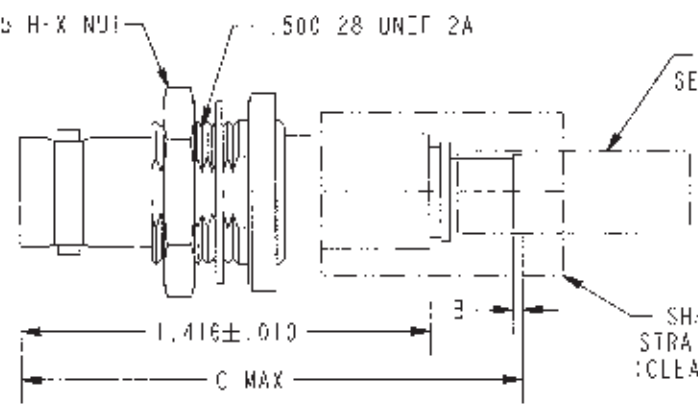
DASH NO	CABLES ACCOMMODATED	A HEX	B DIM	C MAX	ASSEMBLY PER
-301	GC8756C1, GRIMMAN				
-302	GC8756E1, GRIMMAN				
-303	152843514 RAYCHEM				TAI-165
-304					
-305	M 7117T-00301, THERMATICS	.344	.033	1.80	
-306	TRC-50-2 M7134-00032				TAI-218
-307	TRC-75-1				TAI-68
-308	TRC-75-2				TAI-218
-309	TRC-50				TAI-68



RECOMMENDED HEX CRIMP SCALE 2/1



SCALE 1/1



SCALE 2/1

5. EXAMPLE OF COMPLETE MODEL NUMBER:

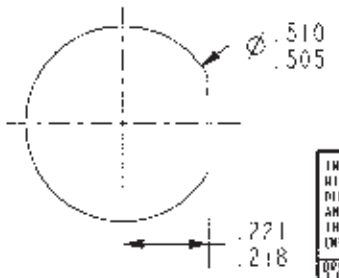
BJ79CTL 201

BASIC MODEL NO. — CABLE GROUP DASH NO.

-202 SHOWS

SHRINKABLE STRAIN RELIEF AND/OR SHRINKABLE SEALING SLEEVE SUPPLIED LOOSE AS FOLLOWS:

- a. CABLE GROUPS -201 THROUGH -210, -217 THROUGH -303, -305, -307, & -309
- 1 SHRINKABLE STRAIN RELIEF (1.00 LONG)
- SHRINKABLE SEALING SLEEVE (1.25 LONG)
- b. CABLE GROUPS -211 THROUGH -216 AND -305 & -308
- 1 SHRINKABLE STRAIN RELIEF (1.75 LONG)



RECOMMENDED PANEL CUTOUT SCALE 2/1

- 3. MAX NUT PANEL THICKNESS .109
- 2. FINISH: TFS- A (NICKEL)
- 1. 2-LUG CONCENTRIC TWIAX/TRIAX TR5, FULL CRIMP BULKHEAD MOUNT CABLE RECEPTACLE

NOTES: UNLESS OTHERWISE SPECIFIED.

<b>TROMPETER</b> <b>RF connectivity</b> <small>a cinch connectivity solutions brand</small>	
INTERPRET DRAWING PER MIL-STD-100 DIMENSIONS ARE IN INCHES AND THIRDS FINISH THICKNESS (UNLESS OTHERWISE SPECIFIED)	DR. DESIGN SPEC FILE EX = .02 XXX = .010 ANGLE = 1°
DATE: 12-12-07 BY: J. CARPENTER CHK: M.J. QUILTY:	MATERIAL: _____ TITLE: BJ79CTL
APPROVED: <i>M</i> 2/13/08	SCALE: A 14949 PART CODE: 3-0206 DATE: 11-11-88
PROJECT FILE NO: 3-0206 DC NO: SCALE DWG: 2/1	SHEET: C