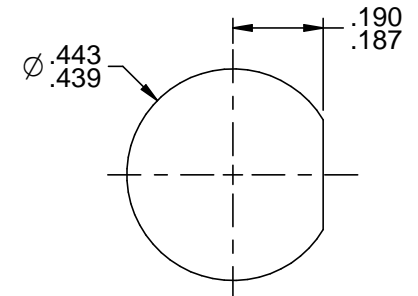
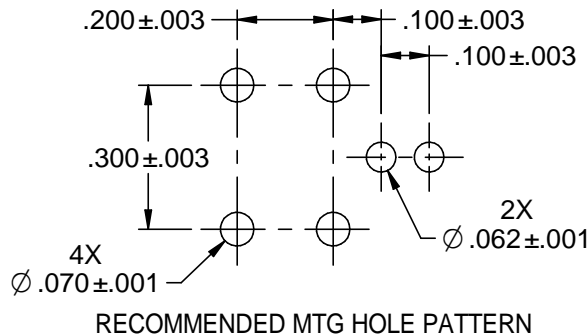


NOTES: UNLESS OTHERWISE SPECIFIED

1. MATERIALS AND FINISH
 - 1.1 BODY: TIN PLATED BRASS
 - 1.2 OUTER INSULATOR: PTFE (TEFLON)
 - 1.3 INTERMEDIATE CONTACT: GOLD PLATED BRASS
 - 1.4 DIELECTRIC: PTFE (TEFLON)
 - 1.5 CENTER CONTACT: GOLD PLATED BERYLLIUM COPPER
 - 1.6 MOUNTING HARDWARE: TIN PLATED COPPER ALLOY
 - 1.7 GASKET: SILICONE RUBBER

2. ELECTRICAL:
 - 2.1 IMPEDANCE: NON-CONSISTANT
 - 2.2 FREQUENCY (MAX): 500 MHZ
3. PANEL NUT TORQUE (MAX): 30 INCH POUNDS
4. PANEL THICKNESS (MAX): .125



RECOMMENDED PANEL CUTOUT

<p>EMERSON Network Power Connectivity Solutions</p> <p><small>This PROPRIETARY document is property of Emerson Network Power. Connectivity Solutions. It is confidential in nature, non-transferable, and issued with the clear understanding that it is not tracked or copied without permission and is retrievable upon demand.</small></p> <p><small>INTERPRET DRAWING IN ACCORDANCE WITH ASME Y14.5-2009.</small></p>	<p>3RD ANGLE PROJECTION</p>	<h2>Trompeter</h2>	
	<p>RoHS2 <input checked="" type="checkbox"/></p> <p>2011/65/EU</p>	<p>Title: TRS, RIGHT ANGLE, BULKHEAD CIRCUT BOARD JACK</p>	
<p>UNLESS OTHERWISE SPECIFIED UNITS: INCH</p> <p>.XX ±.02</p> <p>.XXX ±.005</p> <p>ANGLES ±2°</p>		<p>Model No. CBBJR159FL</p>	
<p>Size A</p>	<p>DO NOT SCALE DRAWING</p>	<p>Date: 7/29/2014</p>	<p>Sheet 1 of 1</p>