

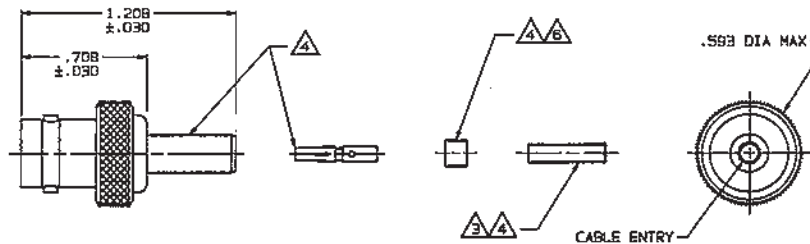
# RED INDICATES ORIGINAL

DASH NO	CABLES ACCOMMODATED	A HEX	ASSEMBLE PER
-001	RG-178, -198	.178	TAI-A118
-002	HEWLETT-PACKARD 8120-1107	.107	
-003	RG-174, -198, -318	.178	
-004	RG-178, -197	.178	
-005	MIL 17.084	.178	
-006	GRUMMAN-GC8750P1 DBL-SHLD RG-188	.197	
-007	275-3881 MICROBROT	.178	
-008	RG-195, -180 421-111 ESSEX	.178	
-009	8218 BELDEN YR23023 BELDEN 21-597 ESSEX	.178	
-010	RG-122	.213	
-011	RG-58, -141, -303 21-837 ESSEX	.213	
-012	RG-55, -142, -223 RG-400	.255	
-013	RG-59	.255	
-013A	TCC-75-2	.255	
-013B	RG-62	.255	
-014	8212 BELDEN	.290	
-015	730A AT&T	.290	
-015A	RG-71	.290	
-018	724 AT&T 8281 BELDEN	.324	
-017	RG-8	.344	
-018	8268 BELDEN	.255	
-019	8278 BELDEN	.290	
-020	8248 BELDEN	.290	
-021	88240 BELDEN	.213	
-022	88241, 88269 BELDEN	.255	
-023	89108 BELDEN	.290	
-024	89120 BELDEN	.290	
-025	734A, AT&T	.255	
-026	735A, AT&T	.178	
-027	KS19224L2, AT&T	.178	

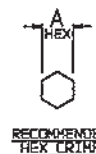
ENV SIZE  
C

DATA CONTAINED IN THIS DOCUMENT IS PROPRIETARY TO TROMPETER ELECTRONICS INC. AND SHALL NOT BE DISCLOSED, COPIED OR USED FOR REPRODUCTION OR MANUFACTURE WITHOUT EXPRESS WRITTEN PERMISSION.

REVISIONS			1-0443	SH 1	
REV	ED	DESCRIPTION	OWN	APPROVED	DATE
T	10493	DELETED -028 CABLE GROUP; ADDED ITEM 39; SEE ECO	DKC	BM; FO	4/8/94



-001 SHOWN



⚠ FOR CABLE GROUP -011 SUPPLY 1 EA ACC011; FOR CABLE GROUPS -013, -013A & -013B SUPPLY 1 EA ACC013; MAY BE ASSEMBLED TO CABLE/CONNECTOR ASSY USING 3M SCOTCHGRIP NO. 1089 PLASTIC ADHESIVE OR EQUIV

⚠ IF PLASTIC STRAIN RELIEF REQUIRED, ADD SUFFIX "BT" TO MODEL NO. (ONLY AVAILABLE WITH -011, -013, -013A & -013B)

⚠ CONTACT SUPPORT BUSHING REQUIRED ON -013B, -015A & -022 ONLY

5. RF COAXIAL BNC FULL CRIMP CABLE RECEPTACLE (EQUIV MIL-CAT "D")

⚠ CONTACT, SLEEVE, CRIMP SLEEVE & CONTACT SUPPORT BUSHING ARE SUPPLIED LOOSE

⚠ SLEEVE REQUIRED ON -001 THRU -007 & -027 ONLY

2. FINISH: TFS-1A (NICKEL)

1. ALL DIM ARE IN INCHES

INCH	MM
.005	0.13
.030	0.76
.178	4.52
.197	5.00
.213	5.41
.255	6.48
.290	7.37
.324	8.23
.344	8.73
.593	15.06
.708	17.98
1.208	30.68

QTY	DESCRIPTION	PART NUMBER	ITEM
TOL. UNLESS SPECIFIED .04 ± MAX ± .005 .0000 ANGLES	<b>TROMPETER</b> RF connectivity	CJ220	
DWN DKC 3-18-94	MATERIAL	CODE IDENT 14949	DRAWING NO. 1-0443
CHK BM 4-6-94	ENGR	APPR FO 4/8/94	REV T
105-1085	NEXT ASSY	SCALE 1/2	DATE 2/3/77 SHEET 1 OF 2