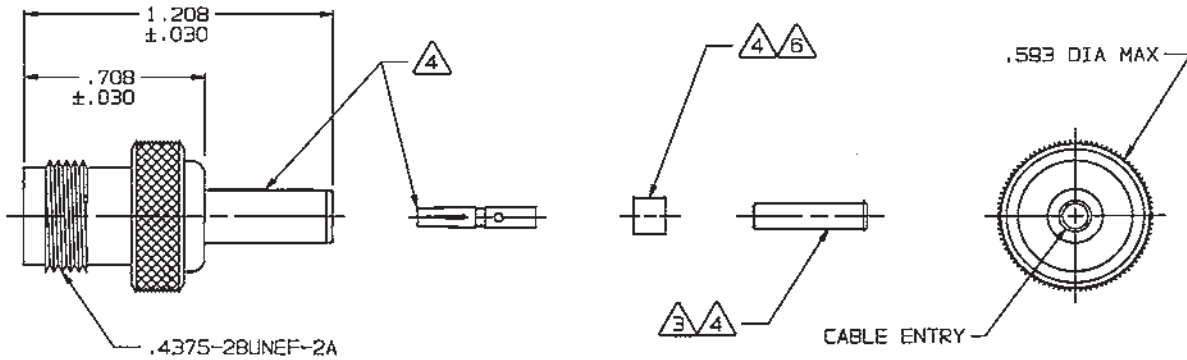


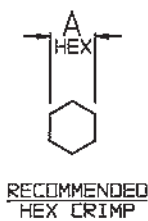
RED INDICATES ORIGINAL

DASH NO	CABLES ACCOMMODATED	A HEX	ASSEMBLE PER	DWG SIZE B	DATA CONTAINED IN THIS DOCUMENT IS PROPRIETARY TO TROMPETER ELECTRONICS INC. AND SHALL NOT BE DISCLOSED, COPIED OR USED FOR PROCUREMENT OR MANUFACTURE WITHOUT EXPRESS WRITTEN PERMISSION.	REVISIONS			1-0445		SH 1
						REV	EO	DESCRIPTION	DWN	APPROVED	DATE
-001	RG-178,-196	.178	TAI-A118	B		P	10493	DELETED -028 CABLE GROUP; ADDED ITEM 38; SEE ECD	OKC	<i>DM: Fa</i>	11/8/94
-002	HEWLETT-PACKARD 8120-1107	.197									
-003	RG-174,-188,-316	.178									
-004	RG-179,-187										
-005	MIL 17/094										
-006	GRUMMAN-GC875GP1 DBL-SHLD RG-188	.197									
-007	275-3991 MICRODDT										
-008	RG-195,-180 421-111 ESSEX										
-009	8218 BELDEN YR23023 BELDEN 21-597 ESSEX	.178									
-010	RG-122										
-011	RG-58,-141,-303 21-537 ESSEX	.213									
-012	RG-55,-142,-223 RG-400										
-013	RG-59										
-013A	TCC-75-2										
-013B	RG-62	.255									
-014	8212 BELDEN										
-015	730A AT&T										
-015A	RG-71	.290									
-016	724 AT&T 8281 BELDEN	.324									
-017	RG-6	.344									
-018	9268 BELDEN										
-019	8279 BELDEN	.255									
-020	9248 BELDEN	.290									
-021	89240 BELDEN	.213									
-022	88241,89269 BELDEN	.255									
-023	89108 BELDEN										
-024	89120 BELDEN	.290									
-025	734A,AT&T	.255									
-026	735A,AT&T										
-027	KS19224L2, AT&T	.178									



-001 SHOWN

INCH	MM
.005	0.13
.030	0.76
.178	4.52
.197	5.00
.213	5.41
.255	6.48
.290	7.37
.324	8.23
.344	8.73
.593	15.06
.708	17.98
1.208	30.68



- B** FOR CABLE GROUP -011 SUPPLY 1 EA ACC011; FOR CABLE GROUPS -013, -013A & -013B SUPPLY 1 EA ACC013; MAY BE ASSEMBLED TO CABLE/CONNECTOR ASSY USING 3M SCOTCHGRIP NO. 1099 PLASTIC ADHESIVE OR EQUIV
- 7** IF PLASTIC STRAIN RELIEF REQUIRED, ADD SUFFIX "BT" TO MODEL NO. (ONLY AVAILABLE WITH -011, -013, -013A & -013B)
- B**

- 4** CONTACT, SLEEVE, CRIMP SLEEVE & CONTACT SUPPORT BUSHING ARE SUPPLIED LOOSE
- 3** SLEEVE REQUIRED ON -001 THRU -007 & -027 ONLY
- 2. FINISH: TFS-1A (NICKEL)
- 1. ALL DIM ARE IN INCHES

- 5** CONTACT SUPPORT BUSHING REQUIRED ON -013B, -015A & -022 ONLY
- 5. RF COAXIAL TNC FULL CRIMP CABLE RECEPTACLE (EQUIV MIL-CAT "D")

QTY	DESCRIPTION	PART NUMBER	ITEM			
TOL UNLESS SPECIFIED .XX ± .XXX ± .005 .XXXX ±	TROMPETER RF connectivity <small>a crimp connectivity solutions brand</small>	CJ240				
DWN OKC 3-18-94 CHK <i>DM</i> 4-6-94 ENGR — —			MATERIAL	CODE IDENT	DRAWING NO.	REV
APPR <i>FR</i> 4/8/94	SCALE 2/1	DATE 2/10/77	SHEET 1 OF 2	14949	1-0445	P

NEXT ASSY