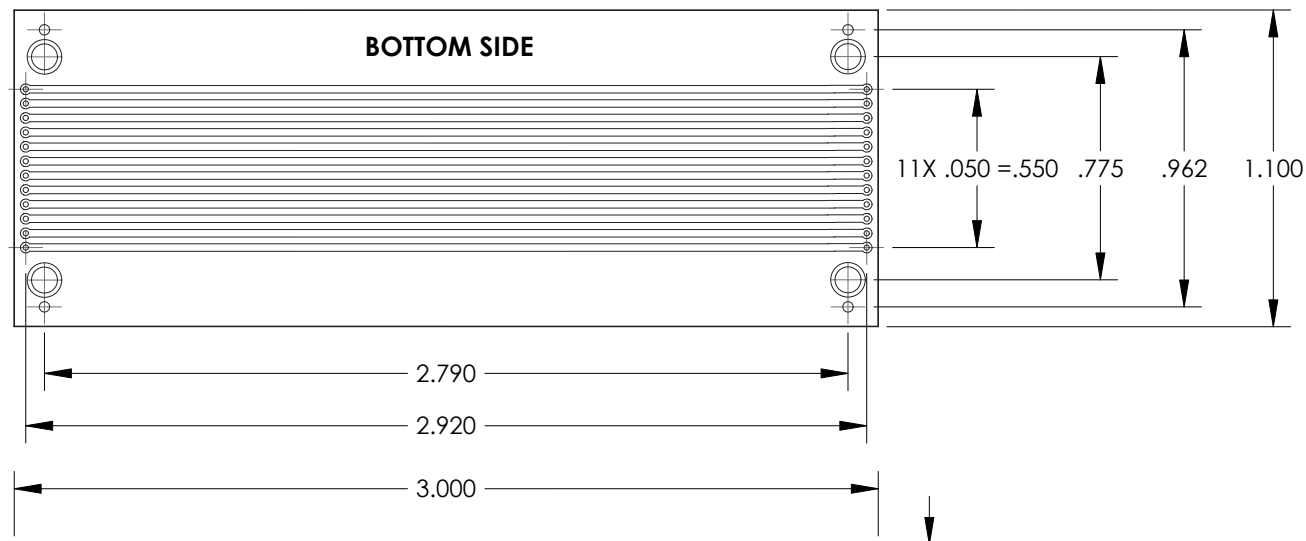


SILK SCREEN - BOTTOM

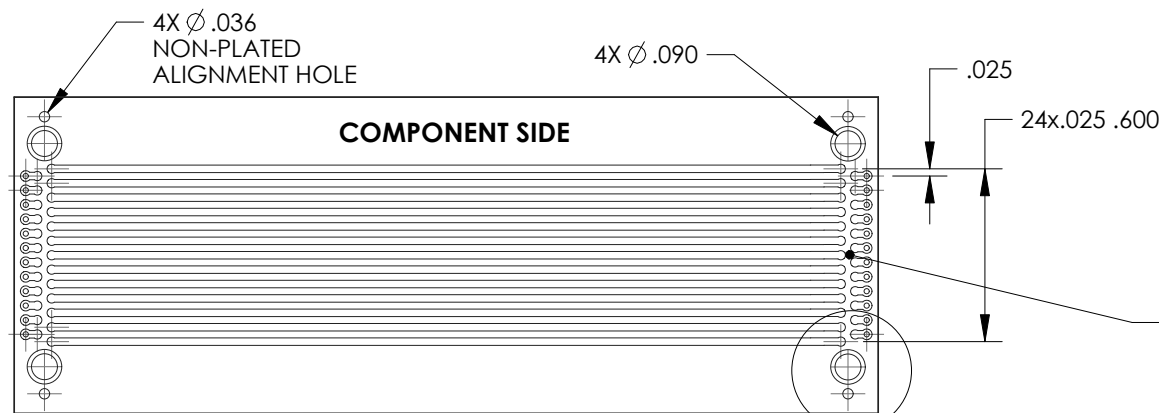


P/N 4631533093

BOTTOM SIDE



COMPONENT SIDE



COMPONENT SIDE FOOTPRINT AREA FOR CINCH: APSE COMPRESSION STACKING CONNECTOR PN: 380 05 20 001

SEE DETAIL A

SILK SCREEN - TOP

Mates to P/N 380 05 20 001 13

Mates to P/N 380 05 20 001 13

NOTES:

1. BOARD FABRICATED PER IPC-A-600D (ACCEPTABILITY OF PRINTED CIRCUITS)
2. MATERIALS: LF0210 COVERLAY / AP9121 CORE
3. THICKNESS: .008 IN
4. FINISH: ENIG
5. SILKSCREEN: WHITE
6. IMPEDANCE: N/A
7. IPC-6013, CLASS 2
8. HOLE DIMENSIONS ARE AFTER PLATING
9. TOLERANCES:
 - LINEAR ±.002
 - RADIAL ±.003
 - HOLES +.003 / -.000

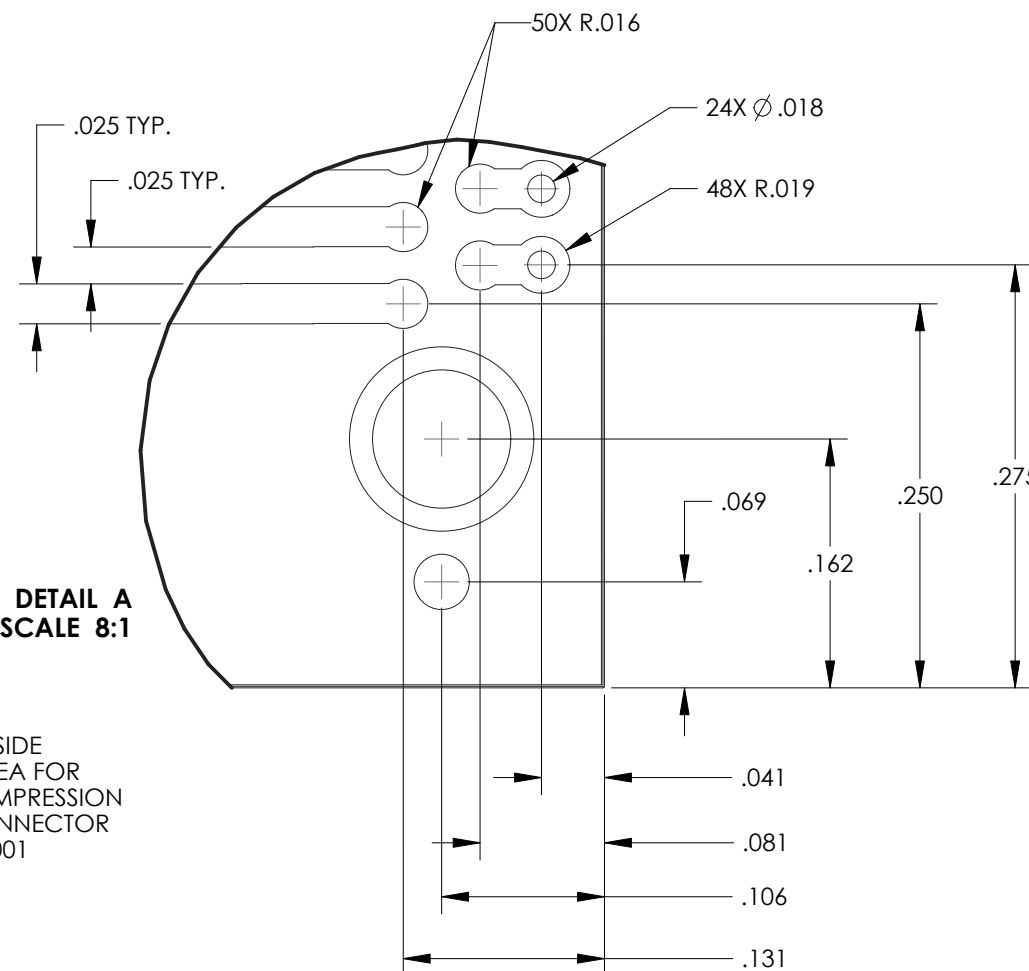
STACKUP

	LF0210 COVERLAY
	COPPER
	POLYIMIDE AP9121 CORE
	COPPER
	LF0210 COVERLAY

DRAWING REVISIONS
(RELEASE DATE ON FILE)

REV	DOCUMENT	APP	APPROVAL DATE
A		AA	07/22/19

DETAIL A
SCALE 8:1



UNITS ENGLISH INCHES		DESIGN ENGINEER C.FUDALA	DATE 7/12/19			1700 FINLEY RD LOMBARD, IL 60148	
DO NOT SCALE DRAWING		PRO/E		TITLE 25-POS FLEX JUMPER		CONTROL SPEC NUMBER	
UNLESS OTHERWISE SPECIFIED: ALL DIMENSIONS ARE IN INCHES				MATERIAL SEE NOTES		PROJECT NUMBER	
FILLET/RADII .02 MAX.		TOLERANCES .X ± .1 .XX ± .01 .XXX ± .005 ANGULAR ± .5°		MATERIAL SPEC NUMBER SEE NOTES		FINISH SEE NOTES	
CONFIDENTIAL THIS DOCUMENT IS THE PROPERTY OF CINCH. NEITHER THIS DOCUMENT NOR ANY OF THE INFORMATION CONTAINED IN IT MAY BE DUPLICATED OR DISCLOSED WITHOUT PRIOR WRITTEN CONSENT OF CINCH. ©COPYRIGHT CINCH				CAD FILE NUMBER 4631533093		DRAWING NUMBER 4631533093	
CAGE IDENT NO.		SIZE		SCALE 3:1		SHEET 1 OF 1	
APPROVALS ON FILE							